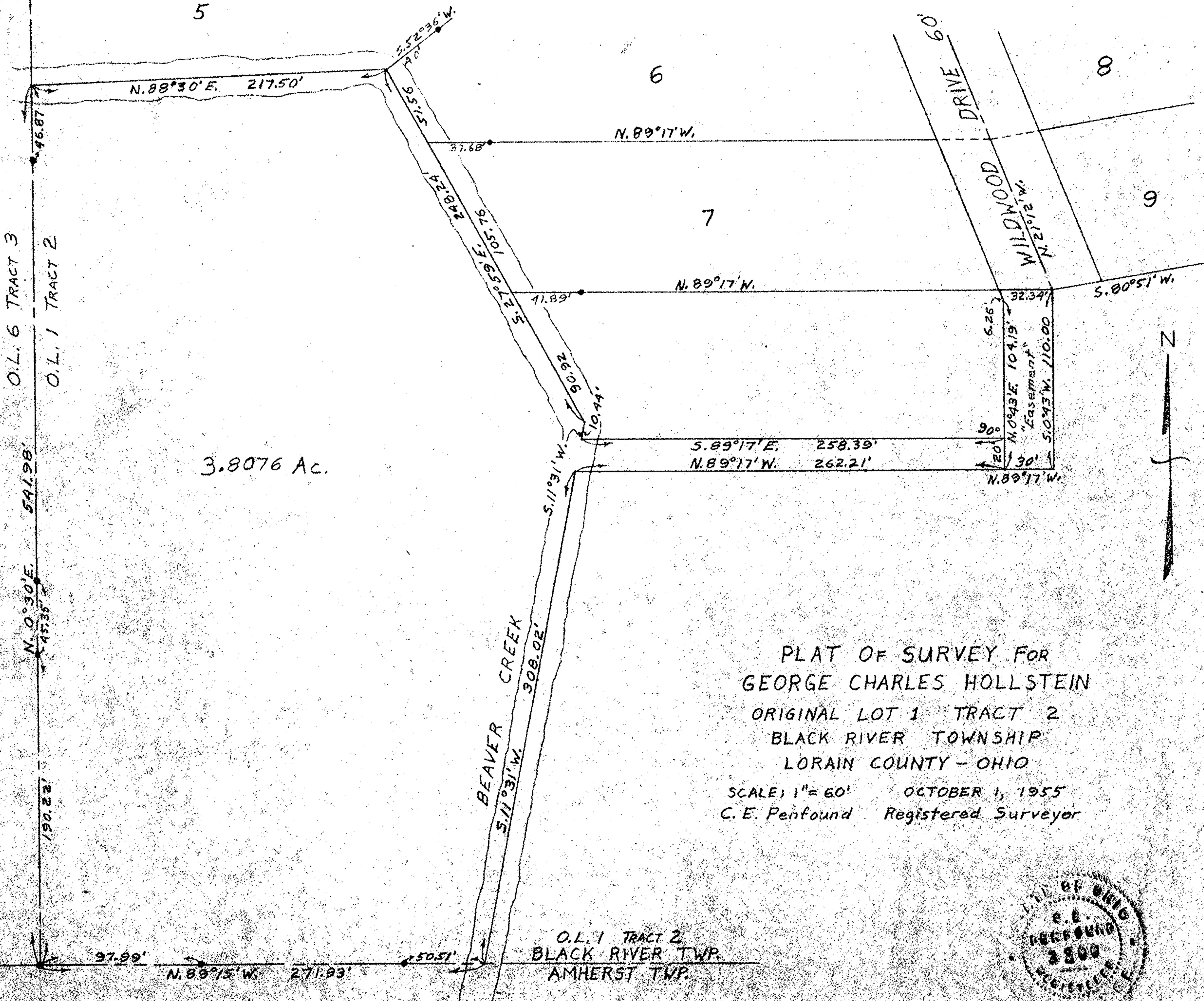


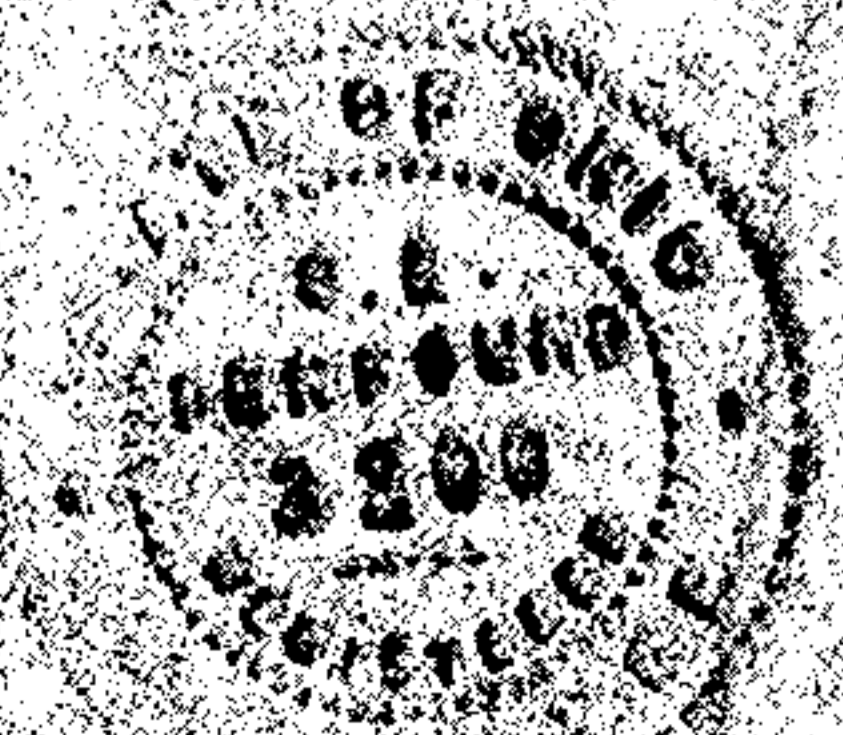
Numbered Lots are part of HOLL-DAR SUB<sup>n</sup>.  
 PLAT RECORD VOL. 15 PG. 74



3.8076 Ac.

PLAT OF SURVEY FOR  
 GEORGE CHARLES HOLLSTEIN  
 ORIGINAL LOT 1 TRACT 2  
 BLACK RIVER TOWNSHIP  
 LORAIN COUNTY - OHIO

SCALE: 1" = 60'      OCTOBER 1, 1955  
 C. E. Penfound      Registered Surveyor



NOTE: Iron pins found shown thus: •