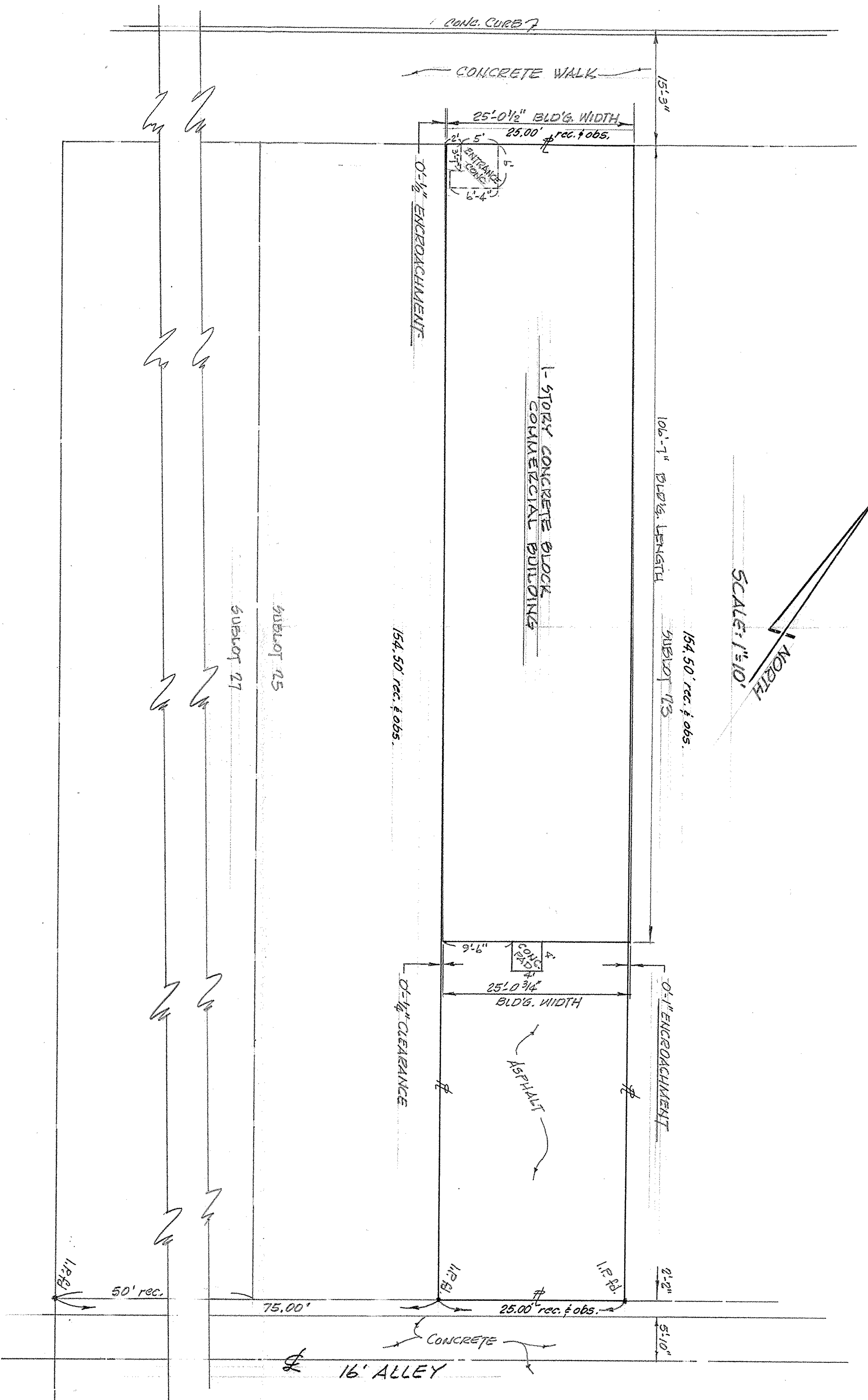


8th STREET - 66'



SCALE: 1"=10'



REID AVENUE - 66'

MAP of SURVEY

PREPARED FOR JEAN FENTON FINNELL

PART of SUBLOT 25 in BLOCK No 5 of SELAH CHAMBERLAIN
 TRUSTEE ADDITION of PART of ORIGINAL BLACK RIVER TWP LOT 4, TRACT 1
 CITY of LORAIN, LORAIN COUNTY, OHIO

MEGLINCHY and ASSOCIATES
 PROFESSIONAL ENGINEER and SURVEYORS
 ELYRIA, OHIO
 AUGUST, 1978 # 784036