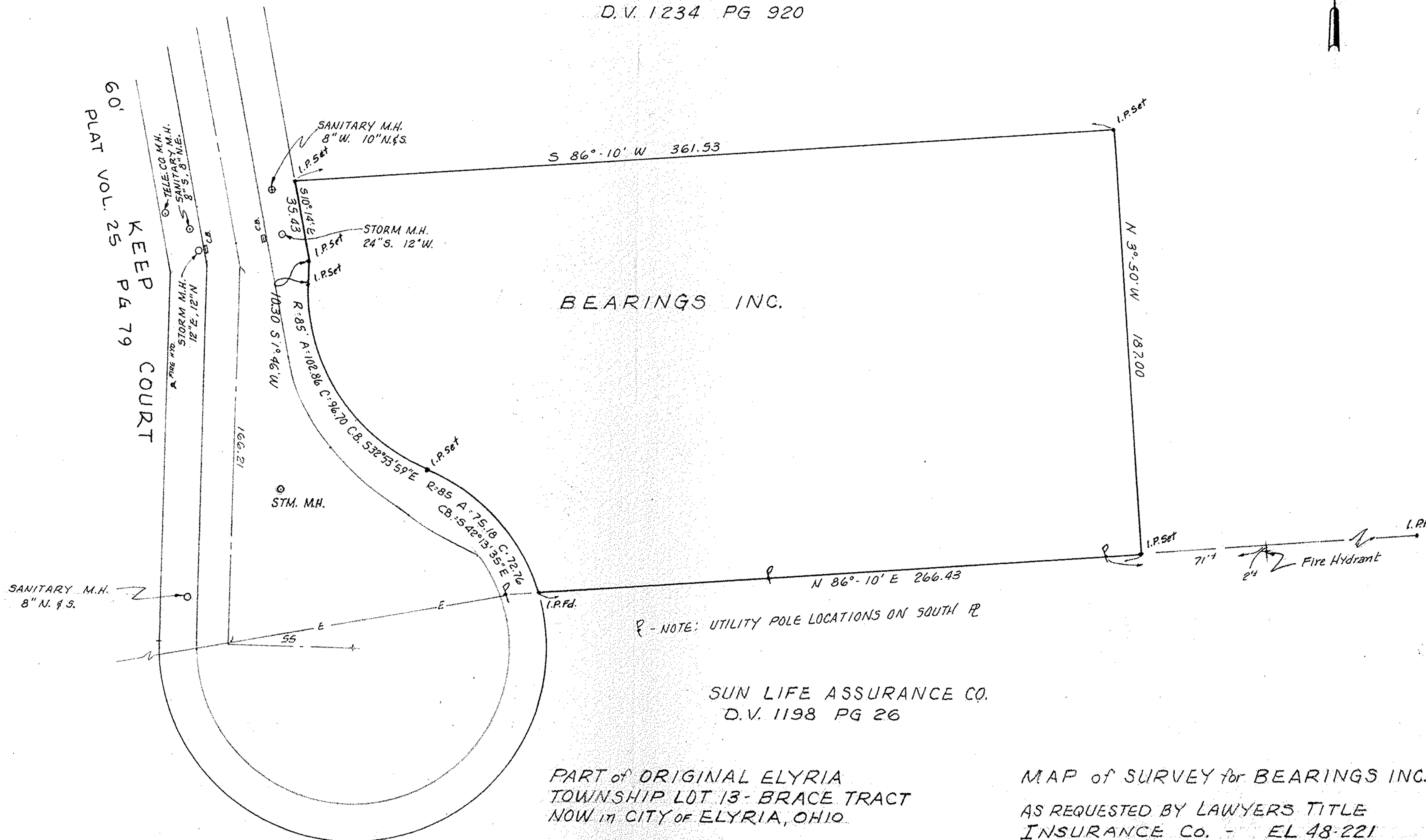


ROBERT P. GRAHAM
D.V. 1234 PG 920

1" = 40'



60'
PLAT VOL. 25
KEEP COURT
PG 79



BEARINGS INC.

SUN LIFE ASSURANCE CO.
D.V. 1198 PG 26

PART of ORIGINAL ELYRIA
TOWNSHIP LOT 13 - BRACE TRACT
NOW in CITY of ELYRIA, OHIO

I.P.Fd. - NOTE: UTILITY POLE LOCATIONS ON SOUTH PL

MAP of SURVEY for BEARINGS INC.
AS REQUESTED BY LAWYERS TITLE
INSURANCE Co. - EL 48-221
BY
McGLINCHY & ASSOCIATES INC.
REGISTERED SURVEYORS & ENGINEERS
SEPT. 1981 816994