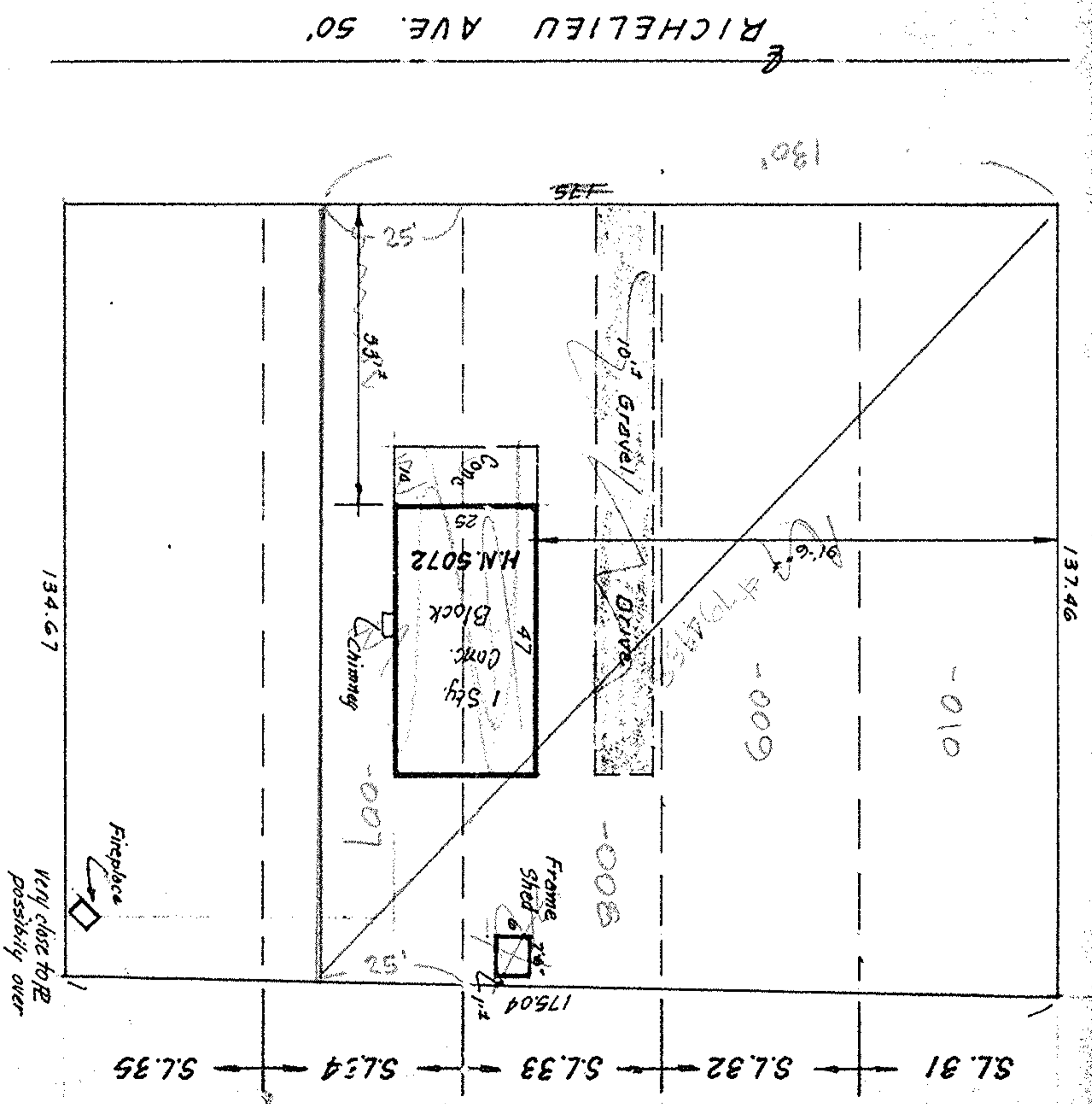




1" = 30'



SUBLOTS # 31, 32, 33, 34 & 35 OF BLOCK 'D'
 OF SHORE SUBDN & BUCKEYE COUNTRY
 CLUB - PLAT VOL. 10, PGS. 30 & 32
 PART OF ORIG. SHEFFIELD TWP. LOT 35
 NOW IN CITY OF SHEFFIELD LAKE, OHIO

McGLINCHY & ASSOCIATES
 FEB. 2, 1977 # 771580

ST # L-7807