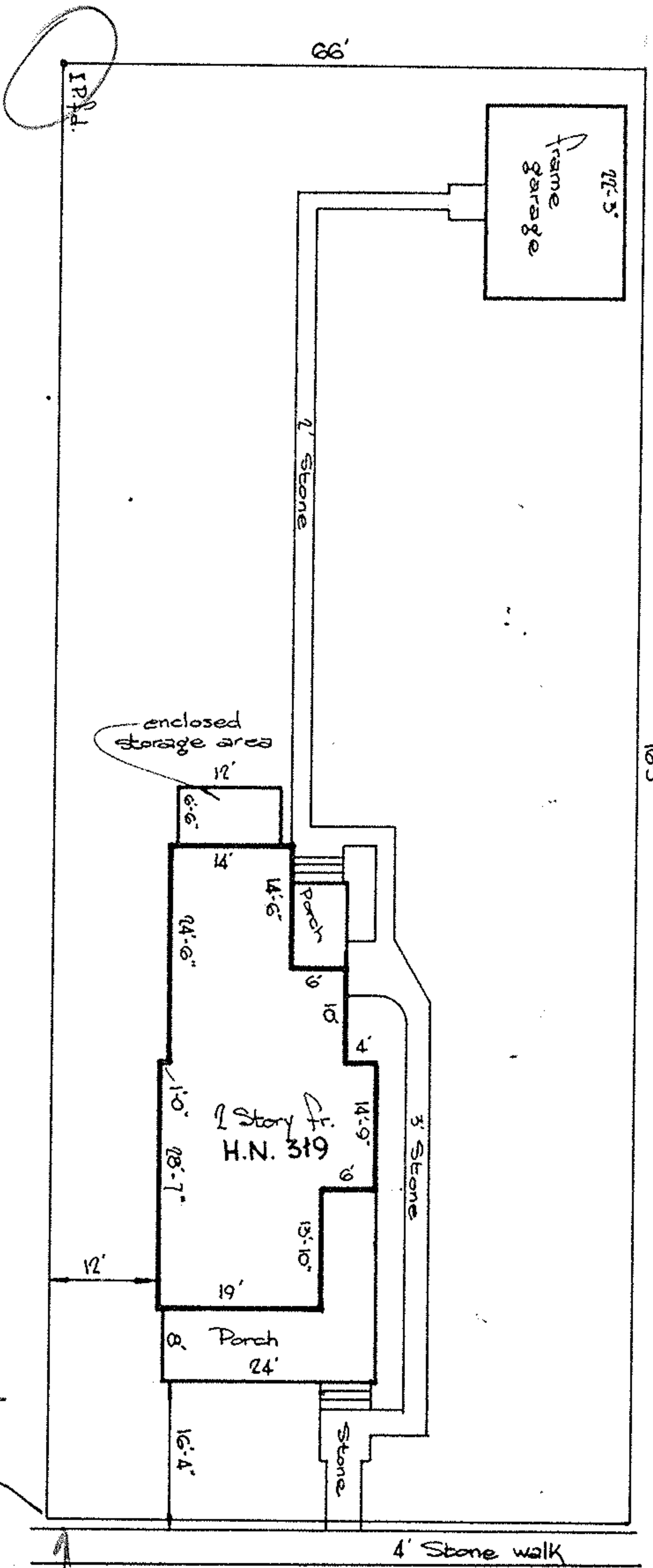


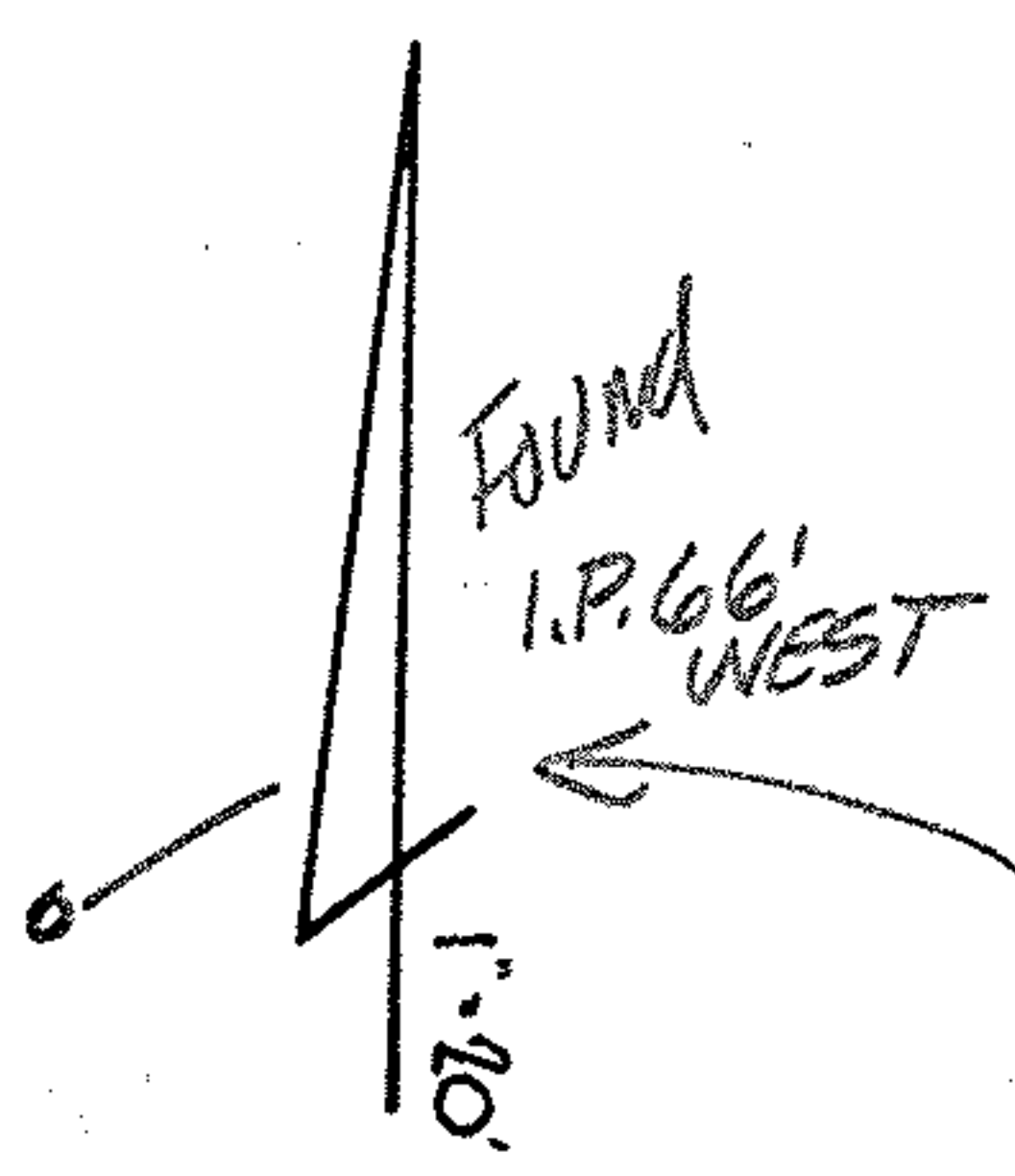
33' Alley



105'

SUBLOT #16 of HEMAN ELY'S SUBDIVISION
 PLAT VOL. 1, Pg. 42 - PART of ORIG. ELYRIA TWP.
 LOTS 18-23 BETWEEN RIVERS
 NOW IN CITY of ELYRIA, OHIO

#325



61'-6" BACK-BACK WALKS

WEST 10th STREET 66'

McGLINCHY and ASSOCIATES
 AUGUST 9, 1976 #761154

EL. 44, 179