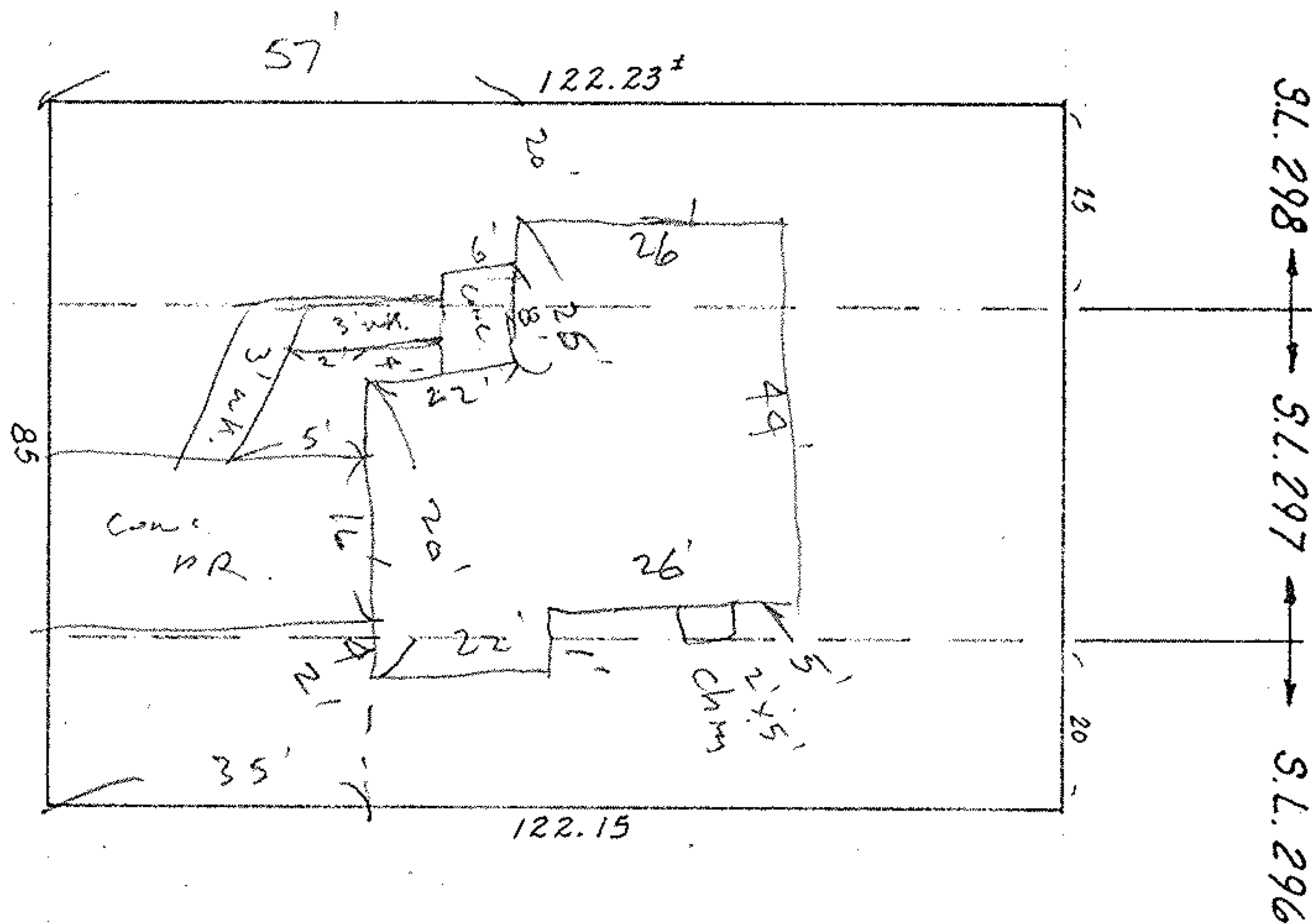


TREADWAY BLVD 50'



SUBLOT #297 plus part of #296 & 298 of
CORAL BEACH SUBDIVISION #2
PLAT VOL. 12 PAGE 21
PART of ORIG. SHEFFIELD TWP. LOT 37
NOW in CITY of SHEFFIELD LAKE, OHIO

McGLINCHY & ASSOCIATES
MAY 4, 1977 #771899