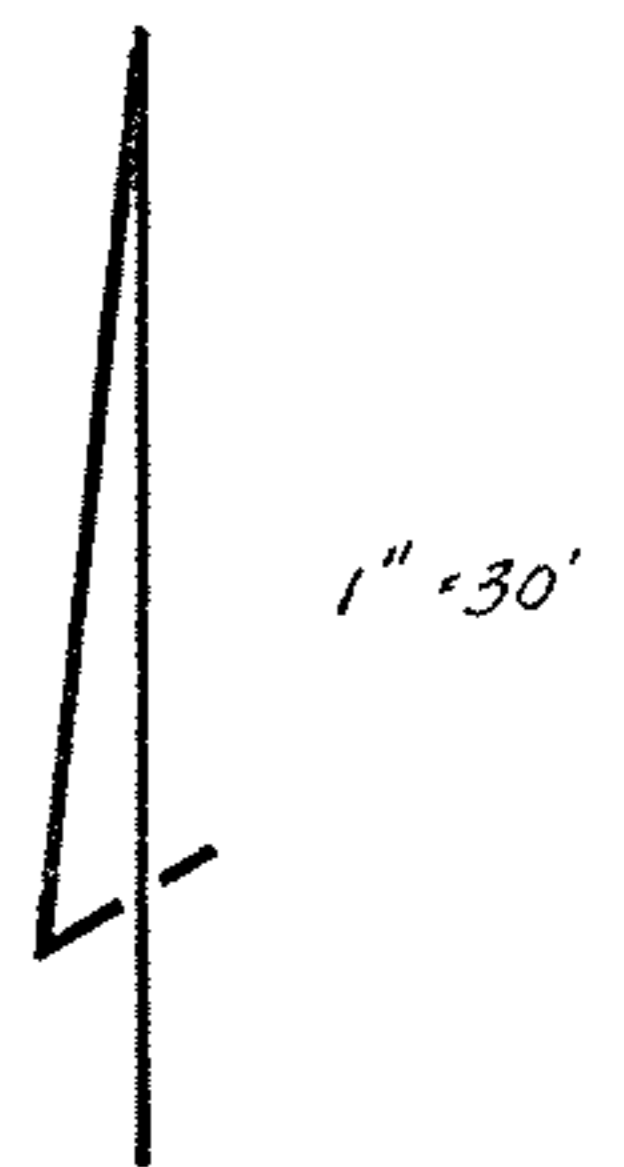
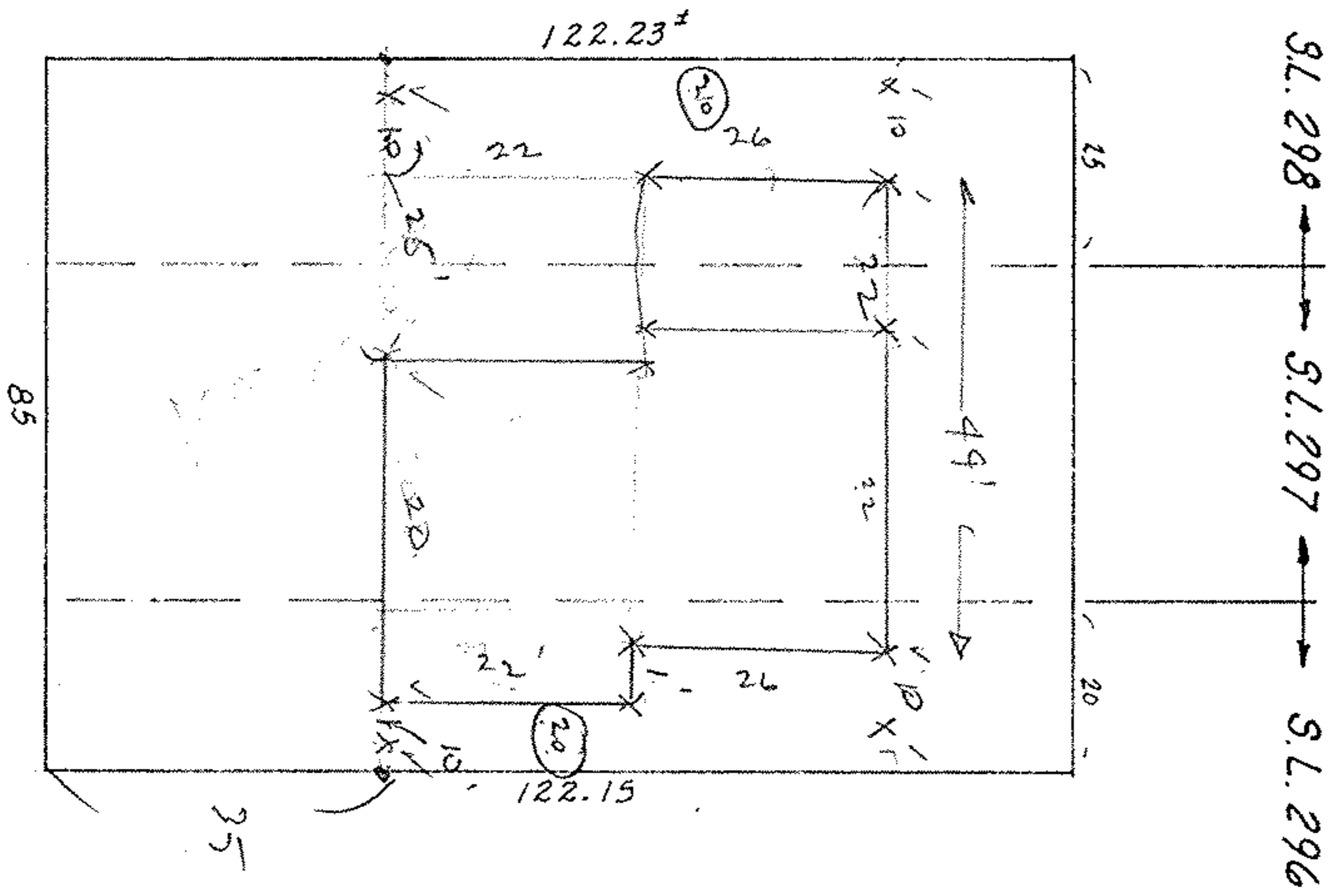


E TREADWAY BLVD 50'



staked  
5/29-77

44  
20  
64

11  
44  
10  
54

SUBLOT #297 plus part of #296 & 298 of  
CORAL BEACH SUBDIVISION #2  
PLAT VOL. 12 PAGE 21  
PART of ORIG. SHEFFIELD TWP. LOT 37  
NOW in CITY of SHEFFIELD LAKE, OHIO

McGLINCHY & ASSOCIATES  
MAY 1977 #771899