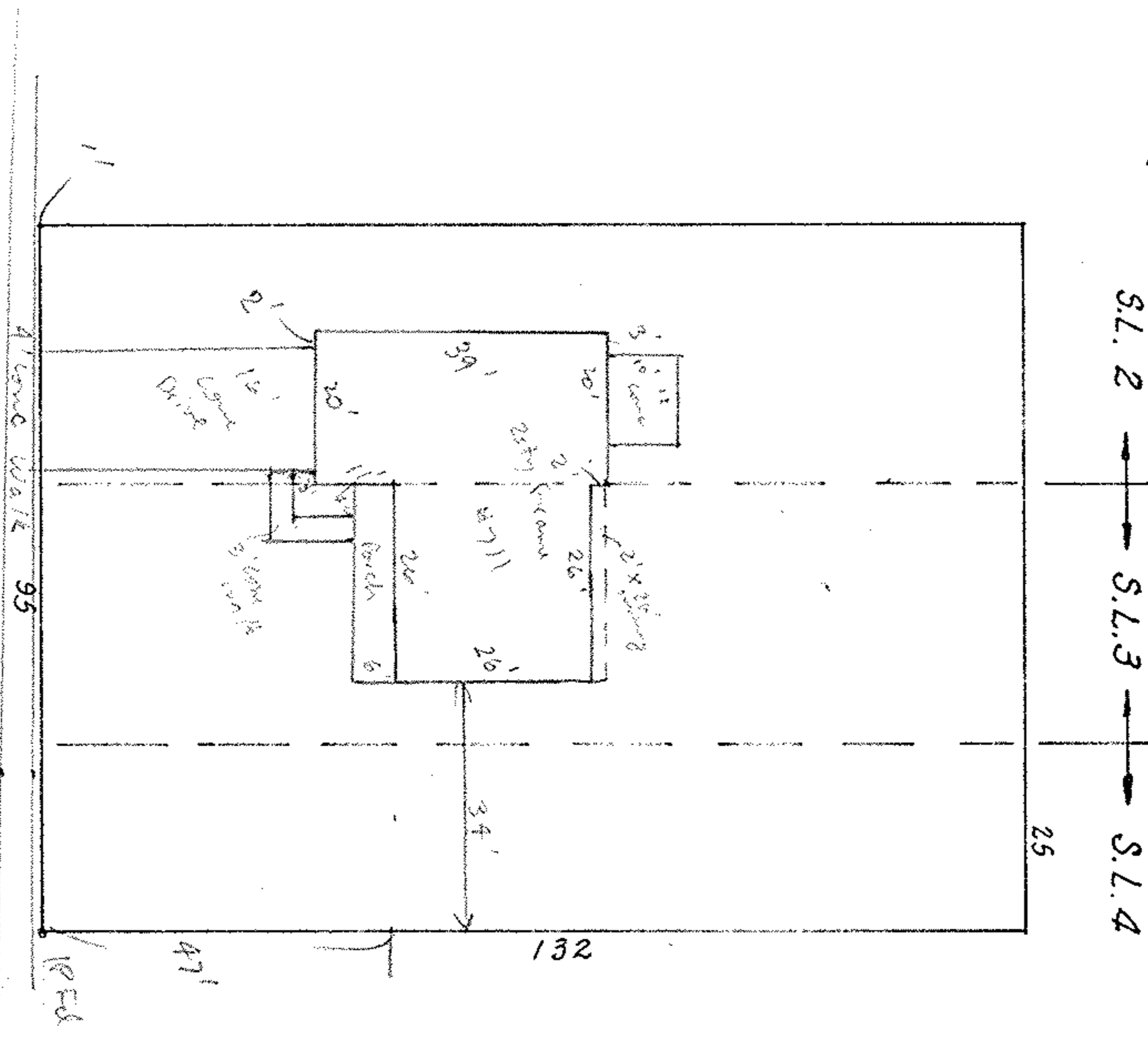


E
LAFAYETTE BLVD 70'



SUBLOTS #2 & 3 plus PART of
SUBLOT #4 of of BLOCK 'E' of CORAL BEACH SUBD'N

PLAT VOL. 11 PAGES 17 & 18
PART of ORIG. SHEFFIELD TWP. LOT 37
NOW in CITY of SHEFFIELD LAKE, OHIO

McGLINCHY & ASSOCIATES
JUNE 1, 1977 #771959 A

MIDT #E-8837