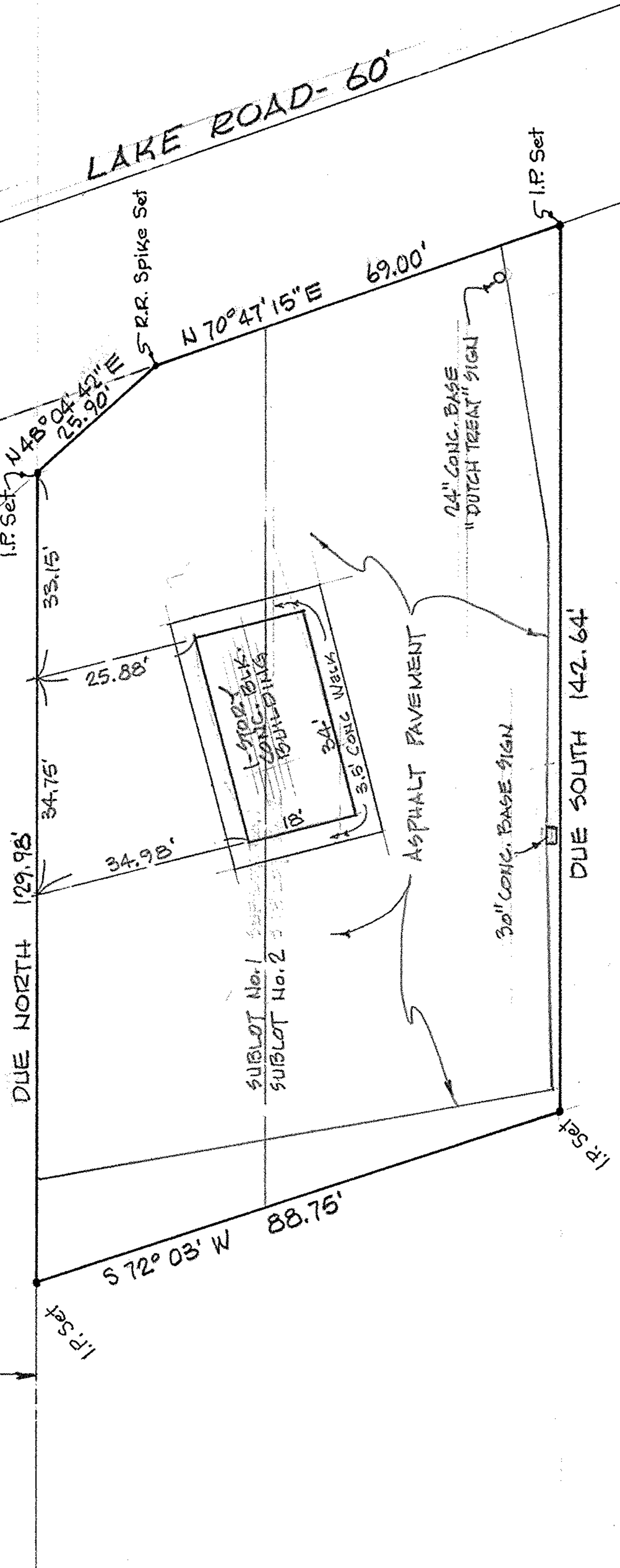
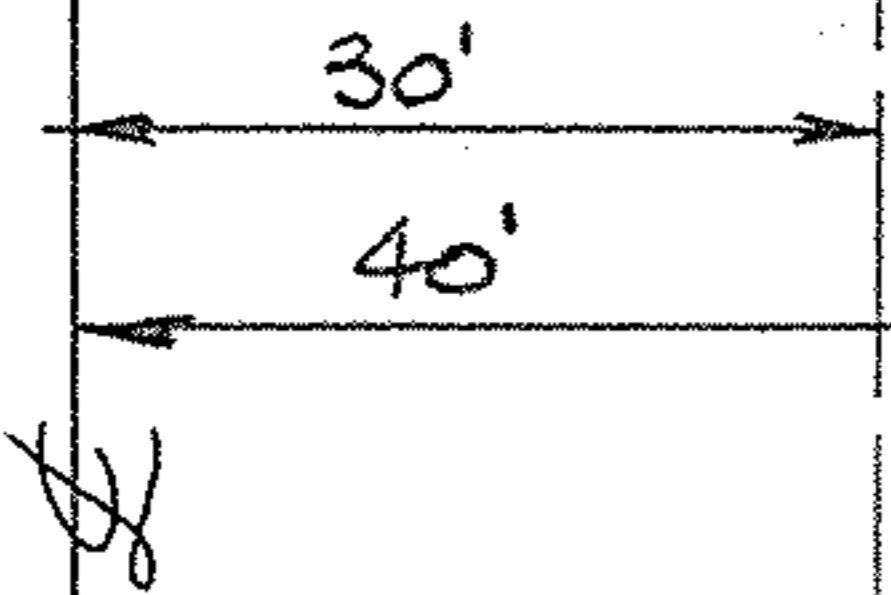


ABBE ROAD



MAP of SURVEY
 PREPARED FOR GEORGE FRAM

PART of SUBLOT No. 1 and ALL of SUBLOT No. 2 in SUNSET
 COUNTRY CLUB ALLOTMENT (BLOCK-B) - PLAT VOL. 11, PG. 6
 CITY of SHEFFIELD LAKE, LORAIN COUNTY, OHIO

McGLINCHY and ASSOCIATES INC.
 PROFESSIONAL ENGINEER and SURVEYORS
 110 1/2 MIDDLE AVE. ELYRIA, OHIO
 NOVEMBER, 1980 # 806553-A