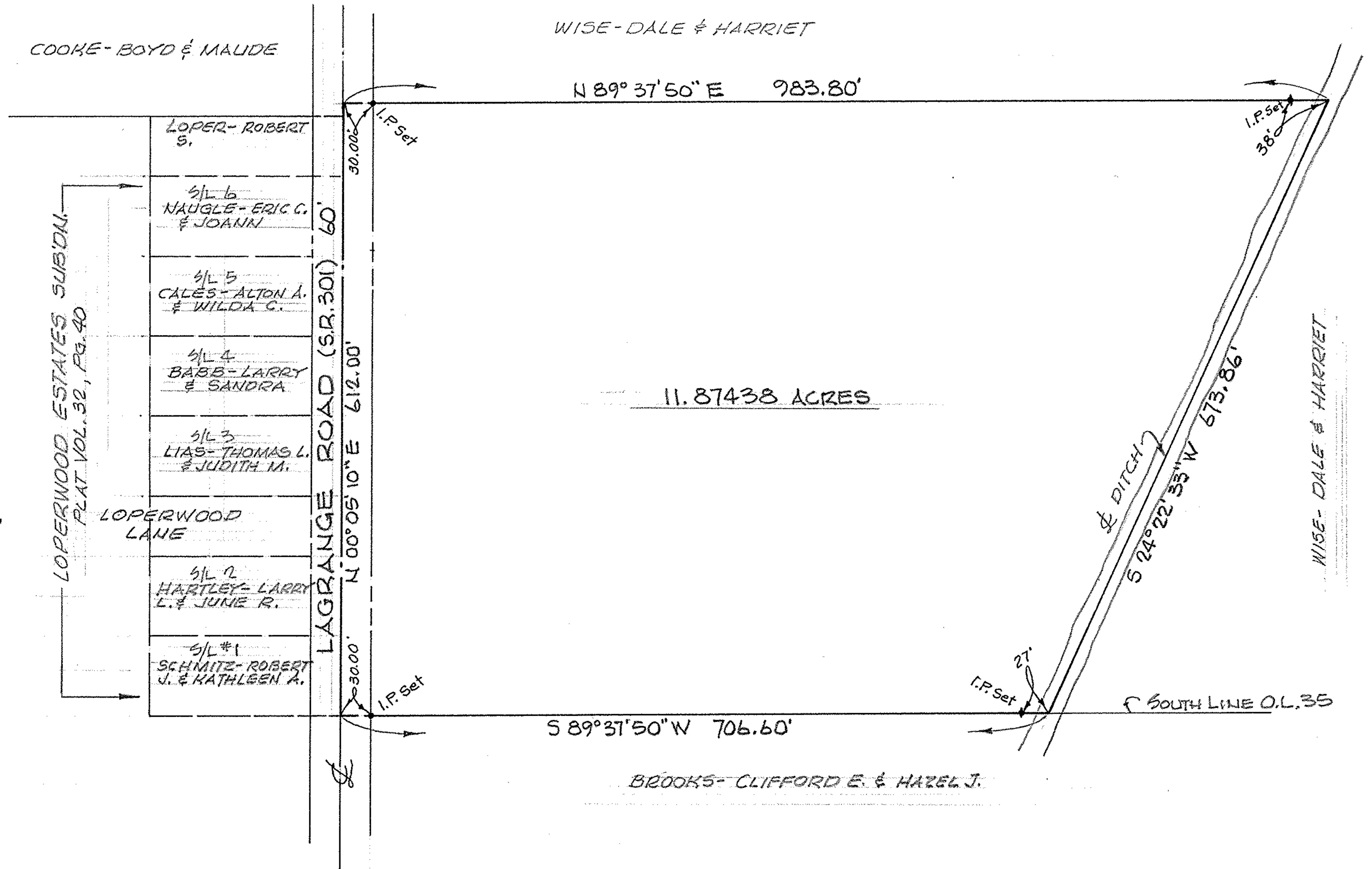


SCALE: 1"=100'



MAP of REQUESTED REZONING
FROM RESIDENTIAL TO COMMERCIAL

PART of ORIGINAL LAGRANGE TWP. LOT No. 35
TOWNSHIP of LAGRANGE, LORAIN COUNTY, OHIO

McGLINCHY and ASSOCIATES INC.
 PROFESSIONAL ENGINEER and SURVEYORS
 110 1/2 MIDDLE AVE. ELYRIA, OHIO
 OCTOBER, 1980 #806510