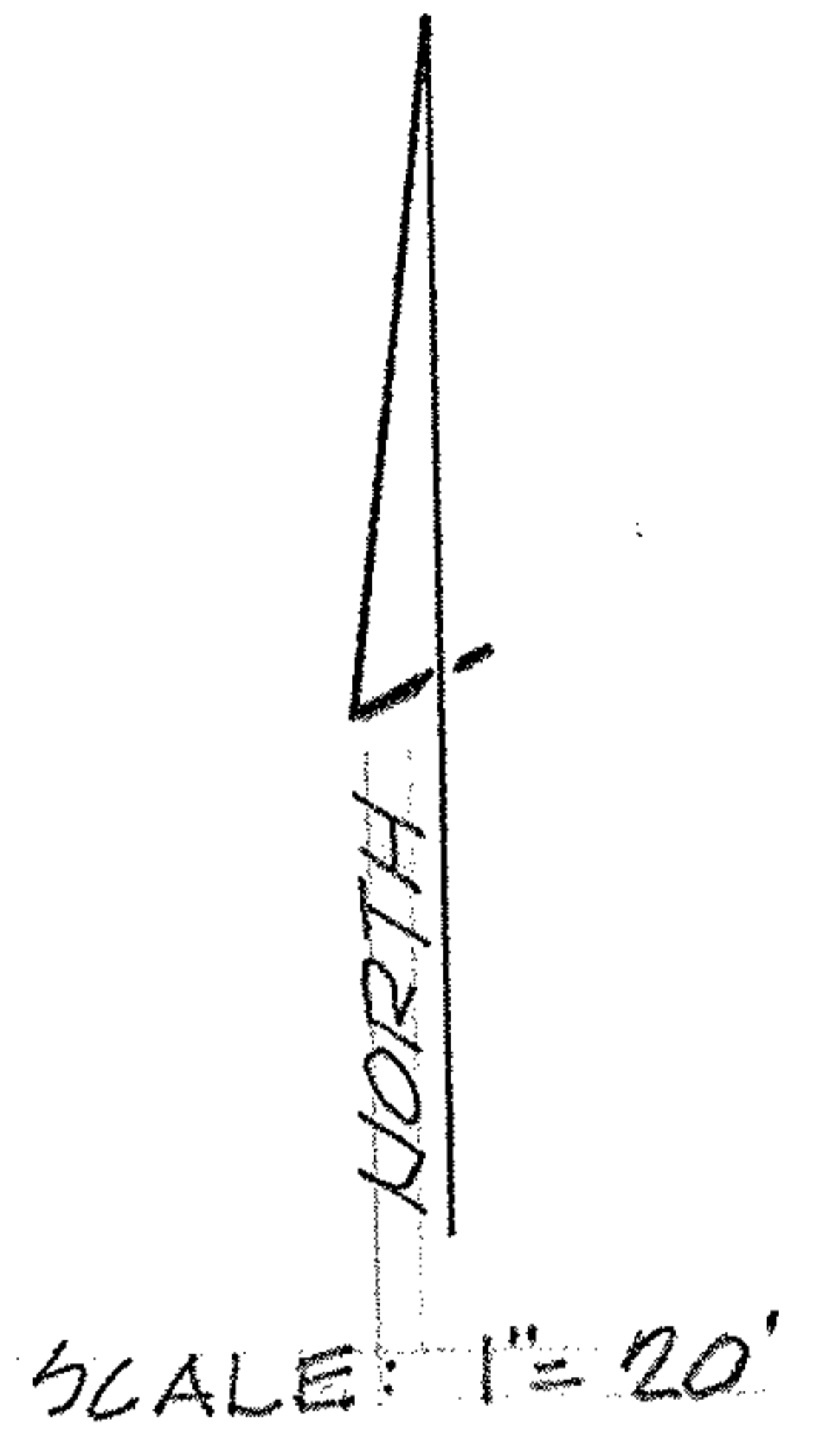
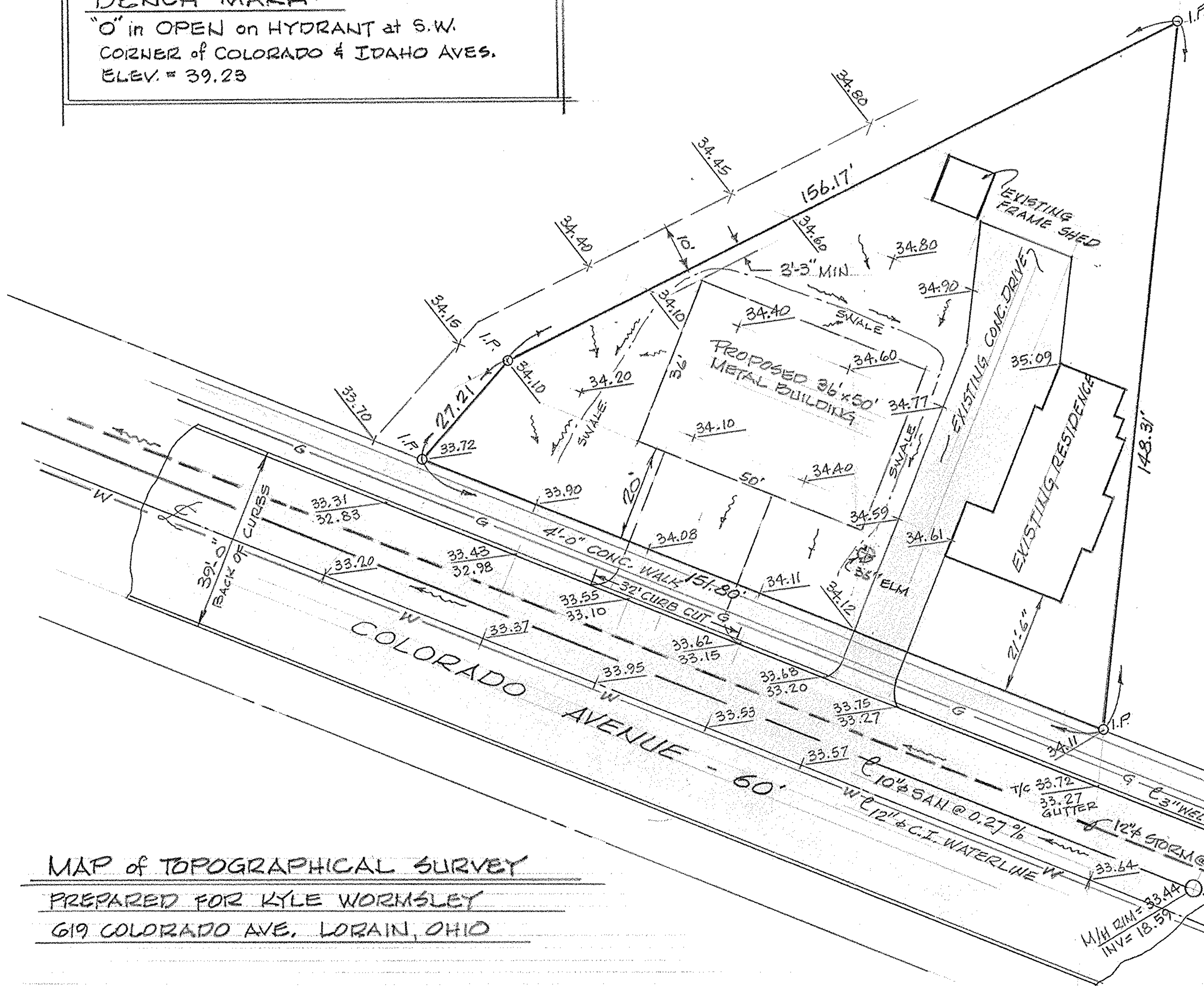


BENCH MARK:

"O" in OPEN on HYDRANT at S.W. CORNER of COLORADO & IDAHO AVES. ELEV. = 39.23



MAP of TOPOGRAPHICAL SURVEY
 PREPARED FOR KYLE WORMSLEY
 619 COLORADO AVE. LORAIN, OHIO

M/H DIM = 33.15
 12" INV. E-W = 29.43
 12" INV. SE = 30.08
 12" INV. NE = 30.08

M/H DIM = 33.44
 INV = 18.57

M/H DIM = 33.72
 33.27
 GUTTER

10" SAN @ 0.27%
 12" C.I. WATERLINE W
 12" STORM @ 0.3%
 3" WELD TR. N.P. GAS LINE

McGLINCHY & ASSOCIATES INC.
 PROFESSIONAL ENGINEER & SURVEYORS
 110 1/2 MIDDLE AVE. ELYRIA, OHIO
 MAY, 1982 # 827222