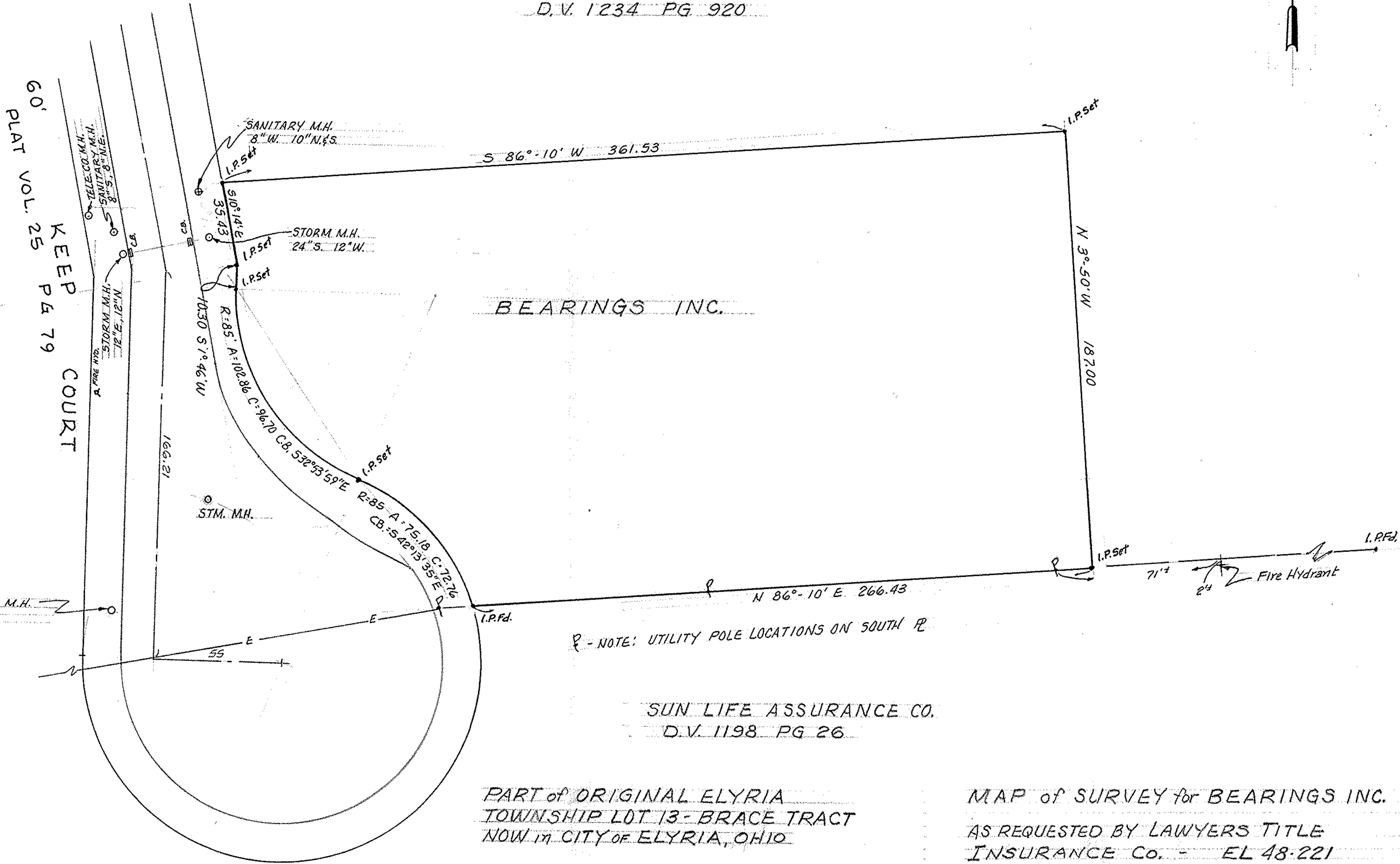


ROBERT P. GRAHAM
D.V. 1234 PG 920

1" = 40'



BEARINGS INC.

NOTE: UTILITY POLE LOCATIONS ON SOUTH PL

SUN LIFE ASSURANCE CO.
D.V. 1198 PG 26

PART of ORIGINAL ELYRIA
TOWNSHIP LOT 13 - BRACE TRACT
NOW IN CITY OF ELYRIA, OHIO

MAP of SURVEY for BEARINGS INC.
AS REQUESTED BY LAWYERS TITLE
INSURANCE Co. - EL 48-221
BY
Mc GLINCHY & ASSOCIATES INC.
REGISTERED SURVEYORS & ENGINEERS
SEPT. 1981 816994