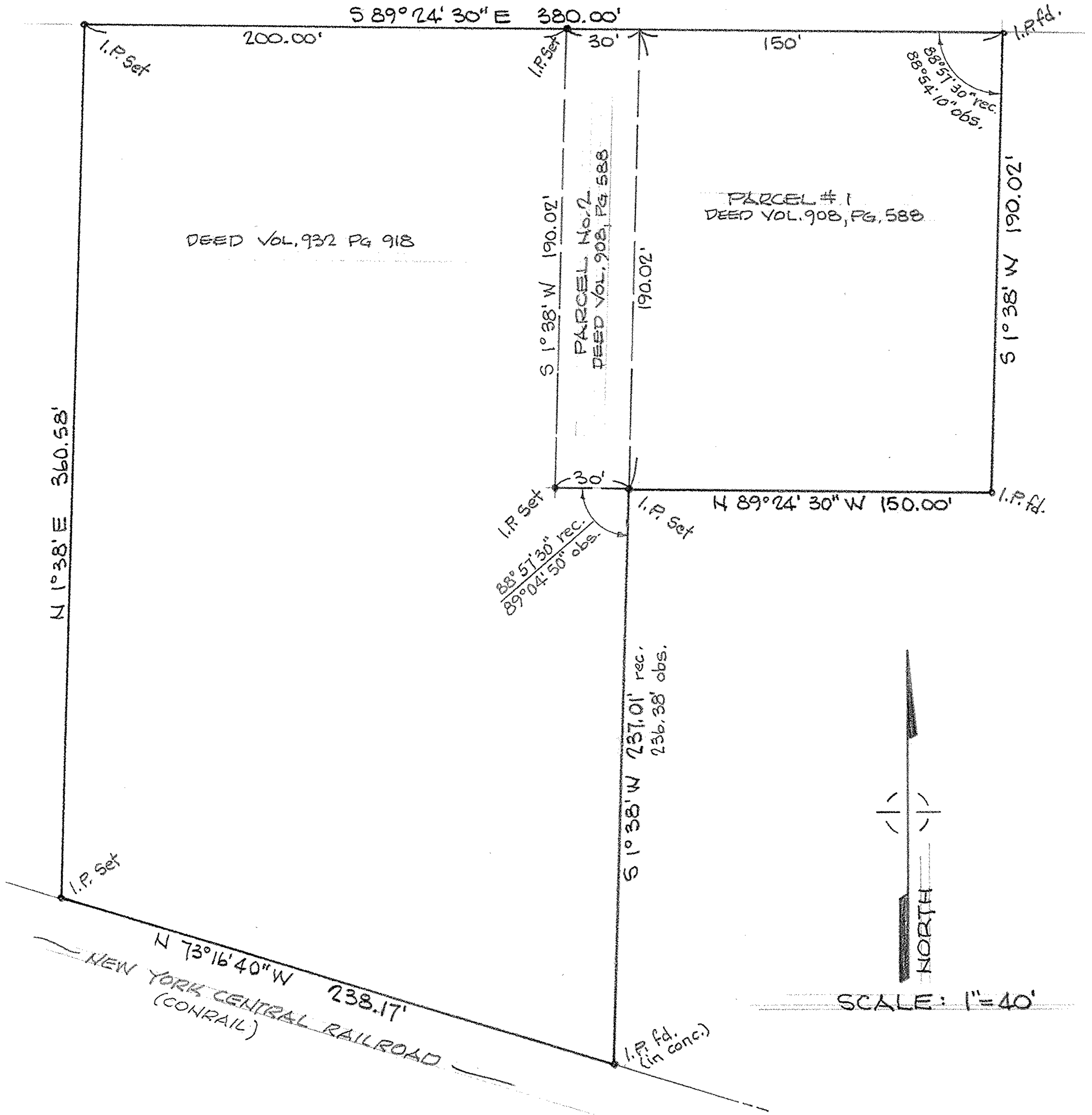


LOWELL STREET - 66' (FKA WEST ST.)



MAP of SURVEY

PREPARED FOR ELYRIA SAVINGS & TRUST NATIONAL BANK  
 PART of ORIGINAL ELYRIA TWP. LOT 12, WEST of BLACK RIVER  
 CITY of ELYRIA, LORAIN COUNTY, OHIO

McCLINCHY and ASSOCIATES INC.  
 PROFESSIONAL ENGINEER & SURVEYORS  
 538 W. BROAD ST. ELYRIA, OHIO  
 JULY, 1979 #795502