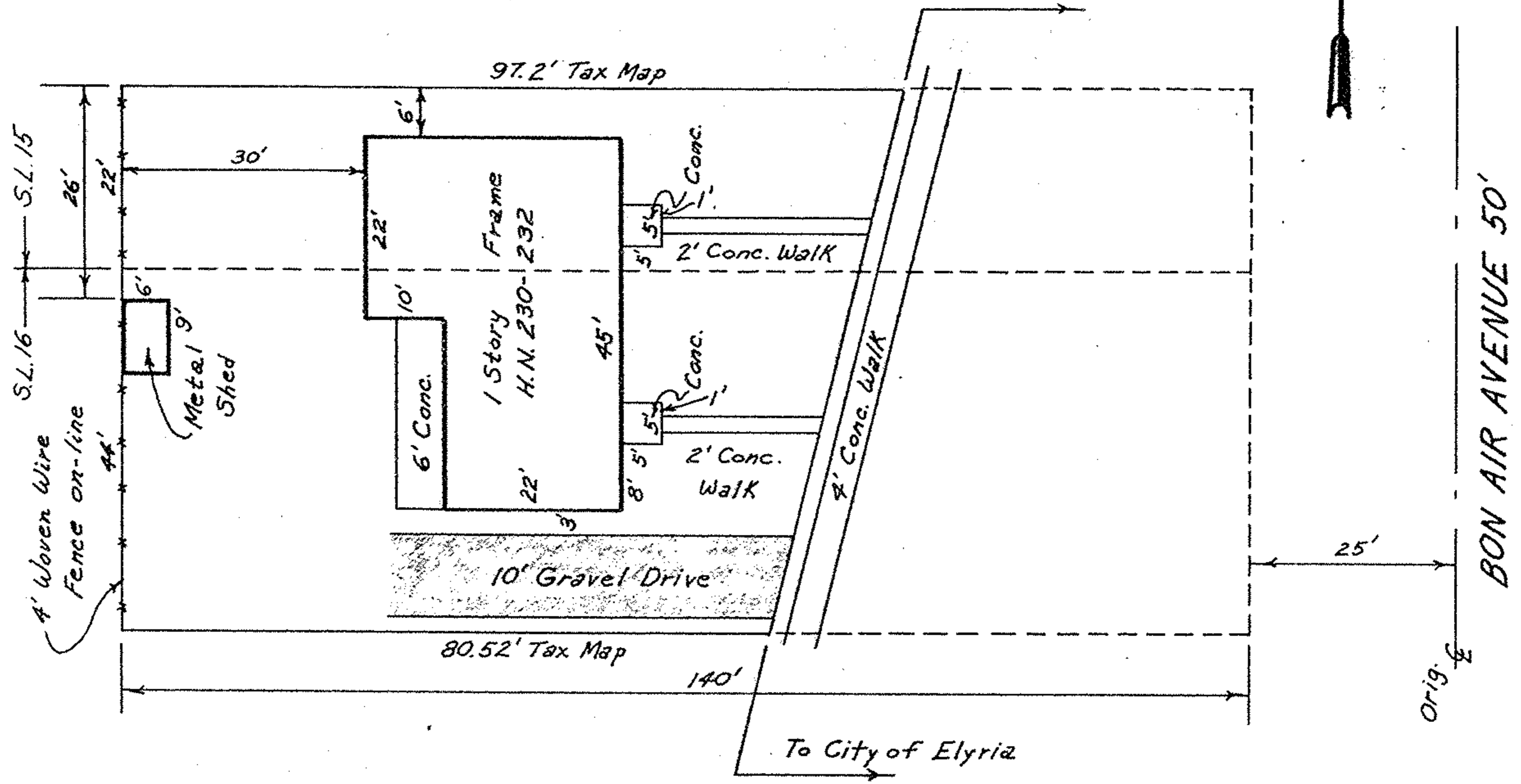


1" = 20'



*Ref*

PART OF SUBLLOT #15 AND ALL OF SUBLLOT #16 of BLOCK 1 OF CITY FARMS ALLOTMENT

PLAT VOL. 9 PAGE 3  
PART of ORIG. ELYRIA  
NOW in CITY of ELYRIA

TWP. LOT 22 EAST OF BLACK RIVER  
, OHIO

McGLINCHY & ASSOCIATES

OCT. 10, 1977  
SEAWAY L-8166

#772660