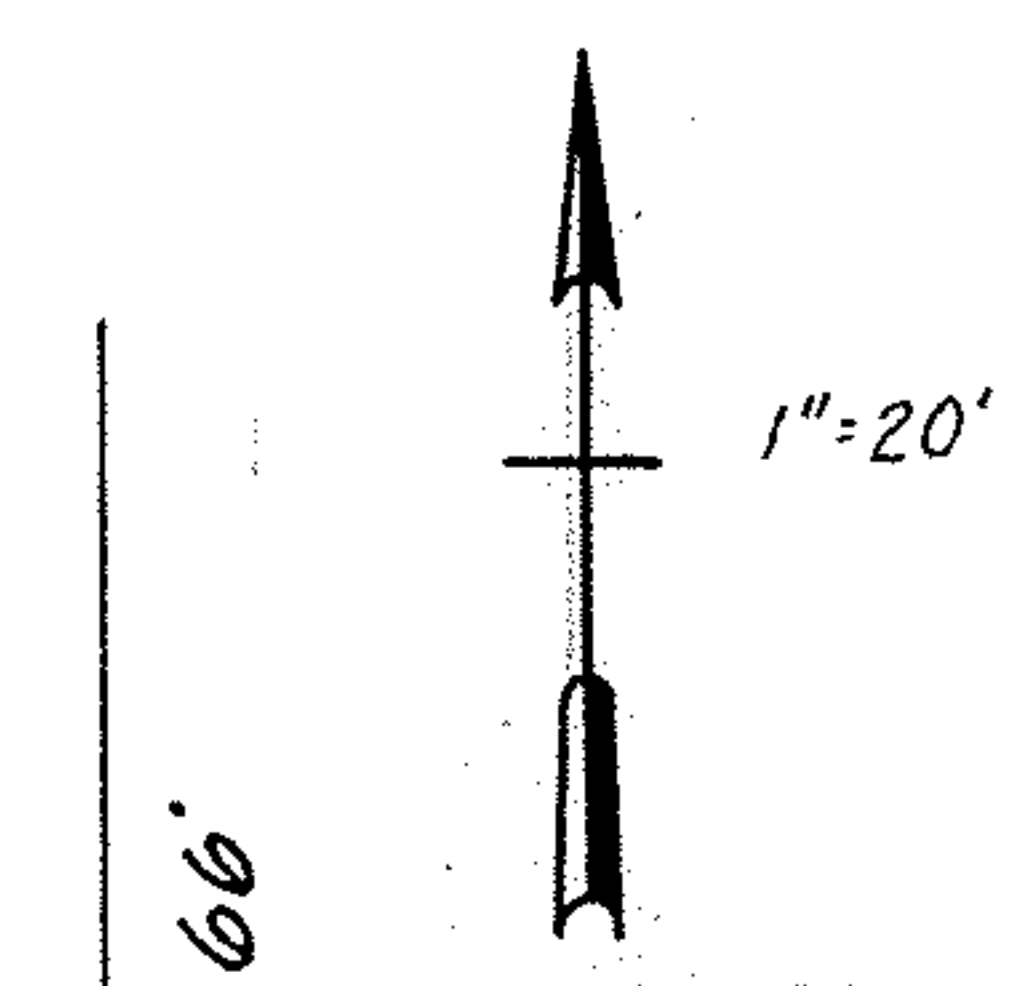
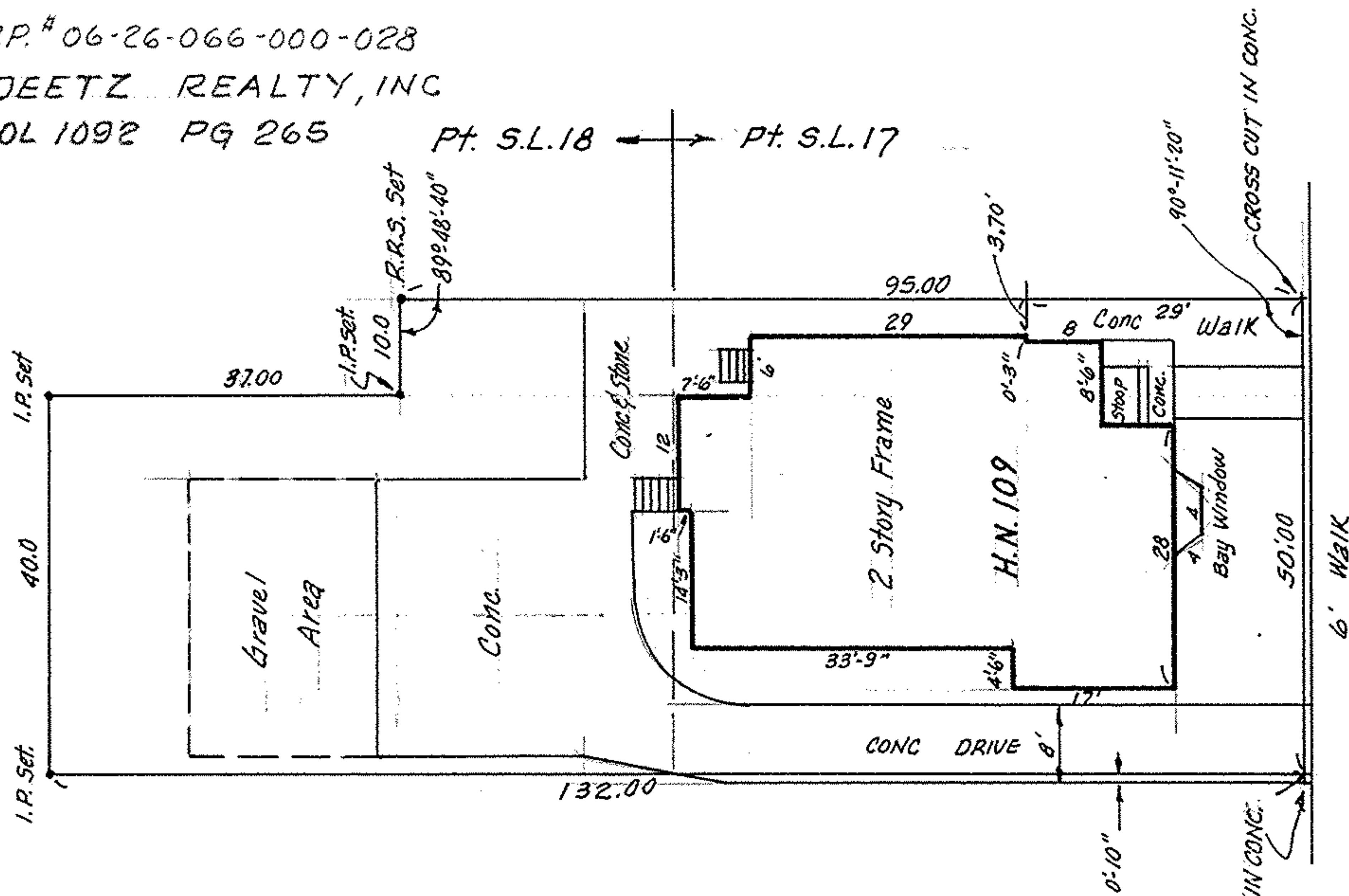


P.P. # 06-26-066-000-028  
 DEETZ REALTY, INC  
 VOL 1092 PG 265



P.P. # 06-26-066-000-030  
 FRANK J. & ANN L. SZELIGA  
 VOL. 918 PG 911

PART of P.P. # 06-26-066-000-029  
 SUBLOTS # 17 & 18 of BLOCK 66 in TOWN PLAT of ELYRIA

ROBERT A. & PATRICIA S. SZELIGA  
 VOL 1151, PG 630

PLAT VOL. 3 PAGE 14  
 PART of ORIG. ELYRIA TWP. LOT 66 BETWEEN the RIVERS  
 NOW in CITY of ELYRIA, OHIO

THIS IS A PLAT OF SURVEY:  
 McGLINCHY & ASSOCIATES  
 MAR. 30, 1979 #795039

FOR ATTORNEY DAVID C. GEORGE