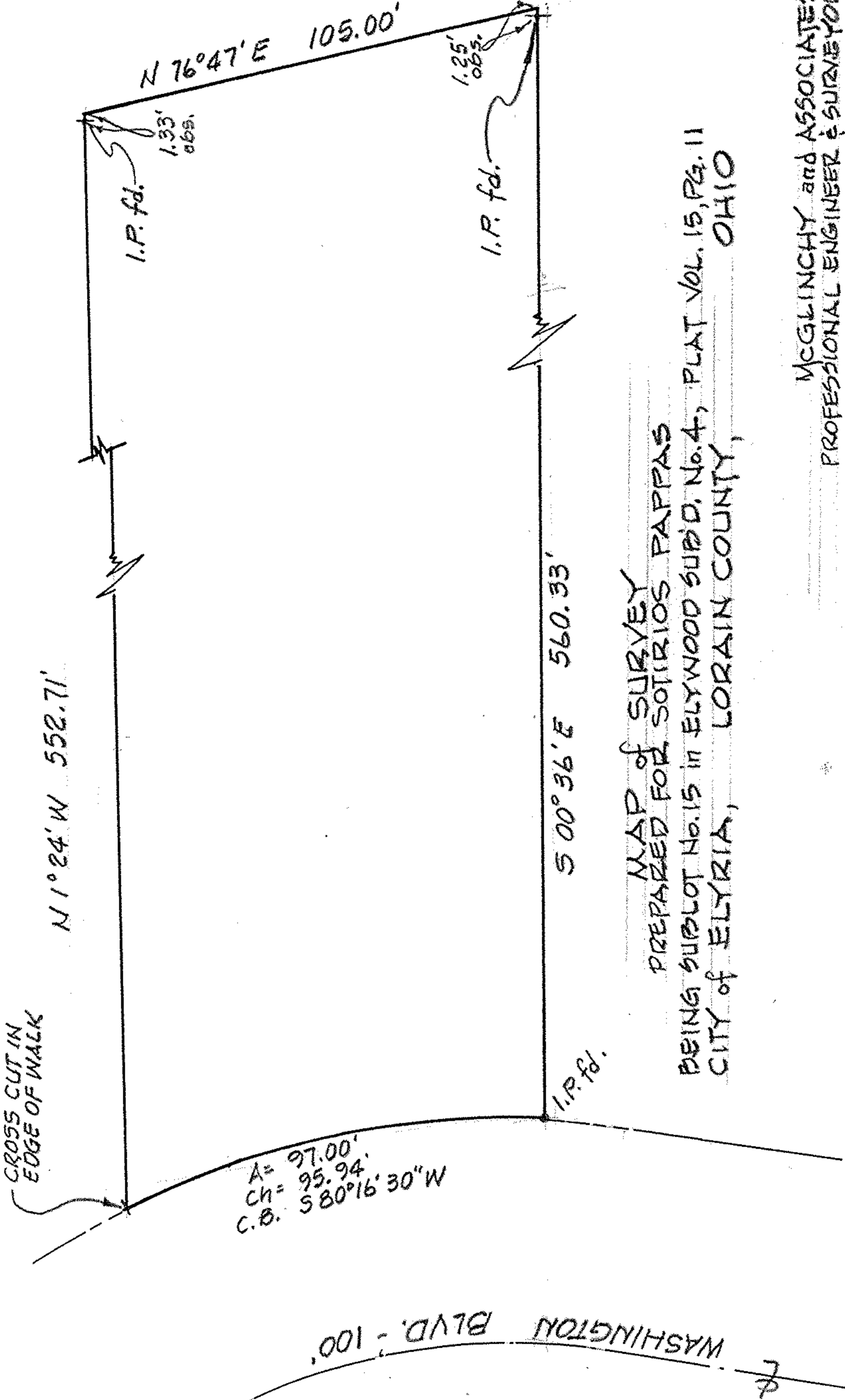


NORTH

SCALE: 1" = 30'



PREPARED FOR SOTIRIOS PAPPAS
 BEING SUBLOT No. 15 IN ELYWOOD SUBD. No. 4, PLAT VOL. 15, PG. 11
 CITY OF ELYRIA, LORAIN COUNTY, OHIO

McGLINCHY and ASSOCIATES
 PROFESSIONAL ENGINEER & SURVEYORS
 ELYRIA
 OHIO
 OCTOBER, 1978
 #784424