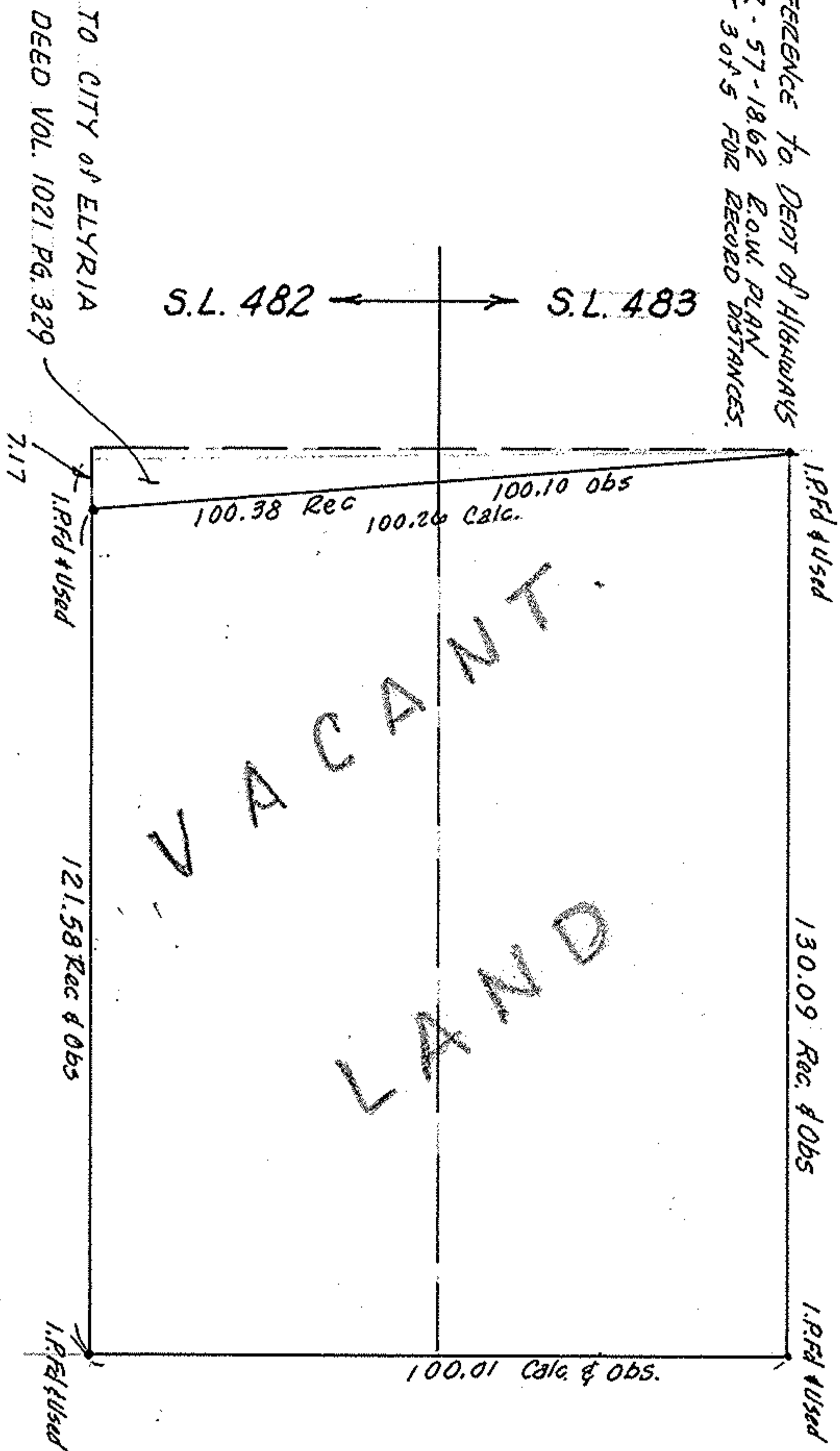


REFERENCE TO DEPT OF HIGHWAYS
LOR. 57-1862 ROW PLAN
SHT 3 of 5 FOR RECORD DISTANCES.



PART of
SUBLOTS # 482 & 483 of LEONA HEIGHTS ALLOT:
PLAT VOL. 6 PAGES 35 & 36
PART of ORIG. ELYRIA TWP. LOT 31
NOW in CITY of ELYRIA, OHIO

McGLINCHY & ASSOCIATES
JAN. 18, 1978 #782948
SURVEY JAN. 30, 1978 CTIC # 10,338