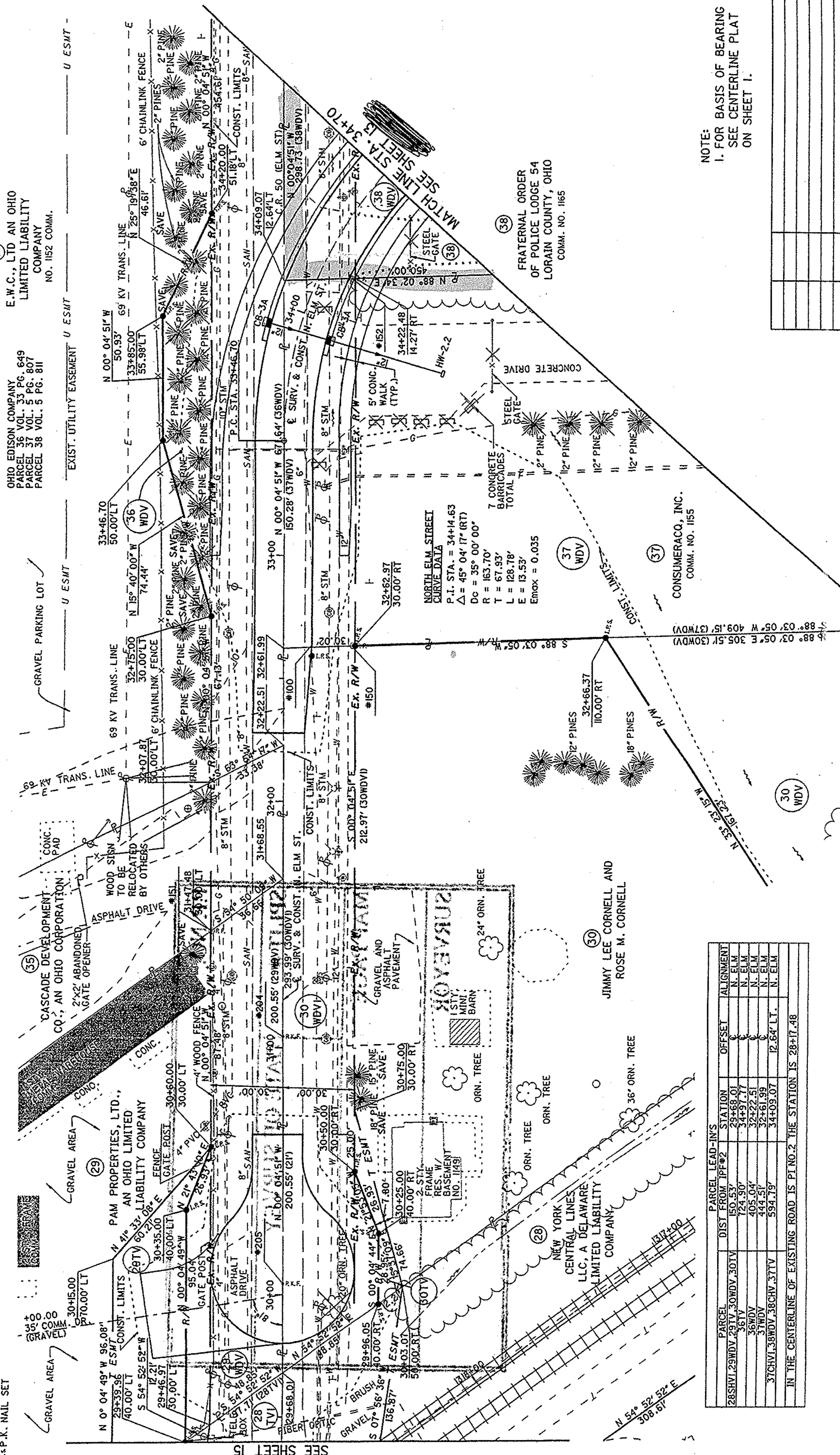


STRUCTURE KEY
 RESIDENTIAL
 COMMERCIAL
 OUT-BUILDING
 SCHOOL

VILLAGE OF GRAFTON
 T5N, R16W
 OF THE CONNECTICUT WESTERN RESERVE
 EATON TOWNSHIP
 LORAIN COUNTY

RECORDED UTILITY EASEMENT
 OHIO EDISON COMPANY
 PARCEL 36 VOL. 33 PG. 649
 PARCEL 37 VOL. 5 PG. 807
 PARCEL 38 VOL. 5 PG. 811
 NO. 1152 COMM.

E.W.C., LTD AN OHIO
 LIMITED LIABILITY
 COMPANY
 NO. 1152 COMM.



PARCEL	PARCEL LEAD-INS	STATION	ALIGNMENT
28SHVI.29WDV.29TV.30WDV.30TV	DIST FROM I.P.P.#2	150.53'	N. ELM
29TV		29+68.01'	N. ELM
36WDV		34+97.77'	N. ELM
37WDV		405.04'	N. ELM
37CHVI.38WDV.38CHV.37TV		32+22.51'	N. ELM
		32+61.99'	N. ELM
		444.51'	N. ELM
		594.19'	N. ELM
		34+09.07'	N. ELM

IN THE CENTERLINE OF EXISTING ROAD IS P.I. NO. 2 THE STATION IS 28+17.48

NOTE:
 1. FOR BASIS OF BEARING
 SEE CENTERLINE PLAT
 ON SHEET I.

REV. BY	DATE	DESCRIPTION

DATE COMPLETED