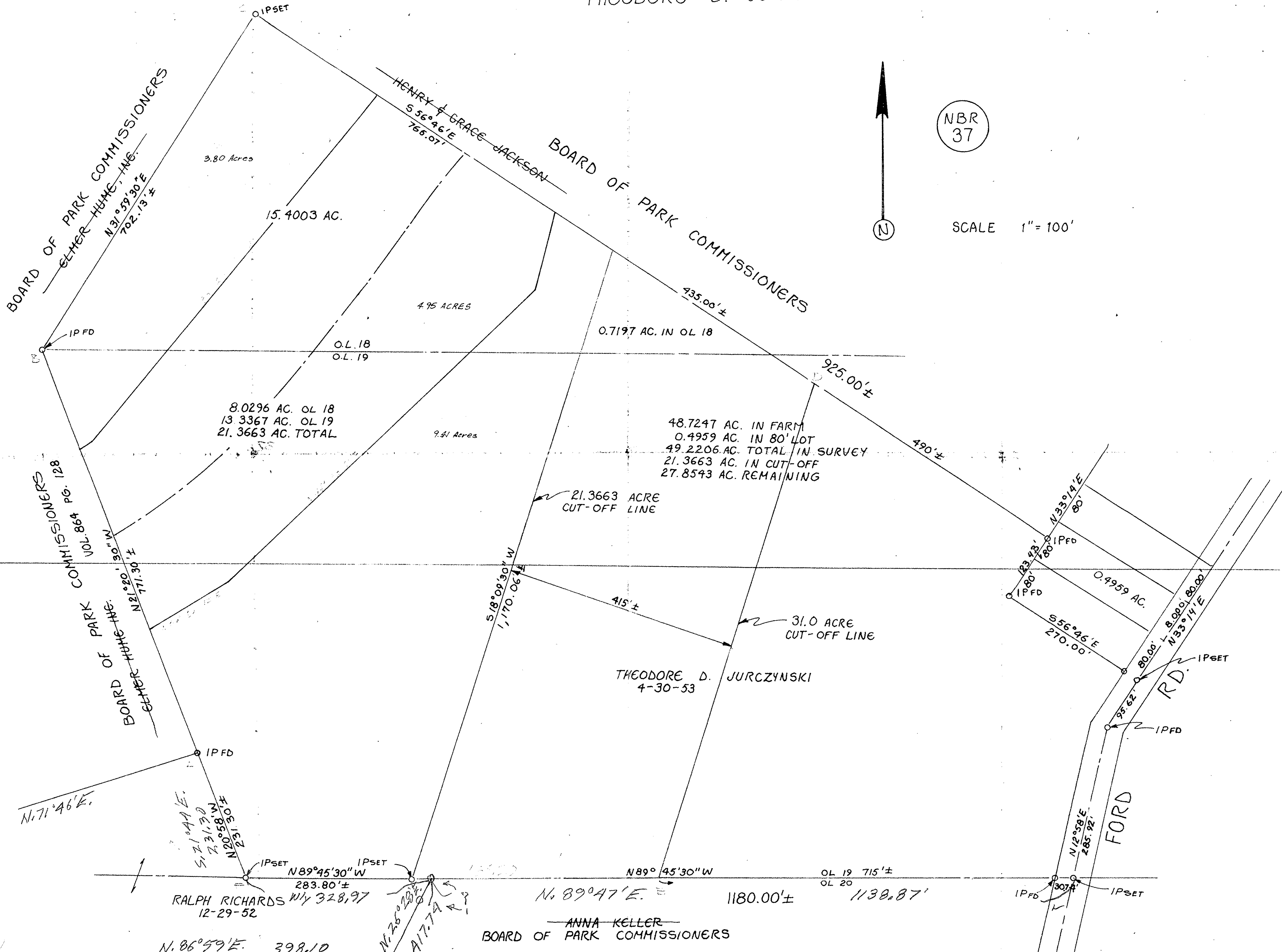


THEODORE D. JURCZYNSKI

NBR 37



SCALE 1" = 100'



BOARD OF PARK COMMISSIONERS
ELMER HUNG, INC.
N 31° 59' 30" E
702.13 ±

BOARD OF PARK COMMISSIONERS
VOL. 864 PG. 128
ELMER HUNG, INC.
N 21° 20' 30" W
771.30 ±

HENRY & GRACE JACKSON
S 56° 46' E
766.07'

BOARD OF PARK COMMISSIONERS

3.80 Acres

15.4003 AC.

4.95 ACRES

0.7197 AC. IN OL 18

8.0296 AC. OL 18
13.3367 AC. OL 19
21.3663 AC. TOTAL

9.41 Acres

48.7247 AC. IN FARM
0.4959 AC. IN 80' LOT
49.2206 AC. TOTAL IN SURVEY
21.3663 AC. IN CUT-OFF
27.8543 AC. REMAINING

21.3663 ACRE
CUT-OFF LINE

31.0 ACRE
CUT-OFF LINE

THEODORE D. JURCZYNSKI
4-30-53

RALPH RICHARDS NY 328,97
12-29-52

ANNA KELLER
BOARD OF PARK COMMISSIONERS

FORD RD.