

0.25 E. of line used for Kosa

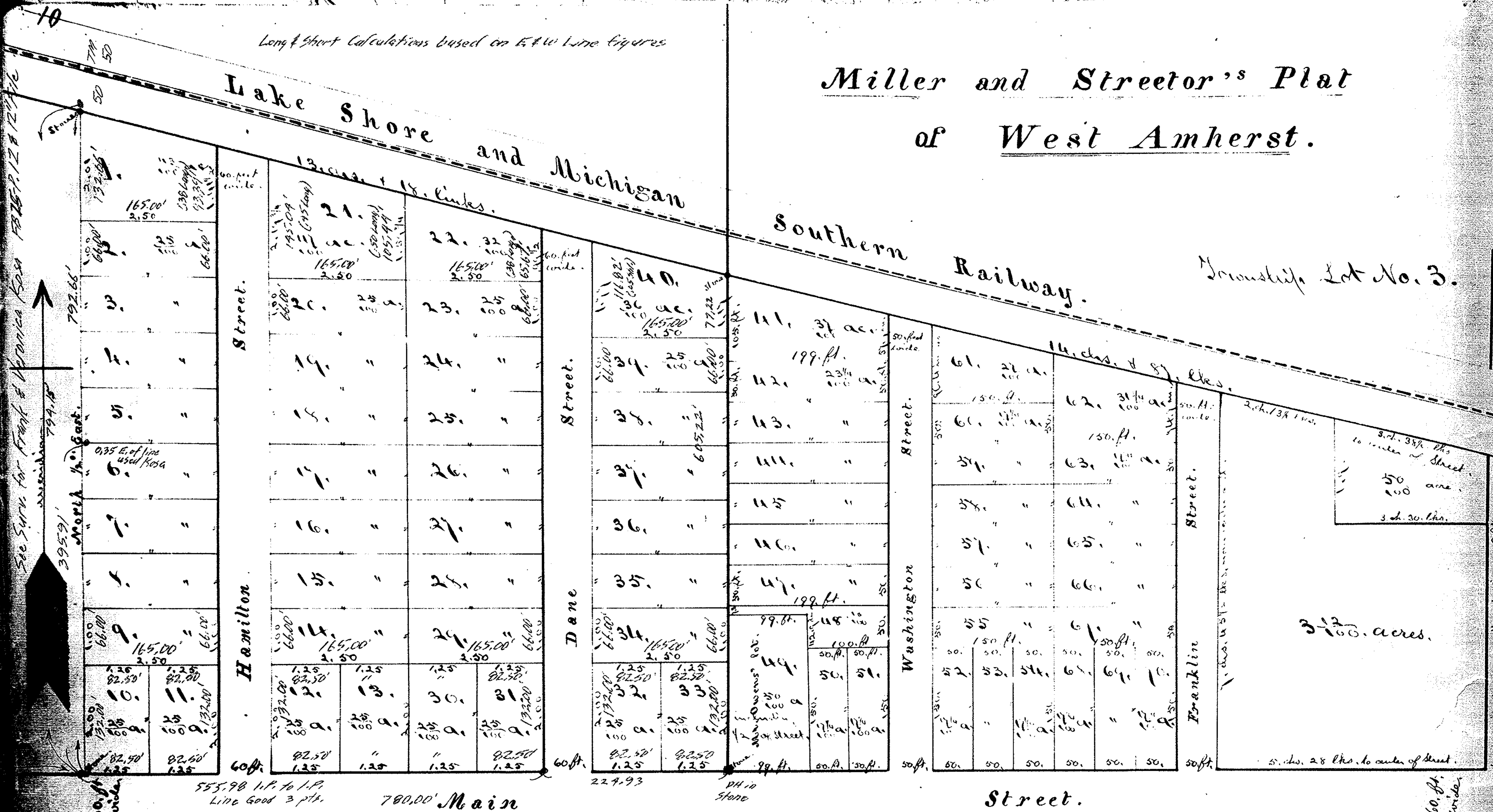
See Surv. for Front & Back for Kosa
 90° 08' 20" E. to M. on line used for Kosa Survey
 90° 09' 30" E. to N. using pin at RR & Main Sts 546
 Note: Using pin at RR & Main before 725 546 would give 792.66

0.17 W. of line used for Kosa

Long & Short Calculations based on E & W Line figures

Miller and Streeter's Plat of West Amherst.

Township Lot No. 3.



I hereby certify that at the request of Joseph J. Redicker and C. P. Streeter I have surveyed and plotted a Village Plat called Main Co. ss. West Amherst in the Southeast corner of Township Lot No. 10. Third District Township in a manner following as indicated by the foregoing Plat, from Lot No. 1. to 40. - The distances on Lots from 1. to 40. are marked with dark ink and are in chains and links owned by Joseph R. Miller - The distances on Lots from No. 40. to 70. are entered in feet, and inches and owned by C. P. Streeter, except No. 49, which is owned by Owens. The Nos. of said Lots are entered with red ink as well as the quantity which is entered in hundredths of acres. For widths of streets and the location of Monuments reference is had to the accompanying Plat, and which is drawn on a scale of thirty nine feet to the inch. September 14th 1872.

Joseph Swift Jr. Lucas County Surveyor.

792.66
 - 605.22
 187.44 ÷ 780.00 = .24031 Tan. = 13° 30' 45" Diff. Road to RR
 7442' for 60 ft & 39.65' for 165' Lot

Road set 22° 18' 21" recorded
 Same day 1146' in a 10' standard