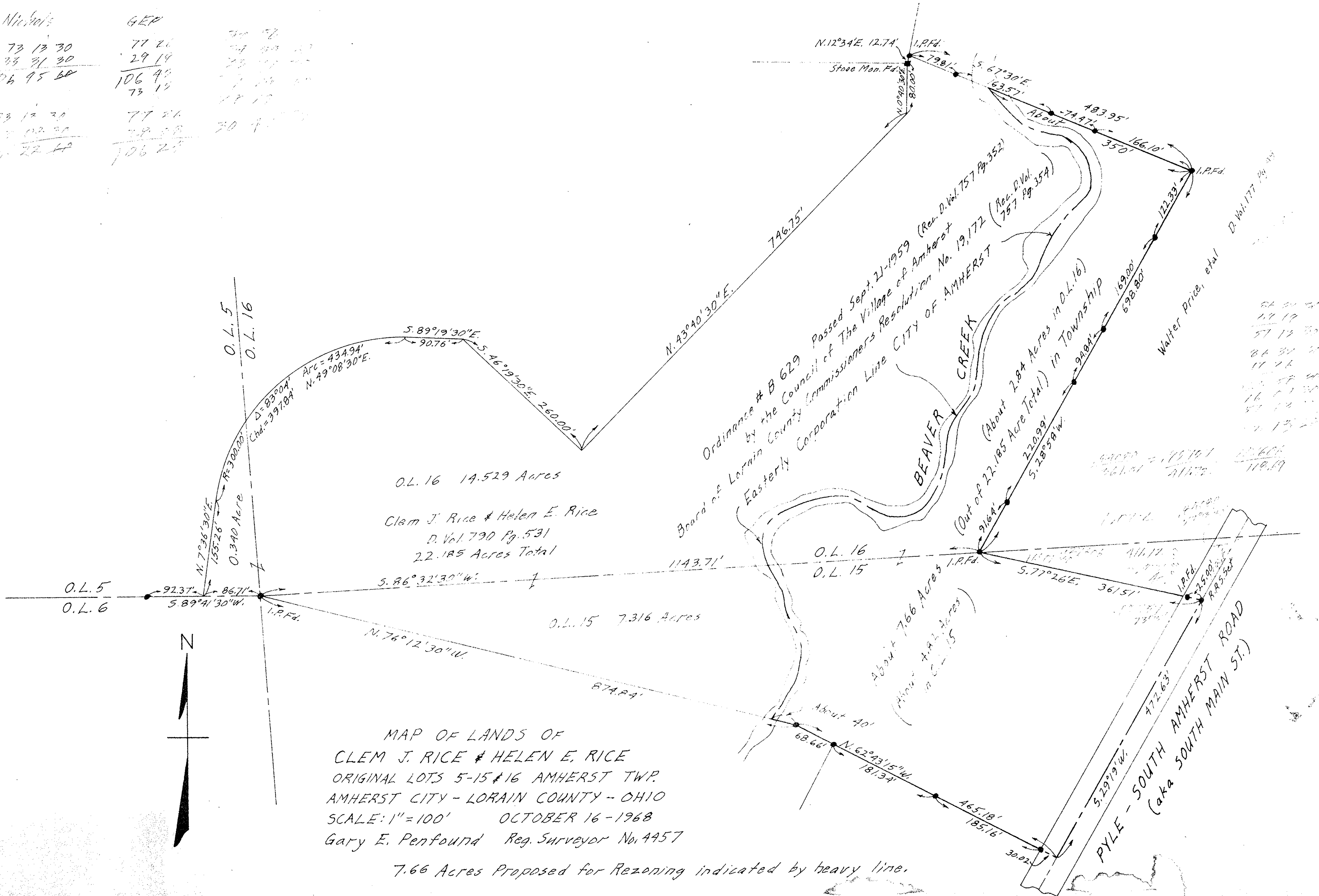


Nichols
 73 13 30
 33 31 30
 106 45 60

GER
 77 26
 29 19
 106 45
 73 19

73 12 30
 33 31 30
 106 45 60

77 26
 29 19
 106 45
 73 19



MAP OF LANDS OF
 CLEM J. RICE & HELEN E. RICE
 ORIGINAL LOTS 5-15 & 16 AMHERST TWP.
 AMHERST CITY - LORAIN COUNTY - OHIO
 SCALE: 1" = 100' OCTOBER 16 - 1968
 Gary E. Penfound Reg. Surveyor No. 4457

7.66 Acres Proposed for Rezoning indicated by heavy line.

64 21 24
 17 19
 57 19 30
 26 32 30
 11 24
 12 58 40
 16 11 30
 57 19 30
 10 13 20

64000 = 115701
 1461.41 / 11172 = 130.66
 119.19