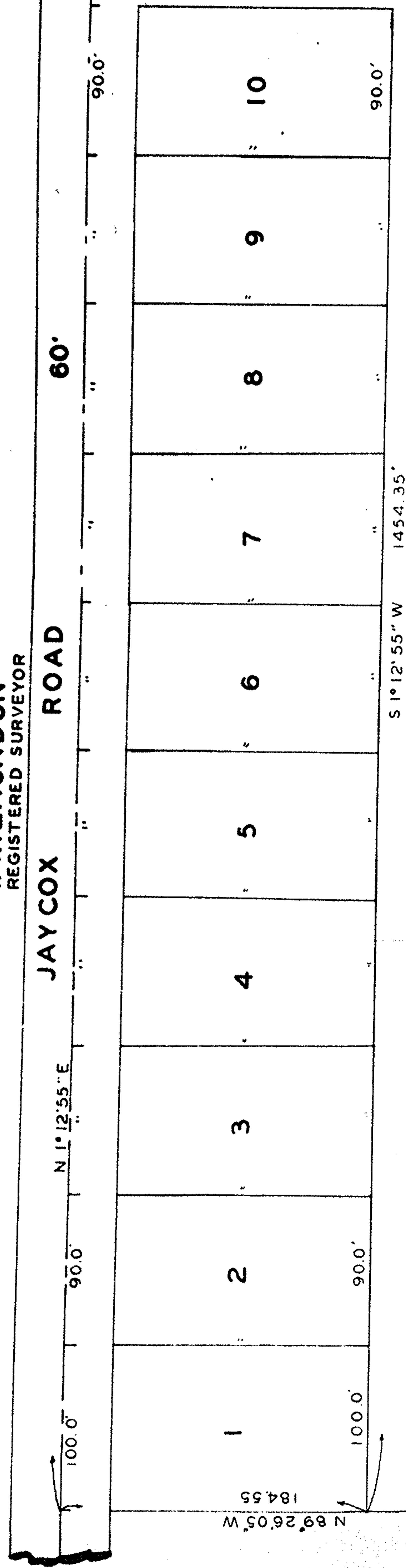
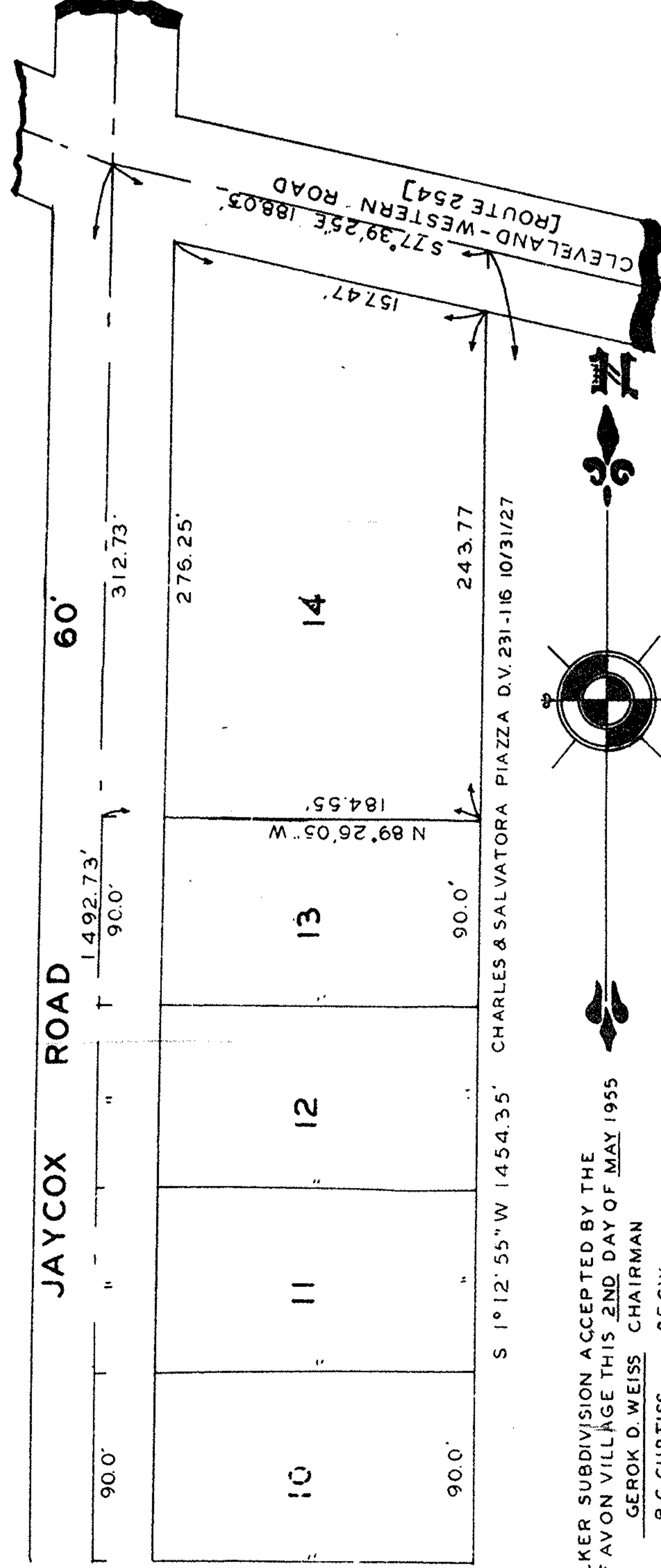


PEARLE WALKER SUBDIVISION
PART OF ORIGINAL SECTION 22
AVON VILLAGE, LORAIN CO.,
STATE OF OHIO

SCALE 1" = 50'
 APRIL, 1955
T. W. LAUNDON
 REGISTERED SURVEYOR



SOUTH LINE OF SEC. 18 7
 50' 0.25' W 12'
 DRILL HOLE IN



THIS PLAT OF PEARL E. WALKER SUBDIVISION ACCEPTED BY THE
 PLANNING COMMISSION OF AVON VILLAGE THIS 2ND DAY OF MAY 1955

GEROK D. WEISS CHAIRMAN
 B.C. CURTISS SEC'Y

ACCEPTED BY THE COUNCIL OF AVON VILLAGE THIS 11TH DAY OF MAY 1955

WILLIAM GATES ACTING MAYOR
 B.C. CURTISS CLERK

OWNER'S CERTIFICATE:

THIS IS TO CERTIFY THAT I, THE UNDERSIGNED PEARL E. WALKER OWNER
 OF LANDS EMBRACED BY THIS PLAT HEREBY ACCEPT THE SAME TO BE CORRECT.

PEARL E. WALKER

SURVEYOR'S CERTIFICATE:

THIS IS TO CERTIFY THAT I HAVE SURVEYED AND PLATTED PEARL E. WALKER
 SUBDIVISION AS SHOWN HEREON, CONTAINING 6.248 ACRES OF LAND IN ORIGINAL
 SECTION 22 OF AVON TOWNSHIP, NOW AVON VILLAGE, IRON PINS WERE FOUND OR
 SET AS SHOWN. DISTANCES SHOWN ARE IN FEET AND DECIMAL PARTS THEREOF.
 ALL OF WHICH I CERTIFY TO BE CORRECT.

T. W. LAUNDON

TRANSFERRED MAY 13, 1955 FRANK AYRES AUDITOR

THIS PLAT PREPARED BY
 ARCHER MUTZ AND STARKY
 CONSULTING ENGINEERS
 NORWALK, OHIO

THIS IS TO CERTIFY THAT
 THIS PLAT HAS BEEN
 FILED IN THE PUBLIC
 RECORDS OF THE
 COUNTY OF LORAIN, OHIO
 THIS 11TH DAY OF MAY 1955

THIS IS TO CERTIFY THAT
 THIS PLAT HAS BEEN
 FILED IN THE PUBLIC
 RECORDS OF THE
 COUNTY OF LORAIN, OHIO
 THIS 11TH DAY OF MAY 1955

STATE OF OHIO } SS:
 COUNTY OF LORAIN }
 THIS IS TO CERTIFY THAT BEFORE ME, A NOTARY PUBLIC IN AND FOR SAID
 COUNTY AND STATE, DID PERSONALLY APPEAR PEARLE WALKER, WHO ACKNOWLEDGED
 THE SIGNING OF THIS PLAT TO BE HER FREE ACT AND DEED IN WITNESS WHEREOF
 I HAVE HEREUNTO SET MY HAND AND SEAL AT ELYRIA, OHIO THIS 11TH DAY OF MAY 1955

VIOLET UJLAKI

MY COMMISSION EXPIRES MAR 30, 1956

VIOLET UJLAKI, NOTARY PUBLIC

MY COMMISSION EXPIRES MAR 30, 1956

SEAL
 NOTARY

RECEIVED FOR RECORD MAY 16, 1955 AT 10:30 A.M.

RECORDED MAY 16, 1955 IN RECORD VOL. 18, PAGE 4

LEOTA B. MITCHELL

LORAIN COUNTY RECORDER

M.C.

RECORDING FEE \$20.50

SEAL
 SURVEYOR

SURVEYORS CERTIFY
 THIS PLAT HAS BEEN
 OWNED BY THE PLAT
 ORIGINAL AVON TO
 OHIO, AND MORE DE
 OF REDWOOD BLVD.
 LINE OF AVON BELD
 THE PRINCIPAL PLAC
 A DISTANCE OF 366.67
 THENCE N 0° 42' 31" E A
 190.00 FEET TO THE P
 THIS PLAT IS A TRUE
 OR SET AND MONUME
 COORDINATED SYSTEM
 ENGINEERING DEPT.
 IRON PINS,
 MONUMENT ©

THIS IS TO CERTIFY THAT
 THIS PLAT HAS BEEN
 OWNED BY THE PLAT
 ORIGINAL AVON TO
 OHIO, AND MORE DE
 OF REDWOOD BLVD.
 LINE OF AVON BELD
 THE PRINCIPAL PLAC
 A DISTANCE OF 366.67
 THENCE N 0° 42' 31" E A
 190.00 FEET TO THE P
 THIS PLAT IS A TRUE
 OR SET AND MONUME
 COORDINATED SYSTEM
 ENGINEERING DEPT.
 IRON PINS,
 MONUMENT ©

THIS IS TO CERTIFY THAT
 THIS PLAT HAS BEEN
 OWNED BY THE PLAT
 ORIGINAL AVON TO
 OHIO, AND MORE DE
 OF REDWOOD BLVD.
 LINE OF AVON BELD
 THE PRINCIPAL PLAC
 A DISTANCE OF 366.67
 THENCE N 0° 42' 31" E A
 190.00 FEET TO THE P
 THIS PLAT IS A TRUE
 OR SET AND MONUME
 COORDINATED SYSTEM
 ENGINEERING DEPT.
 IRON PINS,
 MONUMENT ©

THIS IS TO CERTIFY THAT
 THIS PLAT HAS BEEN
 OWNED BY THE PLAT
 ORIGINAL AVON TO
 OHIO, AND MORE DE
 OF REDWOOD BLVD.
 LINE OF AVON BELD
 THE PRINCIPAL PLAC
 A DISTANCE OF 366.67
 THENCE N 0° 42' 31" E A
 190.00 FEET TO THE P
 THIS PLAT IS A TRUE
 OR SET AND MONUME
 COORDINATED SYSTEM
 ENGINEERING DEPT.
 IRON PINS,
 MONUMENT ©

THIS IS TO CERTIFY THAT
 THIS PLAT HAS BEEN
 OWNED BY THE PLAT
 ORIGINAL AVON TO
 OHIO, AND MORE DE
 OF REDWOOD BLVD.
 LINE OF AVON BELD
 THE PRINCIPAL PLAC
 A DISTANCE OF 366.67
 THENCE N 0° 42' 31" E A
 190.00 FEET TO THE P
 THIS PLAT IS A TRUE
 OR SET AND MONUME
 COORDINATED SYSTEM
 ENGINEERING DEPT.
 IRON PINS,
 MONUMENT ©

THIS IS TO CERTIFY THAT
 THIS PLAT HAS BEEN
 OWNED BY THE PLAT
 ORIGINAL AVON TO
 OHIO, AND MORE DE
 OF REDWOOD BLVD.
 LINE OF AVON BELD
 THE PRINCIPAL PLAC
 A DISTANCE OF 366.67
 THENCE N 0° 42' 31" E A
 190.00 FEET TO THE P
 THIS PLAT IS A TRUE
 OR SET AND MONUME
 COORDINATED SYSTEM
 ENGINEERING DEPT.
 IRON PINS,
 MONUMENT ©