

PLAT OF SURVEYS FOR
WILLIAM J. SCHNEIDER AND
FOR THOMAS AND TIMOTHY SCHNEIDER

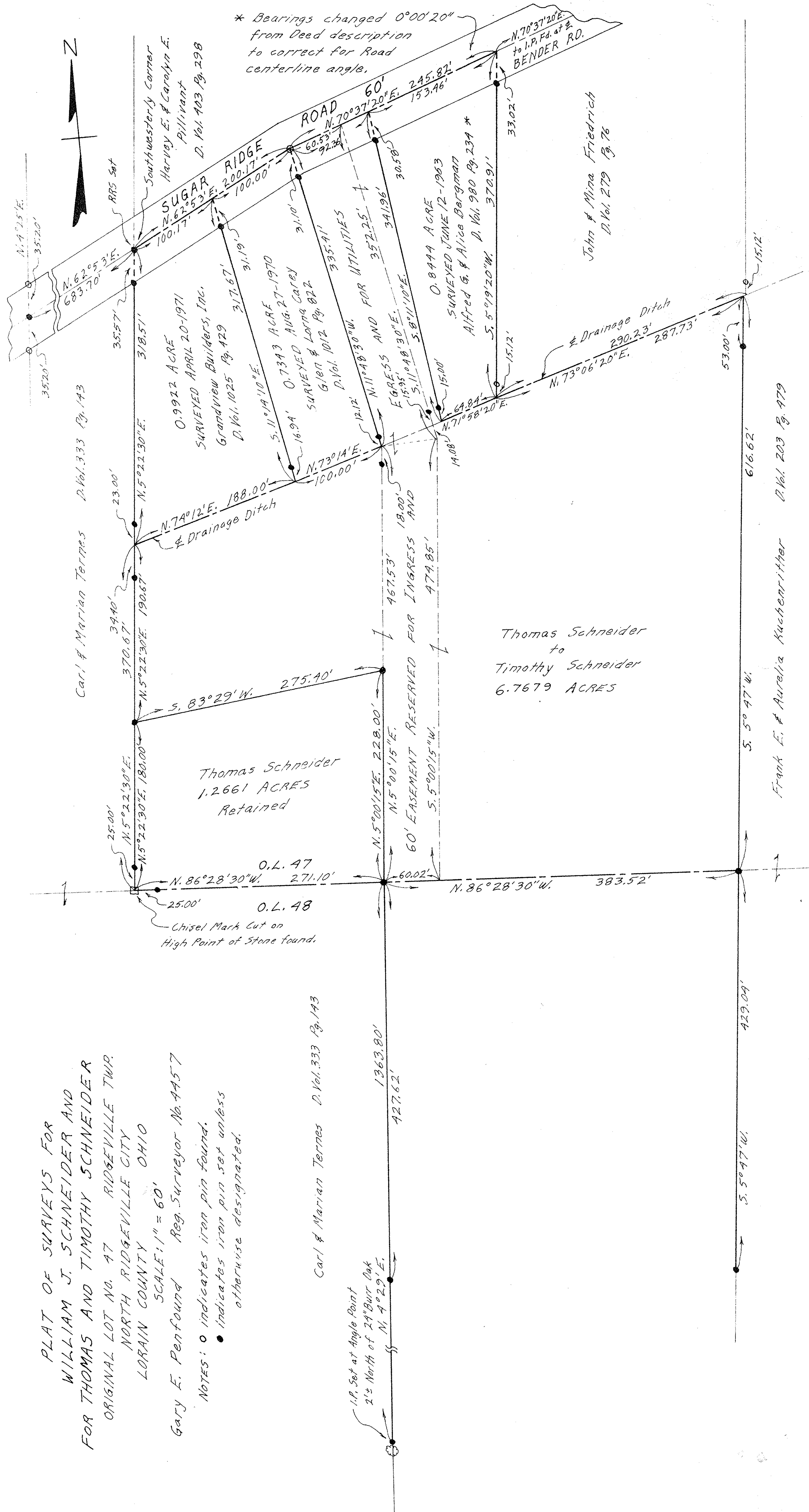
ORIGINAL LOT NO. 47 RIDGEVILLE TWP.
NORTH RIDGEVILLE CITY
LORAIN COUNTY OHIO

Gary E. Penfound Reg. Surveyor No. 4457
SCALE: 1" = 60'

NOTES: ○ indicates iron pin found.
● indicates iron pin set unless
otherwise designated.

Carl & Marian Ternes D. Vol. 333 Pg. 143

I.P. Set at Angle Point
2 1/2 North of 24" Burr Oak
N. 4° 29' E.



Thomas Schneider
1.2661 ACRES
Retained

Thomas Schneider
to
Timothy Schneider
6.7679 ACRES

* Bearings changed 0° 00' 20"
from Deed description
to correct for Road
centerline angle.



Carl & Marian Ternes D. Vol. 333 Pg. 143

0.9922 ACRE
SURVEYED APRIL 20-1971
Grandview Builders, Inc.
D. Vol. 1025 Pg. 429

0.7343 ACRE
SURVEYED AUG. 27-1970
Glen & Lorna Carey
D. Vol. 1012 Pg. 822

0.8444 ACRE
SURVEYED JUNE 12-1963
Alfred G. & Alice Bergman
D. Vol. 980 Pg. 234 *

John & Mina Friedrich
D. Vol. 279 Pg. 76

Frank E. & Aurelia Kuchenrither D. Vol. 203 Pg. 979

Carl & Marian Ternes D. Vol. 333 Pg. 143

0.9922 ACRE
SURVEYED APRIL 20-1971
Grandview Builders, Inc.
D. Vol. 1025 Pg. 429

0.7343 ACRE
SURVEYED AUG. 27-1970
Glen & Lorna Carey
D. Vol. 1012 Pg. 822

0.8444 ACRE
SURVEYED JUNE 12-1963
Alfred G. & Alice Bergman
D. Vol. 980 Pg. 234 *

John & Mina Friedrich
D. Vol. 279 Pg. 76

Frank E. & Aurelia Kuchenrither D. Vol. 203 Pg. 979

Carl & Marian Ternes D. Vol. 333 Pg. 143

0.9922 ACRE
SURVEYED APRIL 20-1971
Grandview Builders, Inc.
D. Vol. 1025 Pg. 429

0.7343 ACRE
SURVEYED AUG. 27-1970
Glen & Lorna Carey
D. Vol. 1012 Pg. 822

0.8444 ACRE
SURVEYED JUNE 12-1963
Alfred G. & Alice Bergman
D. Vol. 980 Pg. 234 *

John & Mina Friedrich
D. Vol. 279 Pg. 76

Frank E. & Aurelia Kuchenrither D. Vol. 203 Pg. 979

Carl & Marian Ternes D. Vol. 333 Pg. 143

0.9922 ACRE
SURVEYED APRIL 20-1971
Grandview Builders, Inc.
D. Vol. 1025 Pg. 429

0.7343 ACRE
SURVEYED AUG. 27-1970
Glen & Lorna Carey
D. Vol. 1012 Pg. 822

0.8444 ACRE
SURVEYED JUNE 12-1963
Alfred G. & Alice Bergman
D. Vol. 980 Pg. 234 *

John & Mina Friedrich
D. Vol. 279 Pg. 76

Frank E. & Aurelia Kuchenrither D. Vol. 203 Pg. 979