

Curve Data

Ch. Bearing	Arc	Ch	Δ
N 60° 31' 46" E	40.94'	40.94'	0° 12' 13"
N 57° 42' 42" E	118.78'	118.78'	0° 35' 26"

Radius  
11,524.2'

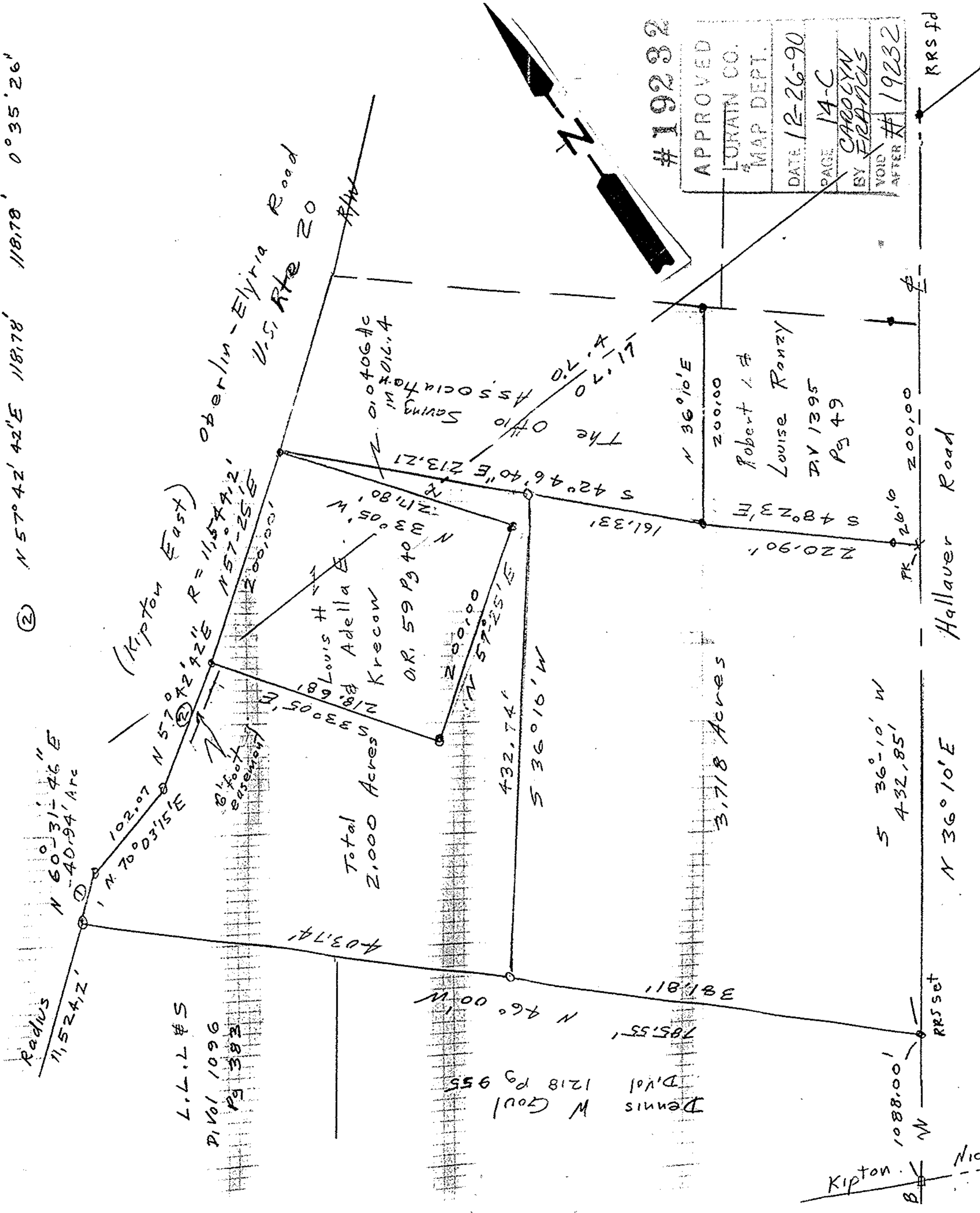
(Kipton East)

L.L.L. #5  
Divol 1096  
Pg 383

Total Acres  
2.000

Dennis W Goul  
Divol 1218 Pg 955

3.718 Acres



0 iron pins set  
0 iron pipes fd  
Right of ways Plans Sec A  
US RT 20 1937  
From Parcel 41

John Poyjwood  
Reg Surveyor  
5292