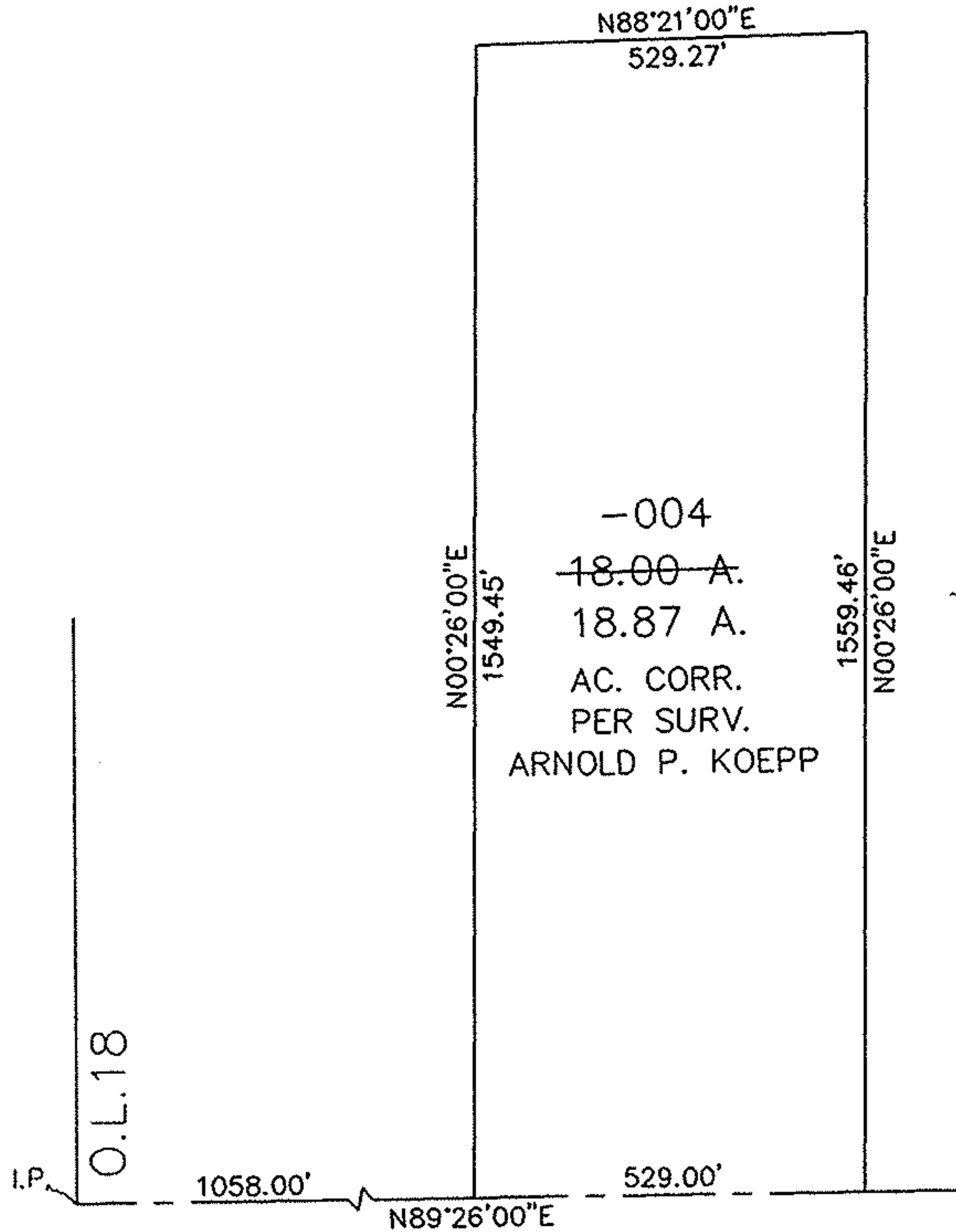
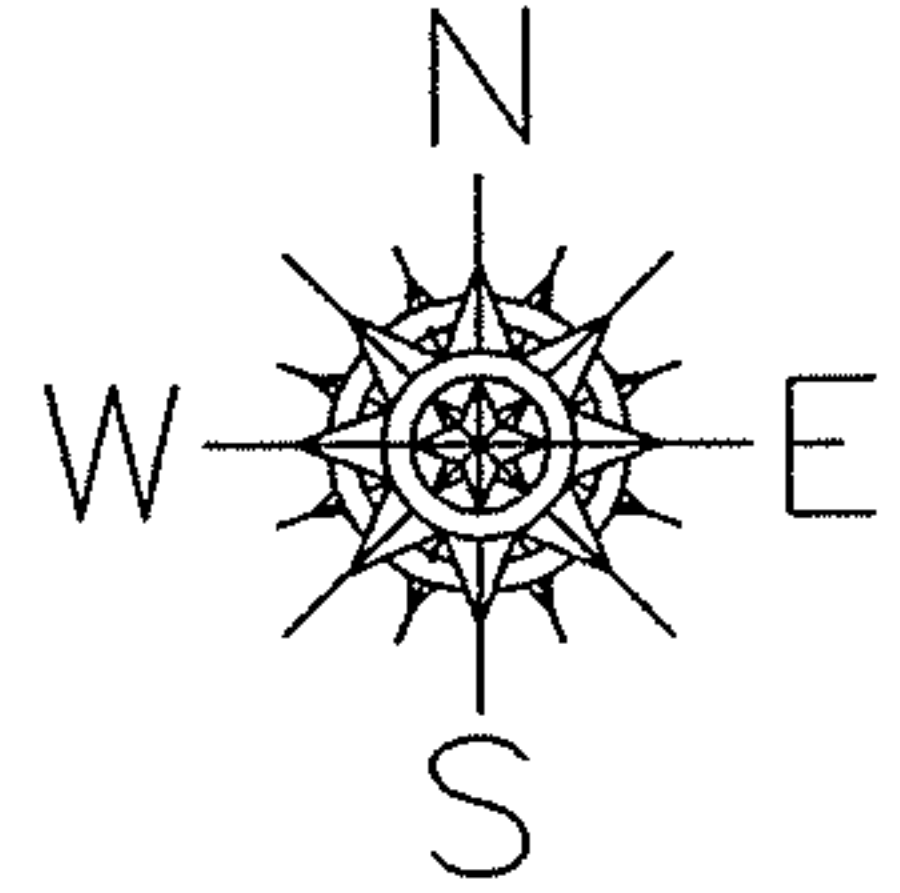


PARENT PARCEL: 14-00-018-000-004

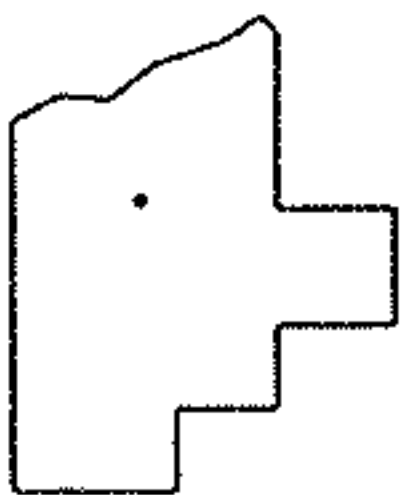
CHILD PARCEL: XX-XX-XXX-XXX-XXX

STARTING POINT: I.P. AT S.W. CORNER OF O.L. 18 & CL. OF KIPTON NICKLE PLATE RD.

NO. 22536-D



KIPTON NICKLE PLATE RD.



SPLITS/DEEDS PROCESSED
 LORAIN COUNTY TAX MAP DEPARTMENT
 226 MIDDLE AVE. ELYRIA, OHIO

SURVEYED BY: ARNOLD P KOEPP
 CLOSURE: 0.00 : 10,000
 MAP PAGE(S): 14-C
 APPROVED BY: TJS DATE: 06/01/98
 SCALE: 1" = 300 PRIOR INSTRUMENT: DV 1284/17