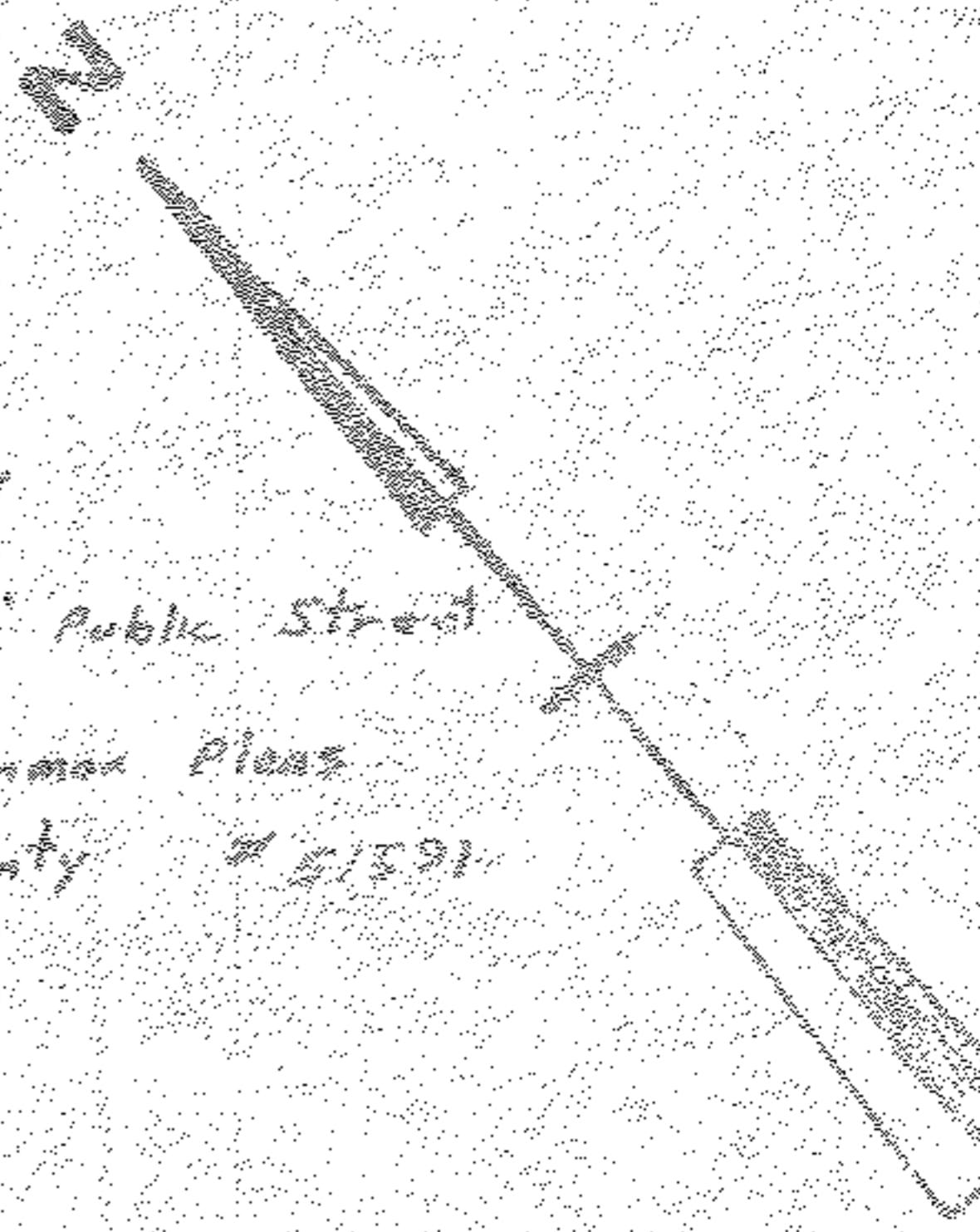
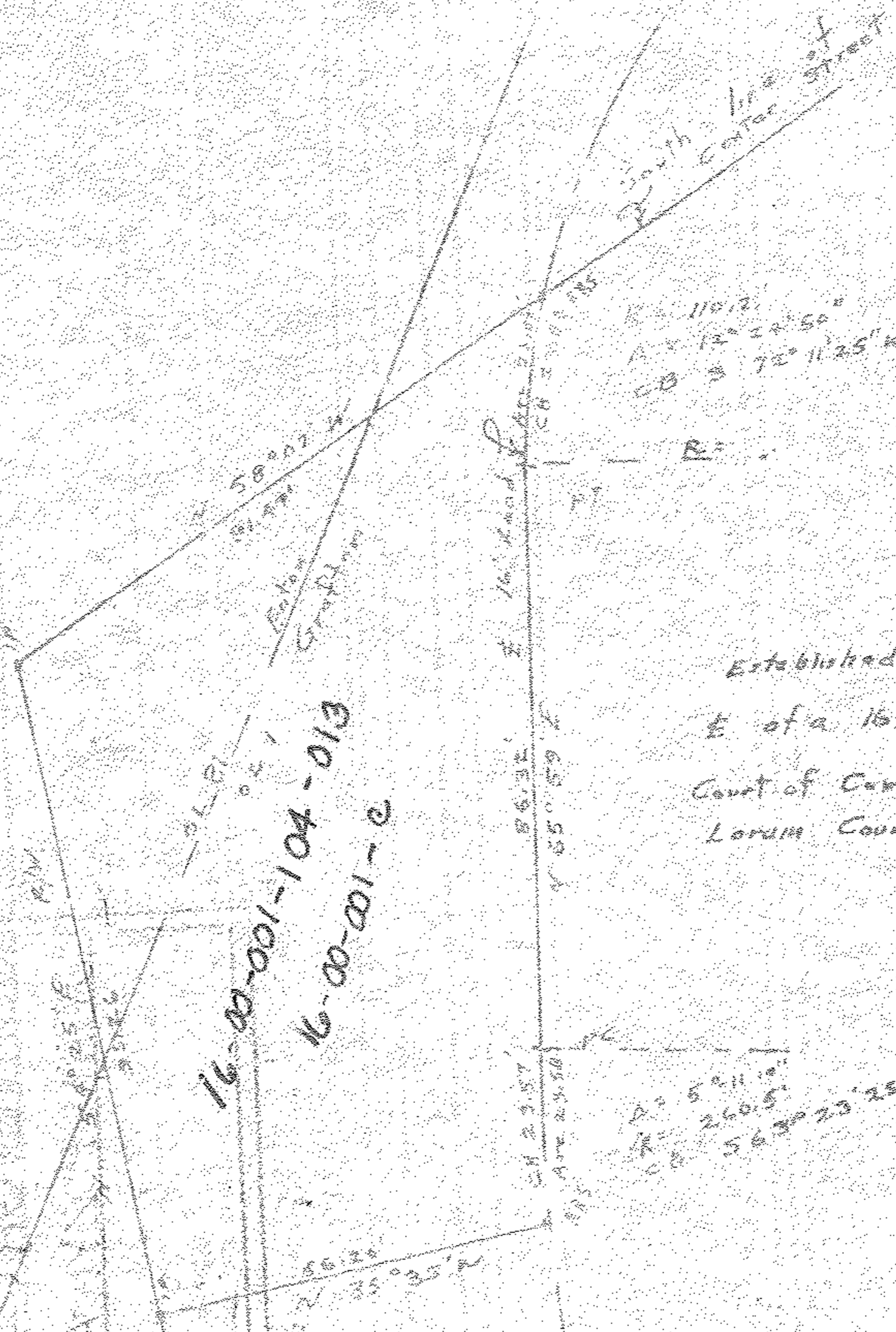


16-00-001-104-  
Scan # 35950

16-00-001-104-013  
16-00-001-013

#11247

APPROVED	
LORAIN CO.	
MAP DEP.	
DATE	11-23-77
PAGE	16-00-001-C
BY	M. Seabolt
VOID AFTER	11247



Established  
E of a 16' Public Street  
Court of Common Pleas  
Lorain County # 51391

Survey for Wells Mole  
Part Original  
Original Grafton Trwp  
Rawsonville Plat sublot 1 of BLK 1  
Village of Grafton  
Lorain County  
Scale 1" = 30' (Nov 77)