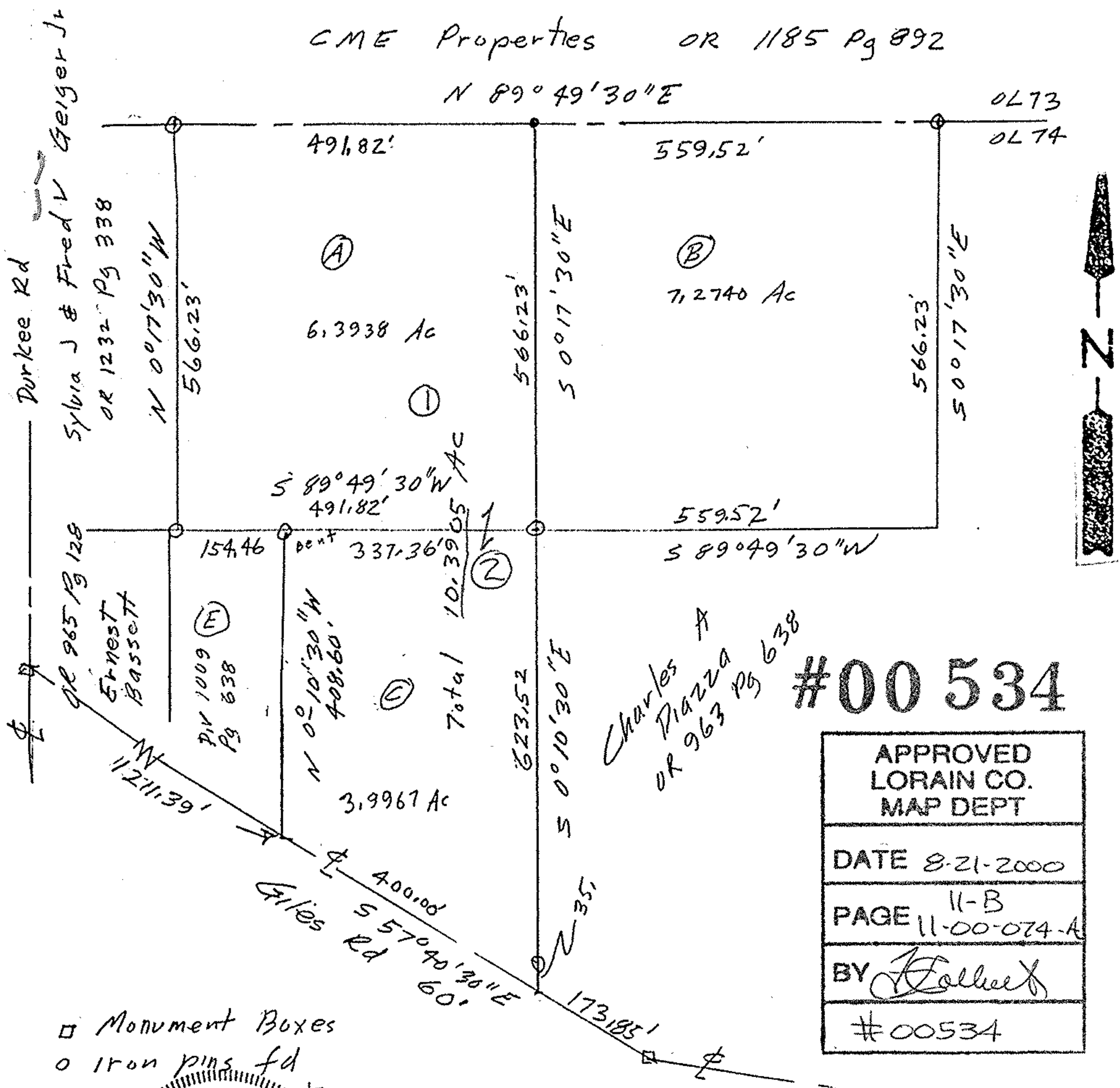


F. & C. James E & Trudy M Bassett  
 Div 1009 Pg 638 Div 1076 Pg 501

A & B Charles A Piazza DR 963 Pg 638

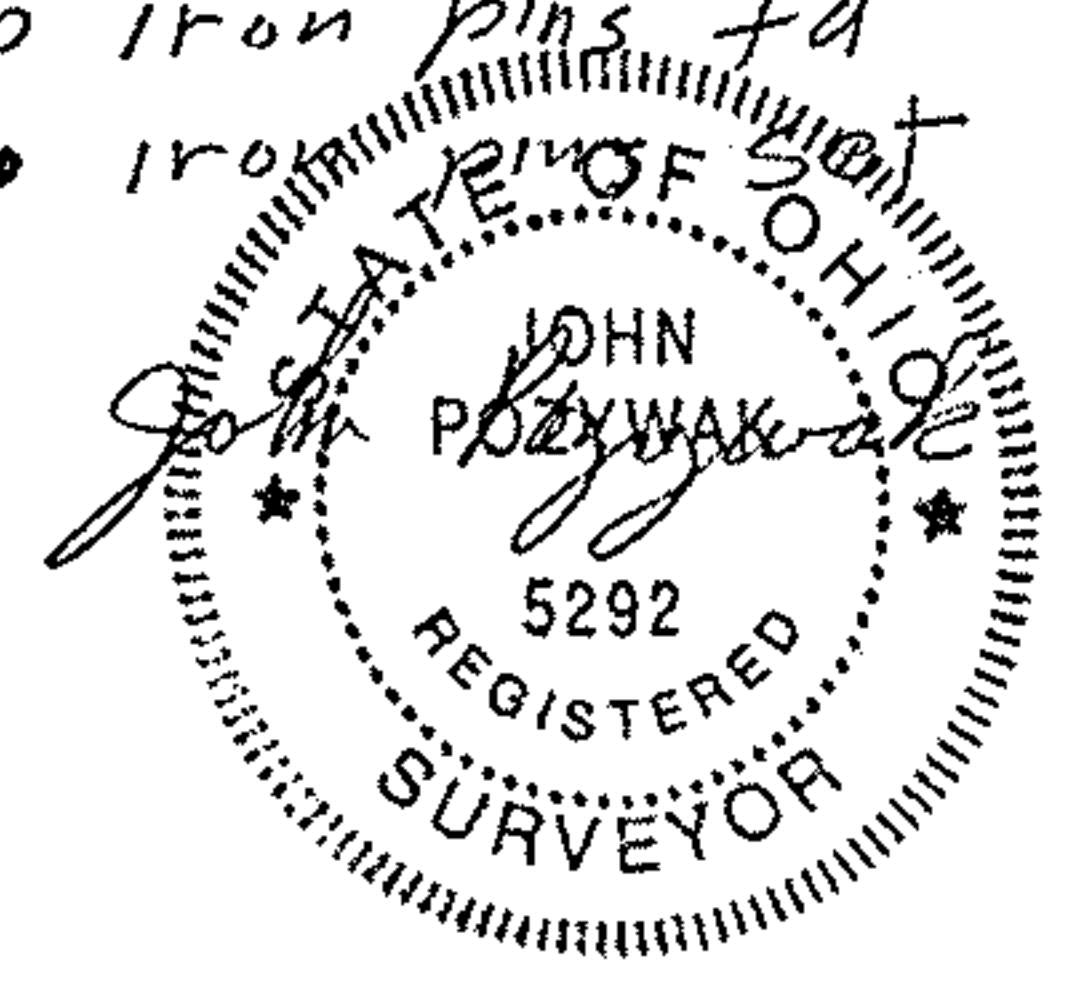
CME Properties OR 1185 Pg 892



#00534

APPROVED LORAIN CO. MAP DEPT
DATE 8-21-2000
PAGE 11-B 11-00-074-A
BY <i>[Signature]</i>
#00534

- Monument Boxes
- Iron pins fd
- Iron pins



Survey of Parcel Splits  
 Original Lot 74  
 Eaton Township  
 Lorain County Ohio  
 Scale 1"=200' July 2000  
 feet

