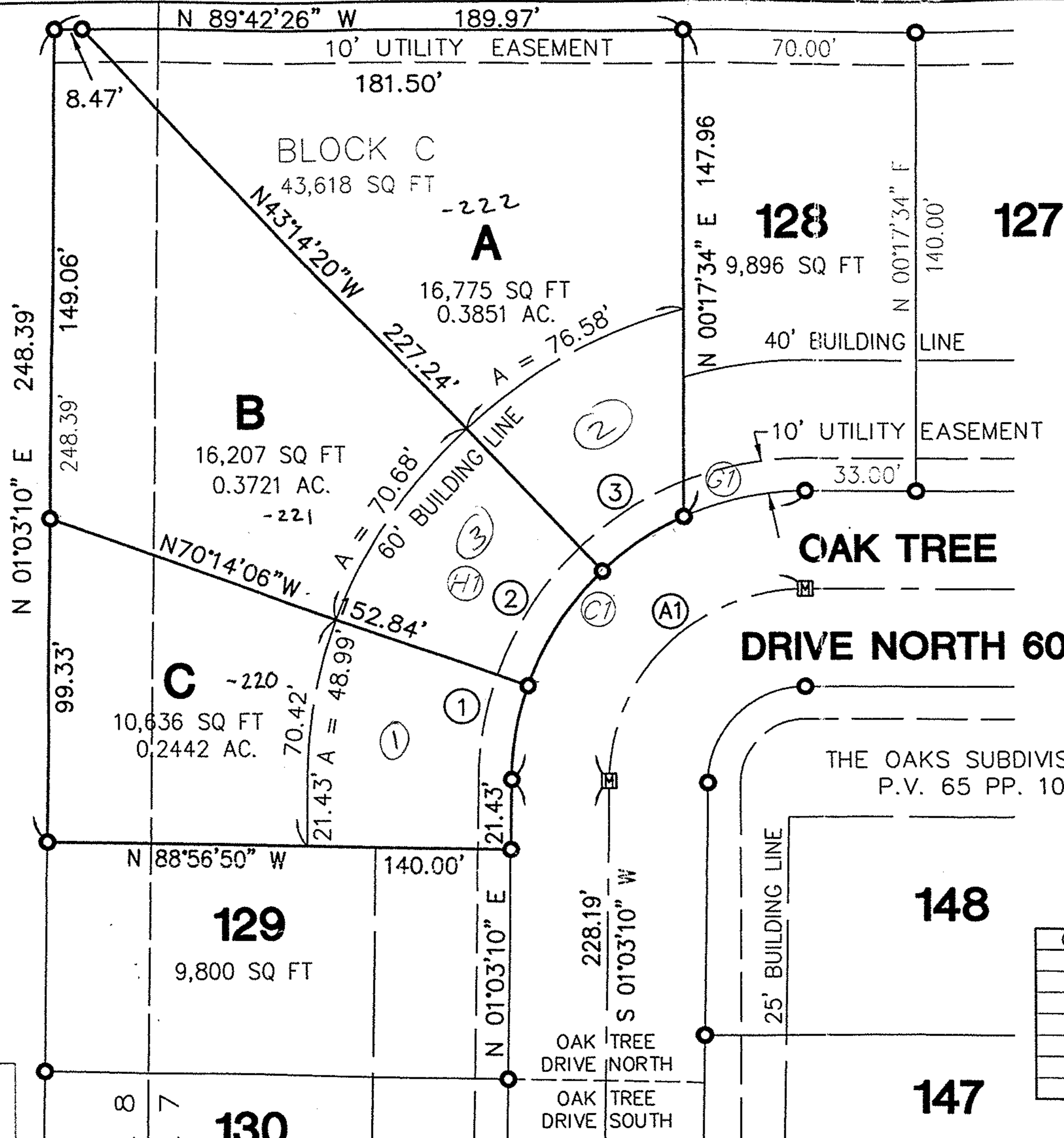
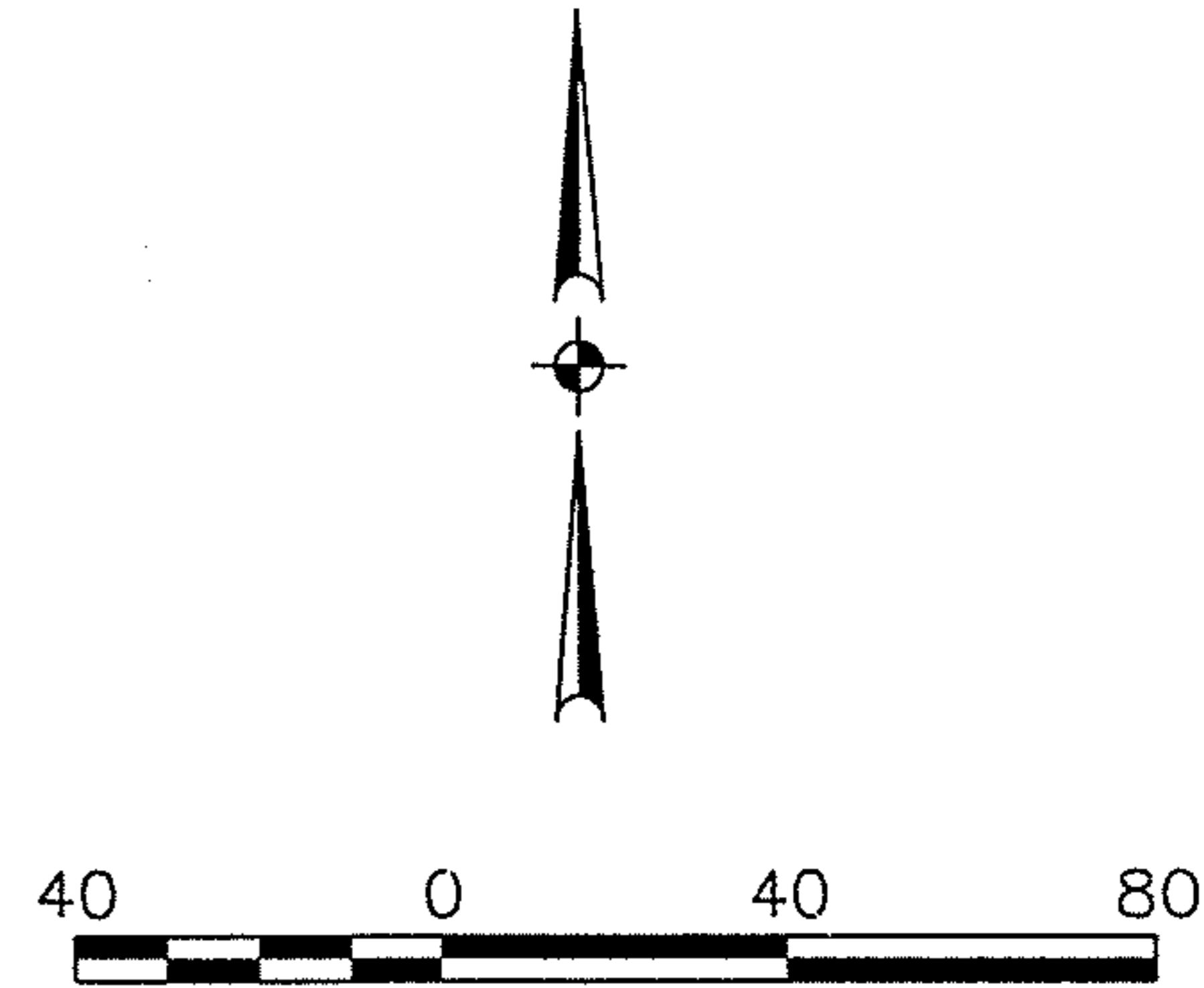


OHIO EDISON COMPANY
D.V. 648 P. 197



#00476

APPROVED
LORAIN CO.
MAP DEPT.
DATE 6/22/00
PAGE 2-03-007-A
BY T. Sible
00476



SCALE IN FEET
SCALE: 1" = 40'

APPROVED
AS TO DESCRIPTION ONLY
Date May 11, 2000
Per Kimberly Hoskin
Engineering Dept.

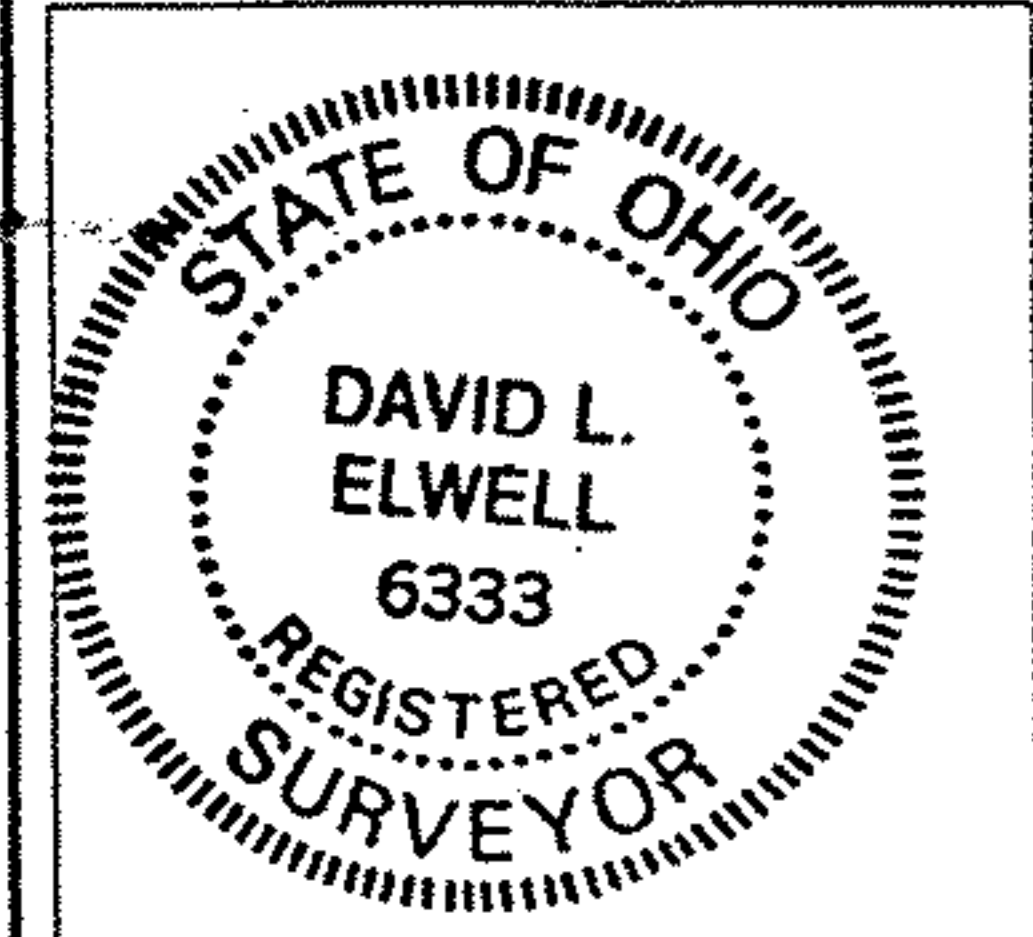
APPROVED BY THE LORAIN CITY PLANNING
COMMISSION..... NO PLAT REQUIRED
William E. Doherty 5-15-2000
SECRETARY LORAIN CITY PLANNING COMMISSION

THE OAKS SUBDIVISION NO. 6
P.V. 65 PP. 10 & 11

CURVE TABLE

CURVE	RADIUS	LENGTH	TANGENT	CHORD	BEARING	DELTA
A1	60.00'	93.45'	59.21'	84.29'	S 45°40'22" W	89°14'24"
C1	90.00'	140.18'	88.81'	126.43'	N 45°40'22" E	89°14'24"
G1	90.00'	38.13'	19.36'	37.85'	N 78°09'20" E	24°16'27"
H1	90.00'	102.05'	57.30'	96.67'	N 33°32'08" E	64°57'57"
1	90.00'	29.39'	14.83'	29.26'	S 10°24'32" W	18°42'45"
2	90.00'	42.41'	21.60'	42.01'	N 33°15'47" E	26°59'46"
3	90.00'	30.25'	15.27'	30.11'	N 56°23'23" E	19°15'27"

02-03-007-000-220 thru 222



DAVID L. ELWELL, REGISTERED SURVEYOR NO. 6333

KS ASSOCIATES
424 Middle Avenue
P.O. Box 569
Elyria, Ohio 44036
Phone (440) 322-6317
Fax (440) 284-0623
mailroom@ksassoc.com
www.ksassoc.com

SURVEY MAP
OF "BLOCK C" IN
THE OAKS SUBDIVISION NO. 6 - P.V. 65 PP. 10 & 11
CITY OF LORAIN COUNTY OF LORAIN STATE OF OHIO
DATE: APRIL 6, 2000

JOB NO. 92413-BCR
DWG. NAME O-PCLO1