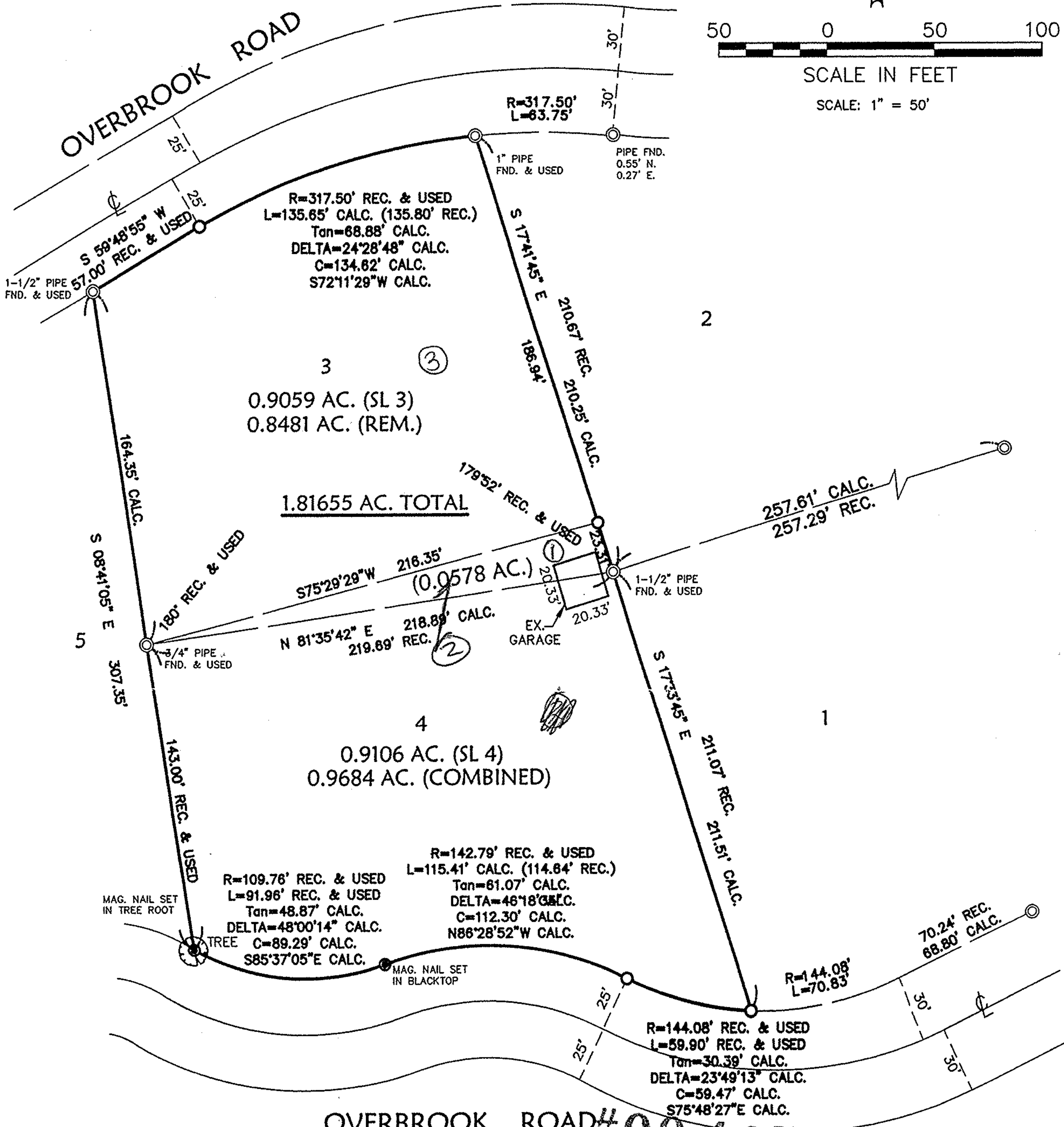




SCALE IN FEET

SCALE: 1" = 50'

OVERBROOK ROAD



1.8165 AC. TOTAL

0.9059 AC. (SL 3)
0.8481 AC. (REM.)

0.9106 AC. (SL 4)
0.9684 AC. (COMBINED)

OVERBROOK ROAD #00465

APPROVED
LORAIN CO.
MAP DEPT

DATE 6-12-00

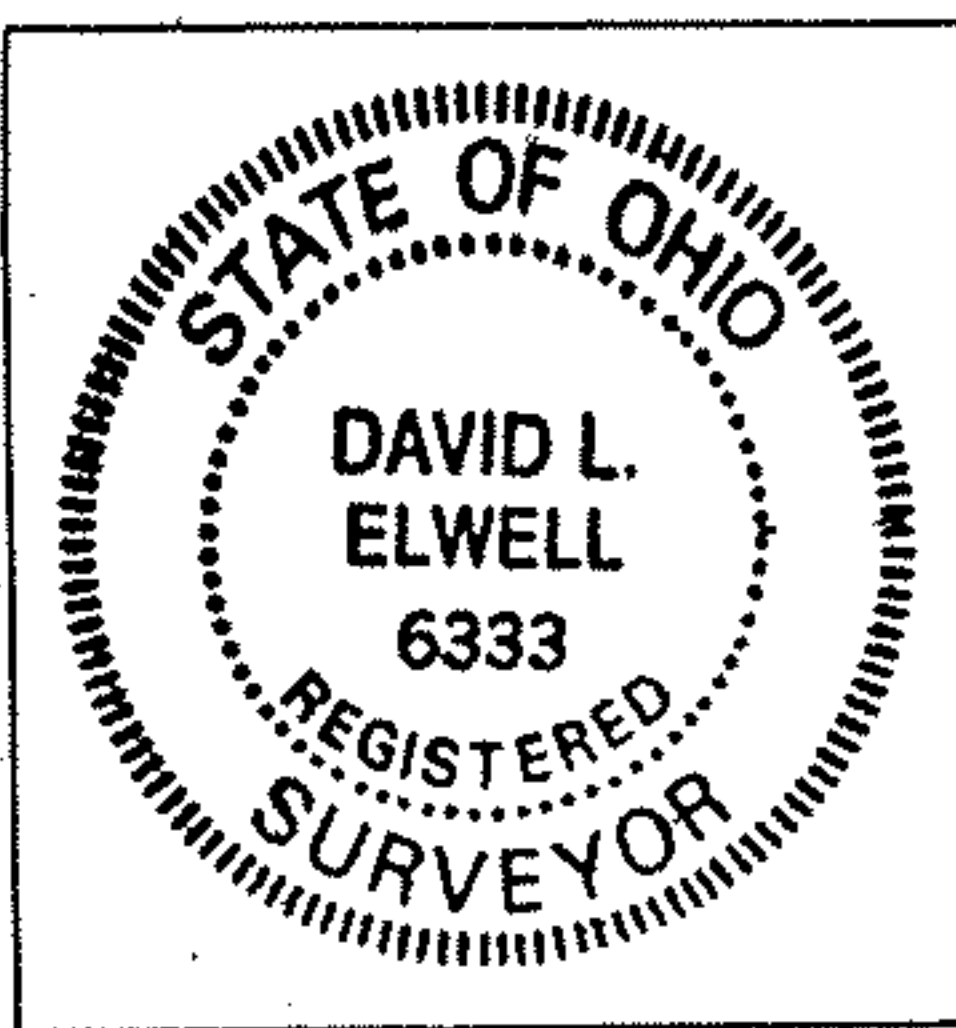
PAGE 6-67

BY J. Hatfield

DAVID L. ELWELL, REGISTERED SURVEYOR NO. 6333 * 00-00465

LEGEND

- ⊙ IRON PIN/PIPE FOUND
- 5/8" CAPPED REBAR SET
- MAGNETIC NAIL SET



KS ASSOCIATES
 424 Middle Avenue
 P.O. Box 569
 Elyria, Ohio 44036
 Phone (440) 392-6317
 Fax (440) 284-0623
 mailroom@ksassoc.com
 www.ksassoc.com

SURVEY MAP
 SUBLOTS 3 & 4 IN BLOCK "B"
 OF GULF FARMS-P.V. 10 PP. 24-25 OF PART OF
 ORIGINAL ELYRIA TOWNSHIP LOT NO. 162 - E. OF RIVER
 CITY OF ELYRIA COUNTY OF LORAIN STATE OF OHIO
 APRIL 21, 2000 - REV. - MAY 25, 2000

JOB NO. 99257-51
 DWG. NAME O-SURV01