



Scale 1" = 30 ft
Date: March 3, 2000

ASSEMBLY PLAT
FOR

GALIK BUILDING CO.

SITUATED IN THE CITY OF AVON, COUNTY OF LORAIN,
& STATE OF OHIO & KNOWN AS BEING S/L'S 12, 13, & 14
IN ARBOR ACRES SUBDIVISION, VOL. 58, PGS. 54 & 55.



APPROVALS

THIS PLAT APPROVED BY THE PLANNING COMMISSION OF
THE CITY OF AVON.
THIS _____ DAY OF _____, 2000.

PLANNING COMMISSION

THIS PLAT APPROVED BY THE DIRECTOR OF ENGINEERING OF
THE CITY OF AVON.
THIS _____ DAY OF _____, 2000.

ENGINEER

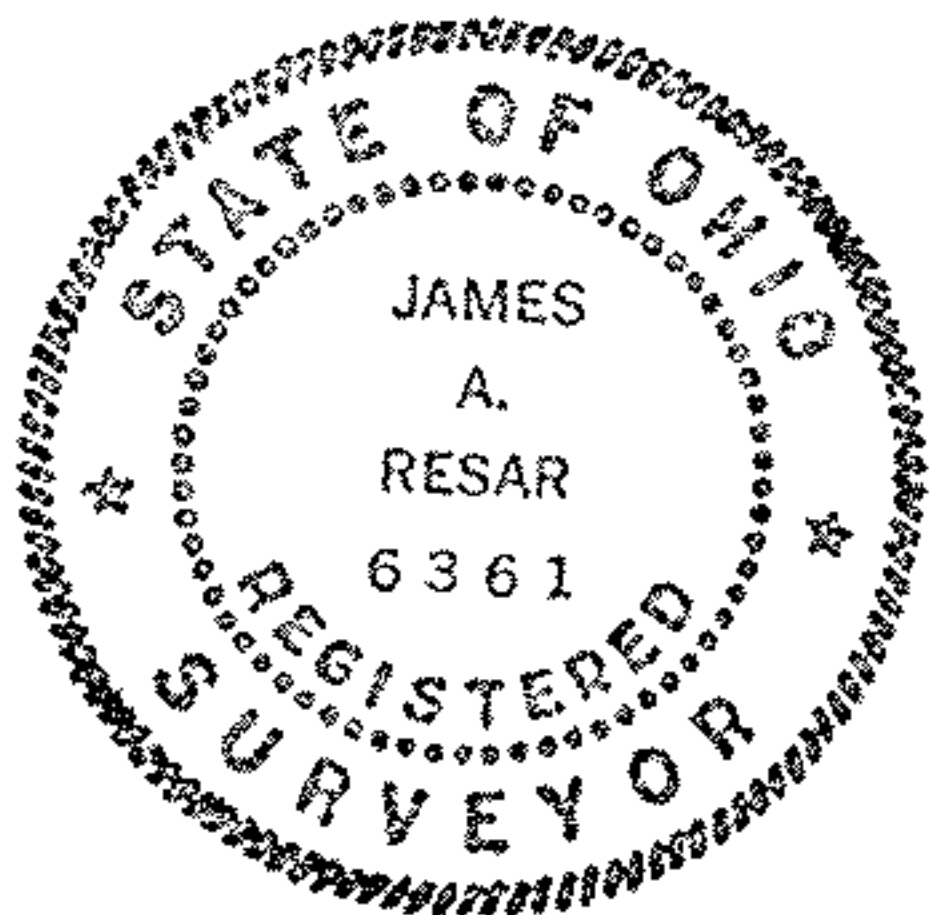
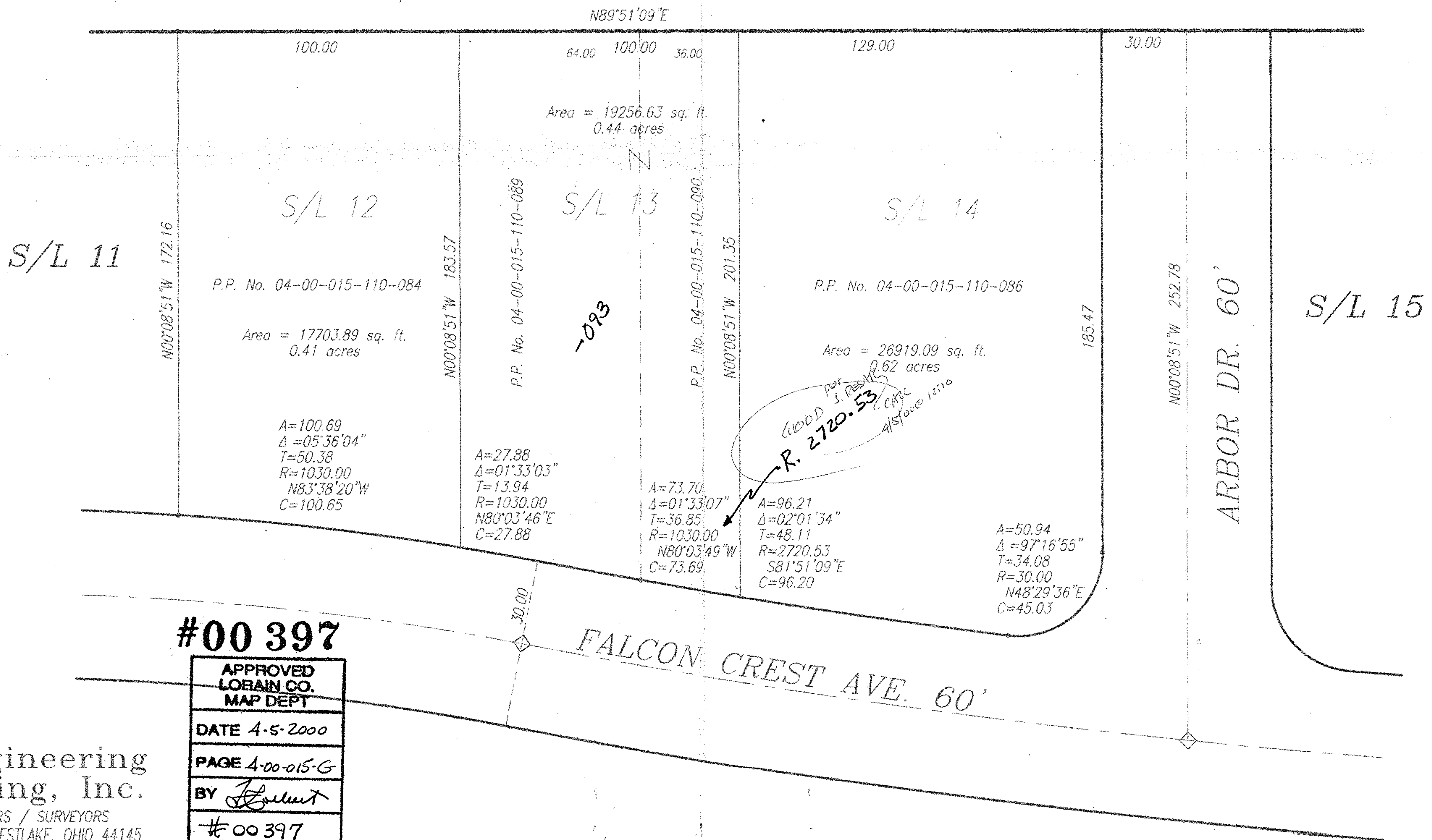
CERTIFICATION

DIMENSIONS SHOWN ON THIS PLAT ARE EXPRESSED IN FEET AND DECIMAL
PARTS THEREOF. ALL BEARINGS ARE TO AN ASSUMED MERIDIAN AND ARE
USED TO INDICATE ANGLES ONLY. PERMANENT MONUMENTS WERE FOUND OR
SET AT ALL POINTS INDICATED HEREON. ALL OF WHICH I CERTIFY TO BE
CORRECT.

J.A.R. ENGINEERING
& SURVEYING, INC.
24629 DETROIT ROAD
WESTLAKE, OH. 44145

DATE: MARCH, 2000 JAMES A. RESAR, P.E., P.S.
REG. OHIO SURVEYOR #6361

PPN 04-00-015-110-061
MUELLER'S QUALITY CONST., INC.
VOL. 1141, PG. 309



#00 397

APPROVED LORAIN CO. MAP DEPT
DATE 4-5-2000
PAGE 4-00-015-G
BY <i>J. Resar</i>
#00 397

J.A.R. Engineering
& Surveying, Inc.
CONSULTING ENGINEERS / SURVEYORS
24629 DETROIT ROAD WESTLAKE, OHIO 44145
Phone: (216)-871-8345

73.70
27.88
45.82