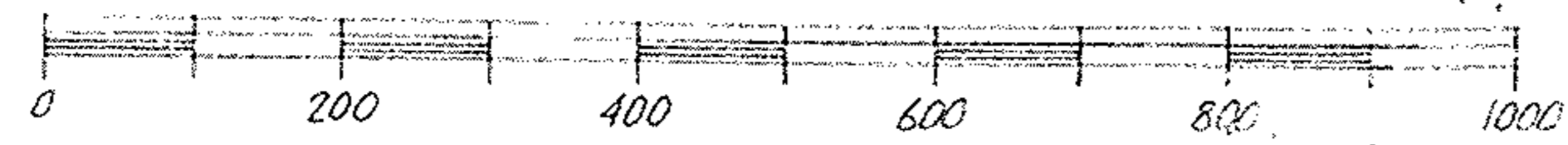
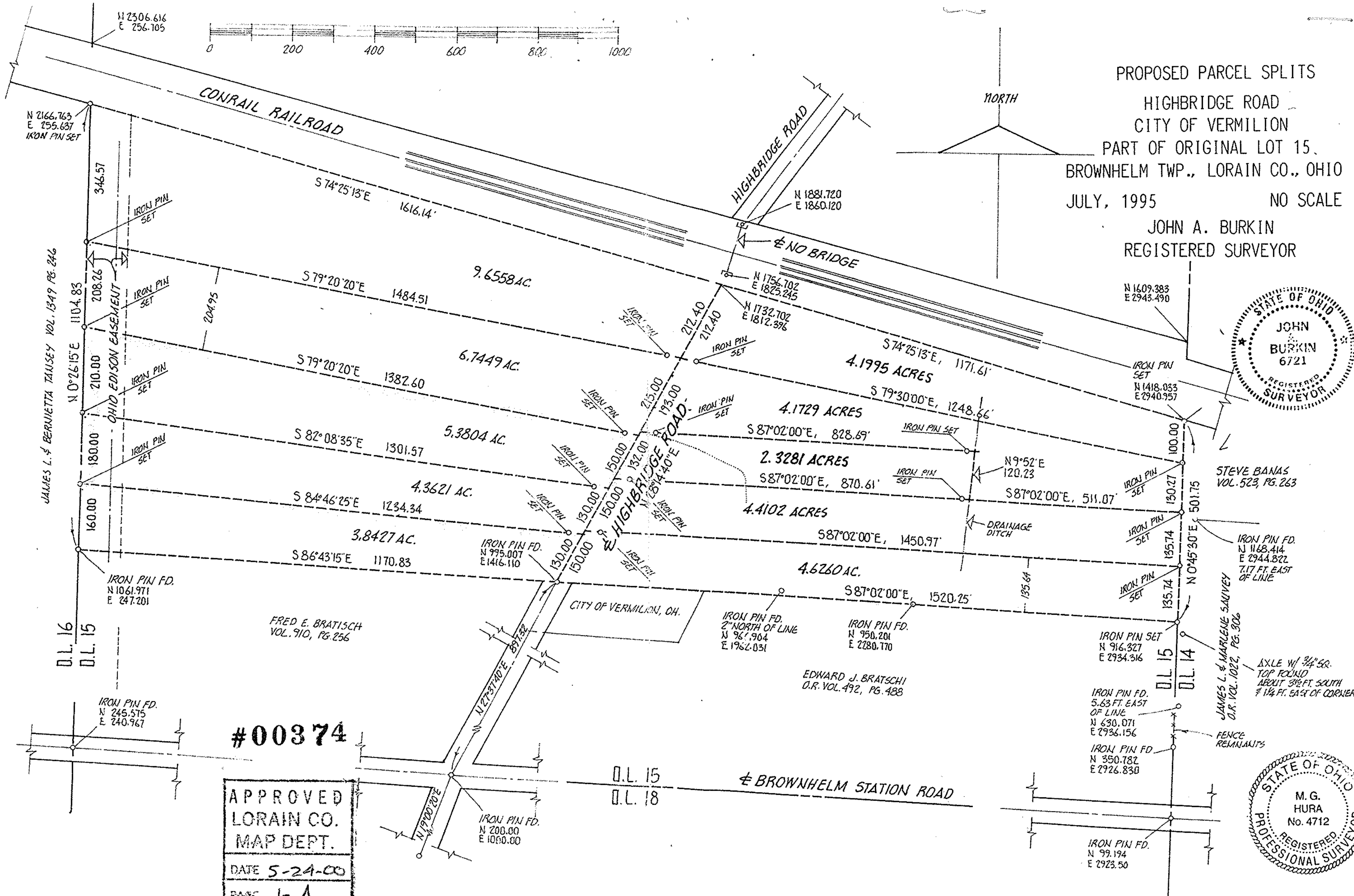
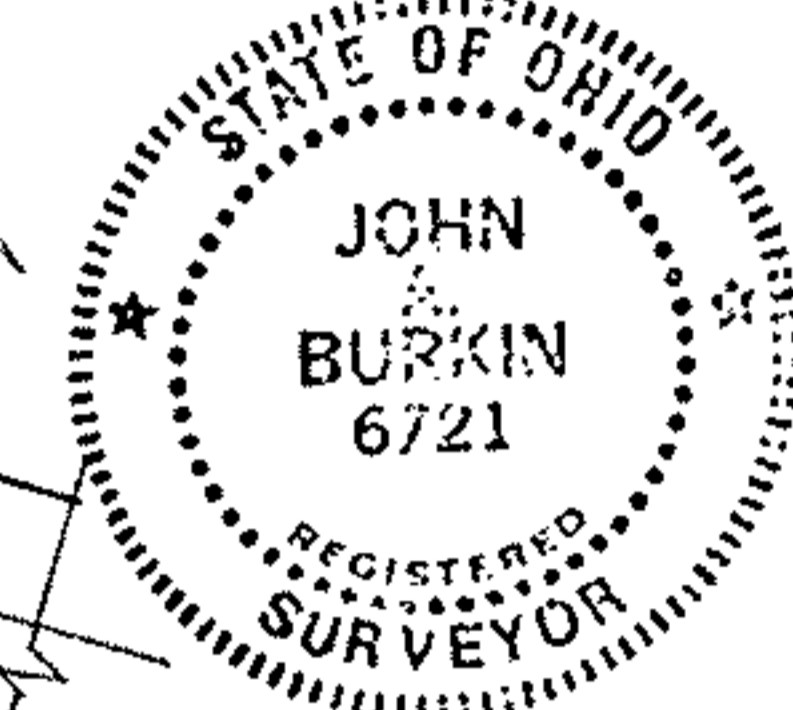


01-00-015-000-039, 017, 013, 014, 021
120, 110, 130, 000-010-0010
019, 018, 023, 022



PROPOSED PARCEL SPLITS
HIGHBRIDGE ROAD
CITY OF VERMILION
PART OF ORIGINAL LOT 15,
BROWNHELM TWP., LORAIN CO., OHIO
JULY, 1995 NO SCALE
JOHN A. BURKIN
REGISTERED SURVEYOR



#00374

APPROVED
LORAIN CO.
MAP DEPT.
DATE 5-24-00
PAGE 1-A
BY T. McNeil
00374



STEVE BANAS
VOL. 523, PG. 263

IRON PIN FD.
N 1168.414
E 2944.822
7.17 FT. EAST
OF LINE

JAMES L. & MARLENE SAUVEY
D.R. VOL. 1022, PG. 306

FENCE
REMAINANTS

EDWARD J. BRATSCHI
D.R. VOL. 492, PG. 488

IRON PIN FD.
2" NORTH OF LINE
N 961.904
E 1952.031

IRON PIN FD.
N 995.007
E 1416.110

FRED E. BRATISCH
VOL. 910, PG. 256

IRON PIN FD.
N 1061.971
E 247.201

IRON PIN FD.
5.63 FT. EAST
OF LINE
N 630.071
E 2936.156

IRON PIN FD.
N 350.782
E 2926.830

IRON PIN FD.
N 99.194
E 2923.50

IRON PIN SET
N 1609.383
E 2943.490

IRON PIN SET
N 1418.033
E 2940.957

IRON PIN SET
N 9°52' E
120.23

IRON PIN SET

IRON PIN SET
N 916.327
E 2934.316

IRON PIN SET
N 1756.702
E 1825.245

IRON PIN SET
N 1732.702
E 1812.396

IRON PIN SET

IRON PIN SET

IRON PIN SET

IRON PIN SET

IRON PIN SET

IRON PIN SET

IRON PIN SET

IRON PIN SET

IRON PIN SET

IRON PIN SET

IRON PIN SET

IRON PIN SET

IRON PIN SET