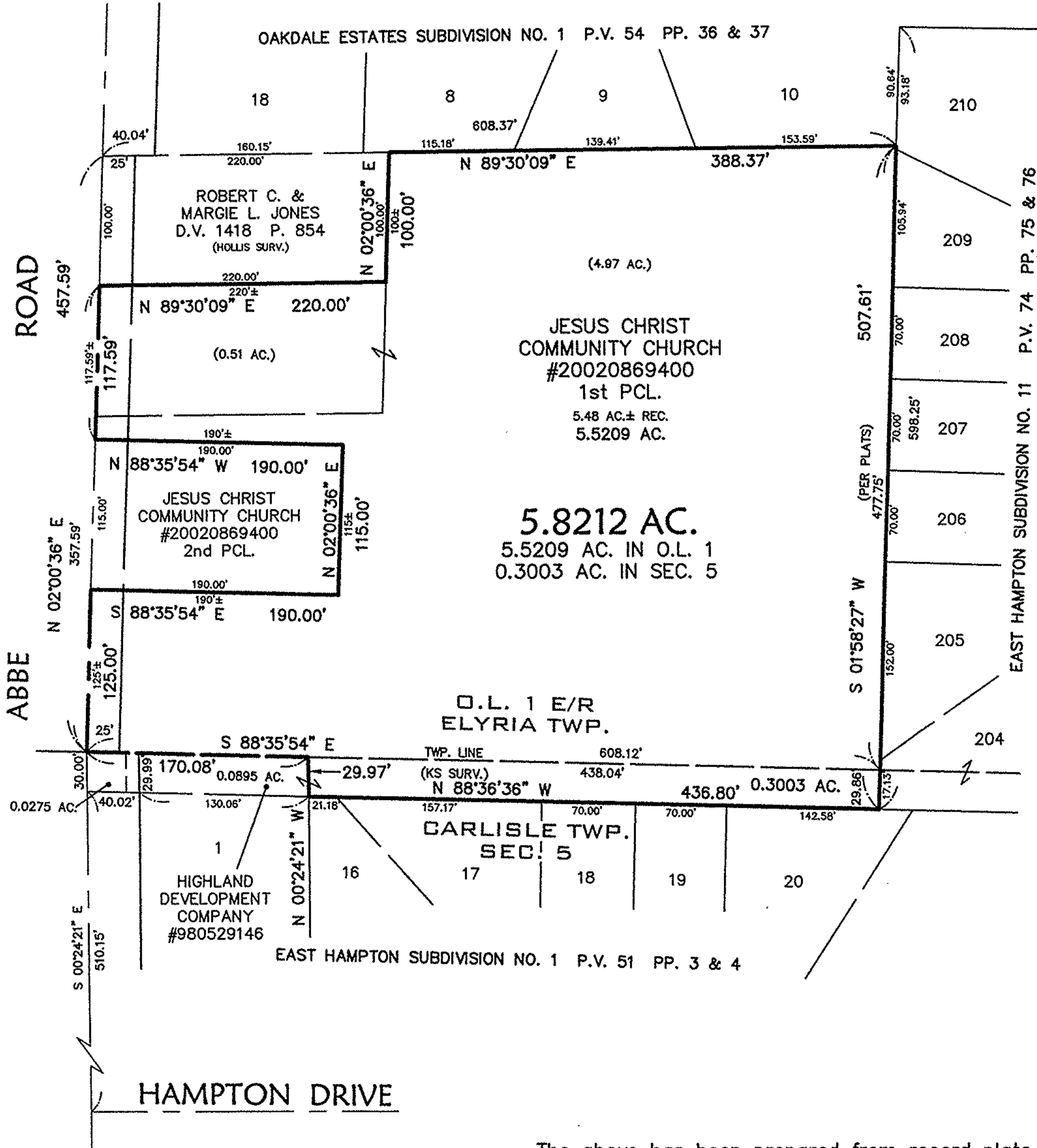
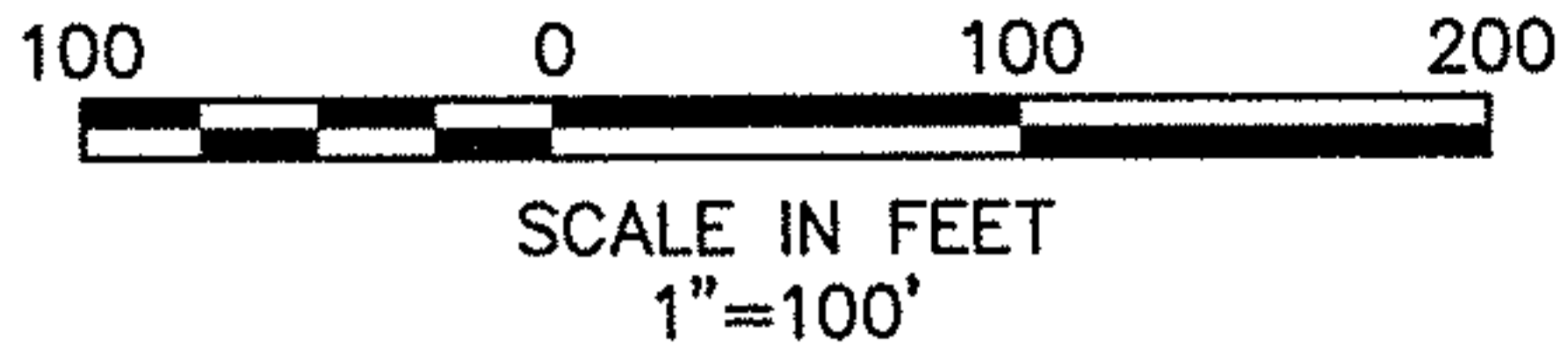




The bearings cited are referenced to those in East Hampton Subdivision No. 11.

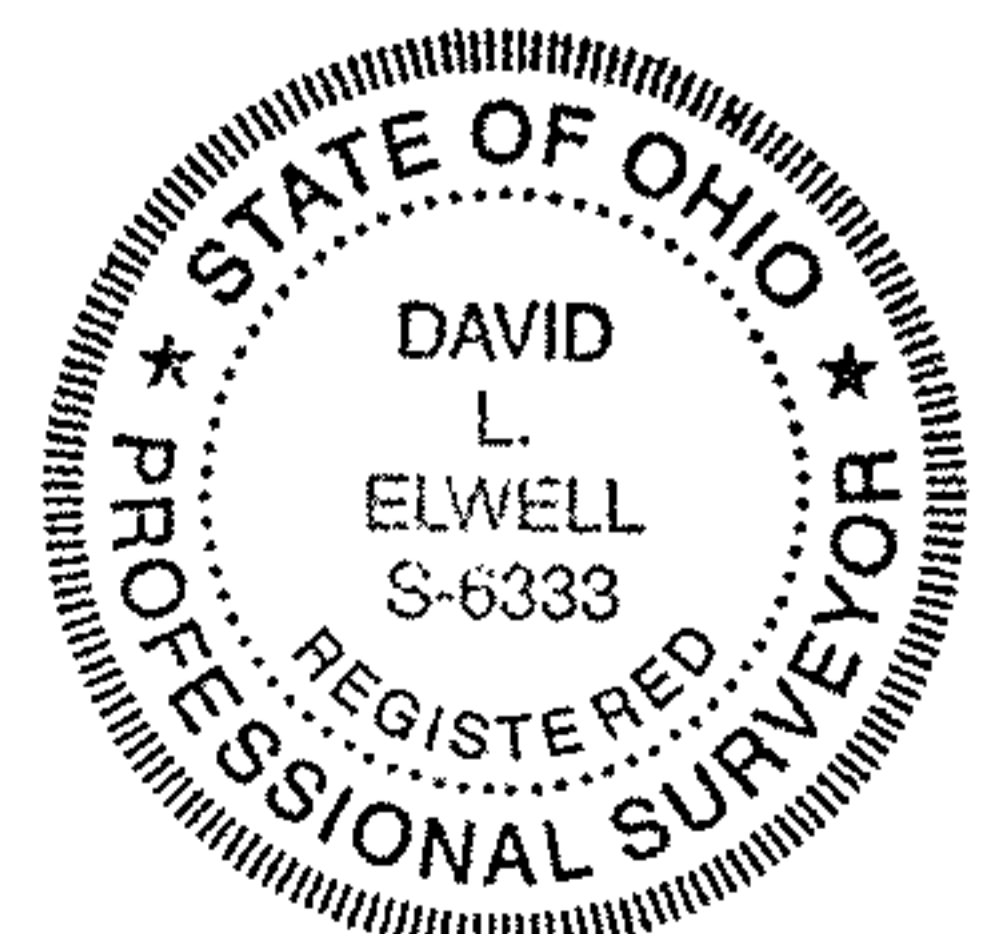


The above has been prepared from record plats, the deeds cited, and from a survey by KS Associates, Inc. Engineers and Surveyors for that part in Carlisle Township and the plats cited only. The parcels in Deed Volume 1418, Page 854 and Instrument No. 20020869400 were not surveyed except where abutting the referenced plats.

No 01986  
 RECEIVED  
 LORAIN CO.  
 MAY 2005  
 DATE 8-22-05  
 PAGE 10-00-005-C  
 BY UHAFIELD  
 #05-01986

**PARCEL COMBINATION MAP**

PART OF LOT No. 1 EAST OF BLACK RIVER  
 and  
 PART OF CARLISLE TOWNSHIP SECTION No. 5  
 CITY OF ELYRIA COUNTY OF LORAIN STATE OF OHIO  
 DATE: MAY 27, 2005  
 REVISED: JULY 28, 2005



*David L. Elwell*  
 DAVID L. ELWELL, REGISTERED SURVEYOR NO. 6333

