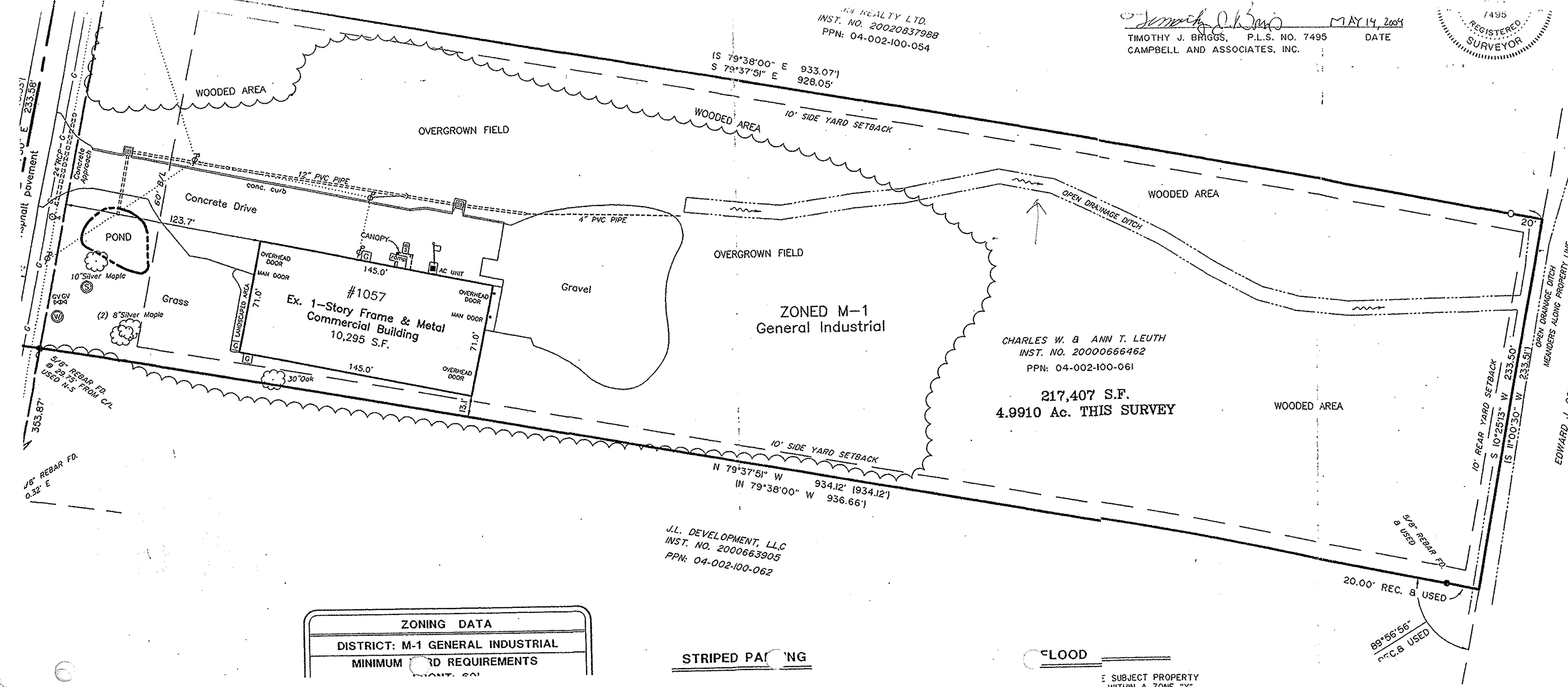


RE REALTY LTD.
 INST. NO. 20020837988
 PPN: 04-002-100-054

Timothy J. Briggs
 TIMOTHY J. BRIGGS, P.L.S. NO. 7495
 CAMPBELL AND ASSOCIATES, INC. DATE MAY 14, 2009



EL
 CE
 RE
 a



ZONING DATA	
DISTRICT:	M-1 GENERAL INDUSTRIAL
MINIMUM	RD REQUIREMENTS
FRONT:	60'

STRIPED PAINTING

FLOOD

THE SUBJECT PROPERTY WITHIN A 70' ZONE "V"