

Legend

- Iron Pipe Found
- ⊙ Power Pole
- ⊙ Magnetic PK Spike Set
- ▲ 5/8" Iron Pin Set with Cap Stamped "Kelser 7871"



BEARINGS ARE ASSUMED.
ERROR OF CLOSURE IS LESS THAN 1:10,000.

SCALE 1"=150'



DATE:	8/9/04
JOB NO.:	04-3713

-001
DOVIN LAND COMPANY, LLC
41.66 ACRES
INS. 20010744979

PLAT OF BOUNDARY SURVEY
THOMAS & VIRGINIA J. CLEMENTO
PART OF ORIGINAL LOT 56
TOWNSHIP OF PITTSFIELD, LORAIN COUNTY, OHIO

-013
T. & V. CLEMENTO
22.27 ACRES
D.V. 1313, PG. 585

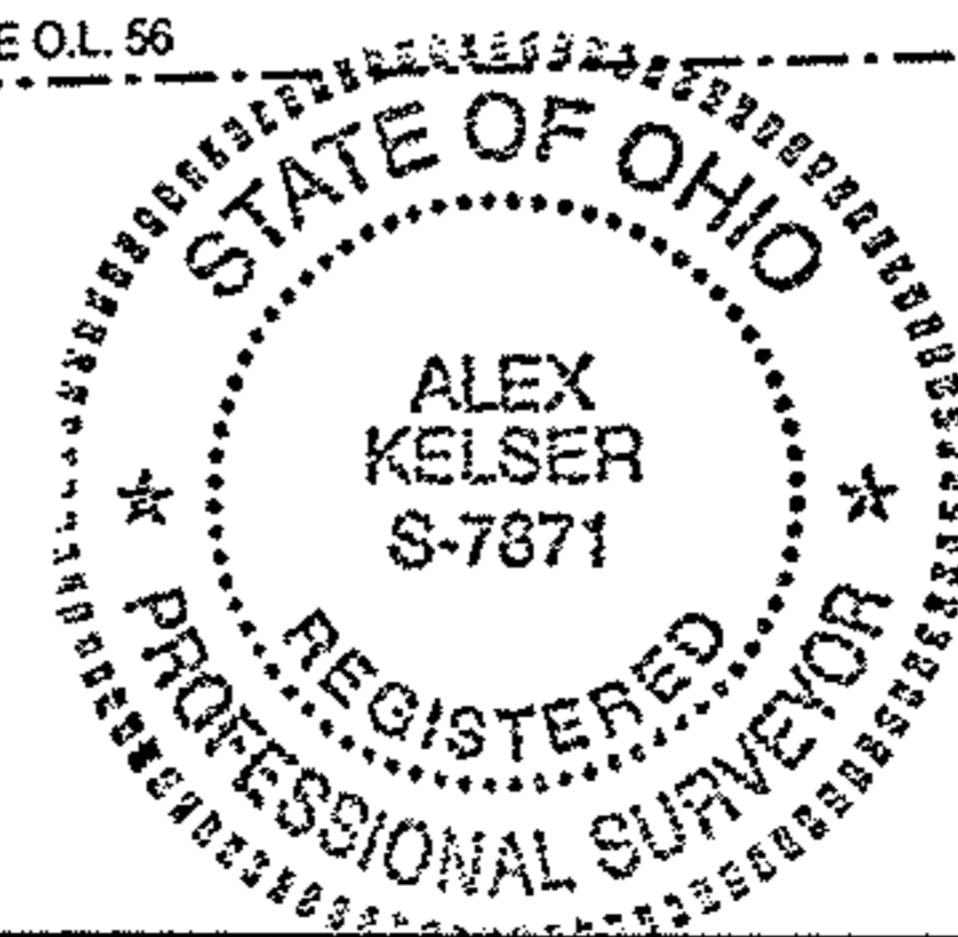
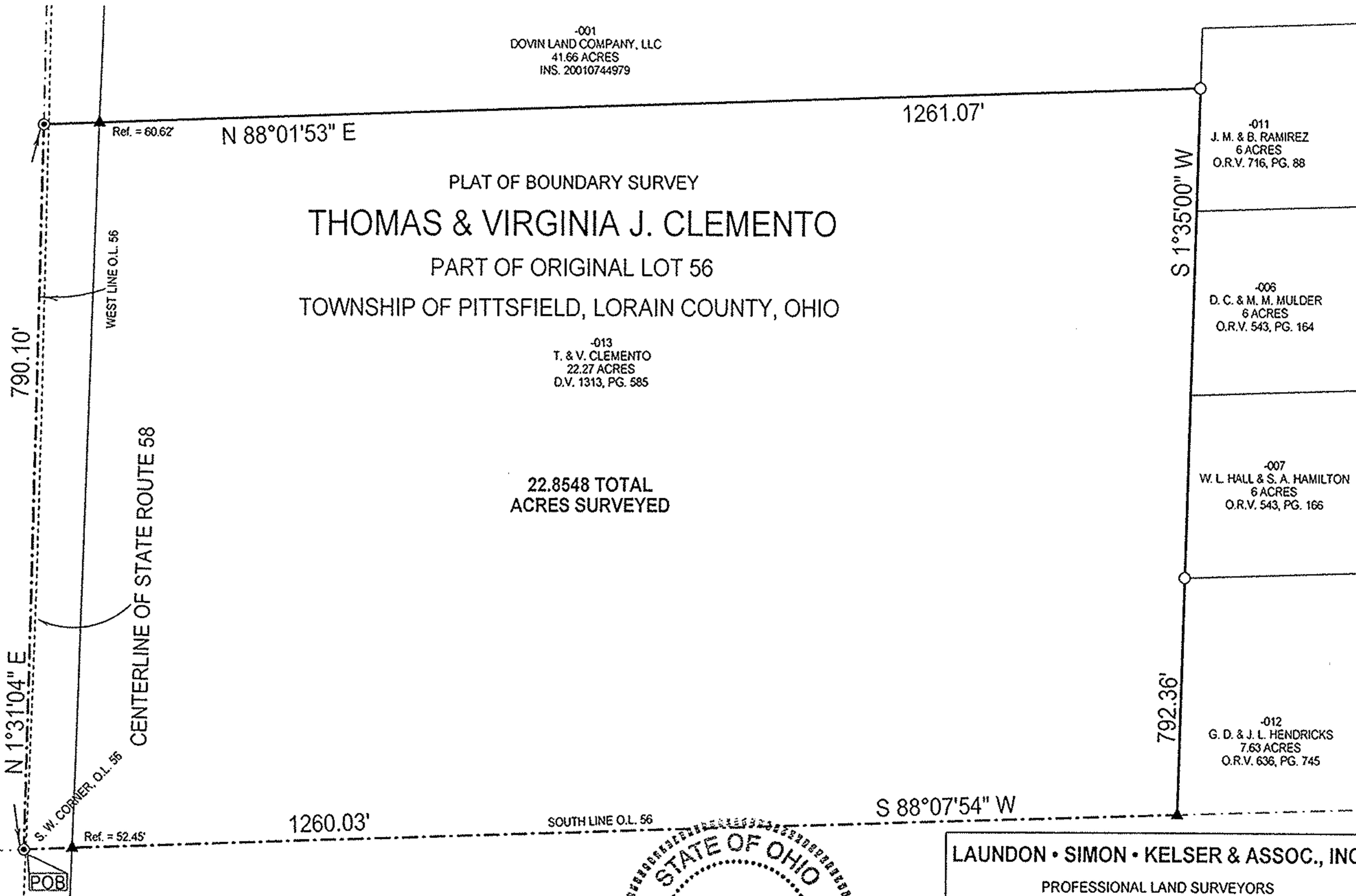
22.8548 TOTAL
ACRES SURVEYED

-011
J. M. & B. RAMIREZ
6 ACRES
O.R.V. 716, PG. 88

-006
D. C. & M. M. MULDER
6 ACRES
O.R.V. 543, PG. 164

-007
W. L. HALL & S. A. HAMILTON
6 ACRES
O.R.V. 543, PG. 165

-012
G. D. & J. L. HENDRICKS
7.63 ACRES
O.R.V. 636, PG. 745



LAUNDON • SIMON • KELSER & ASSOC., INC.
PROFESSIONAL LAND SURVEYORS
110 MIDDLE AVE. • ELYRIA, OHIO • 44035
PHONE (440) 322-7625

Alex Kelser
Alex Kelser

RLS #7871