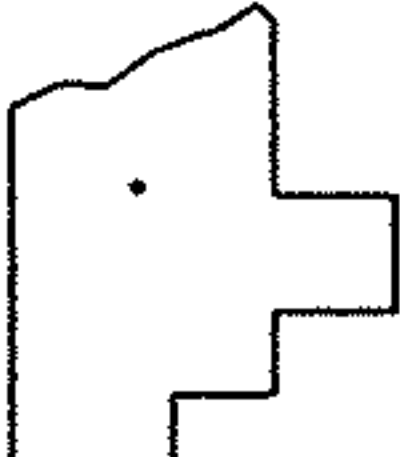
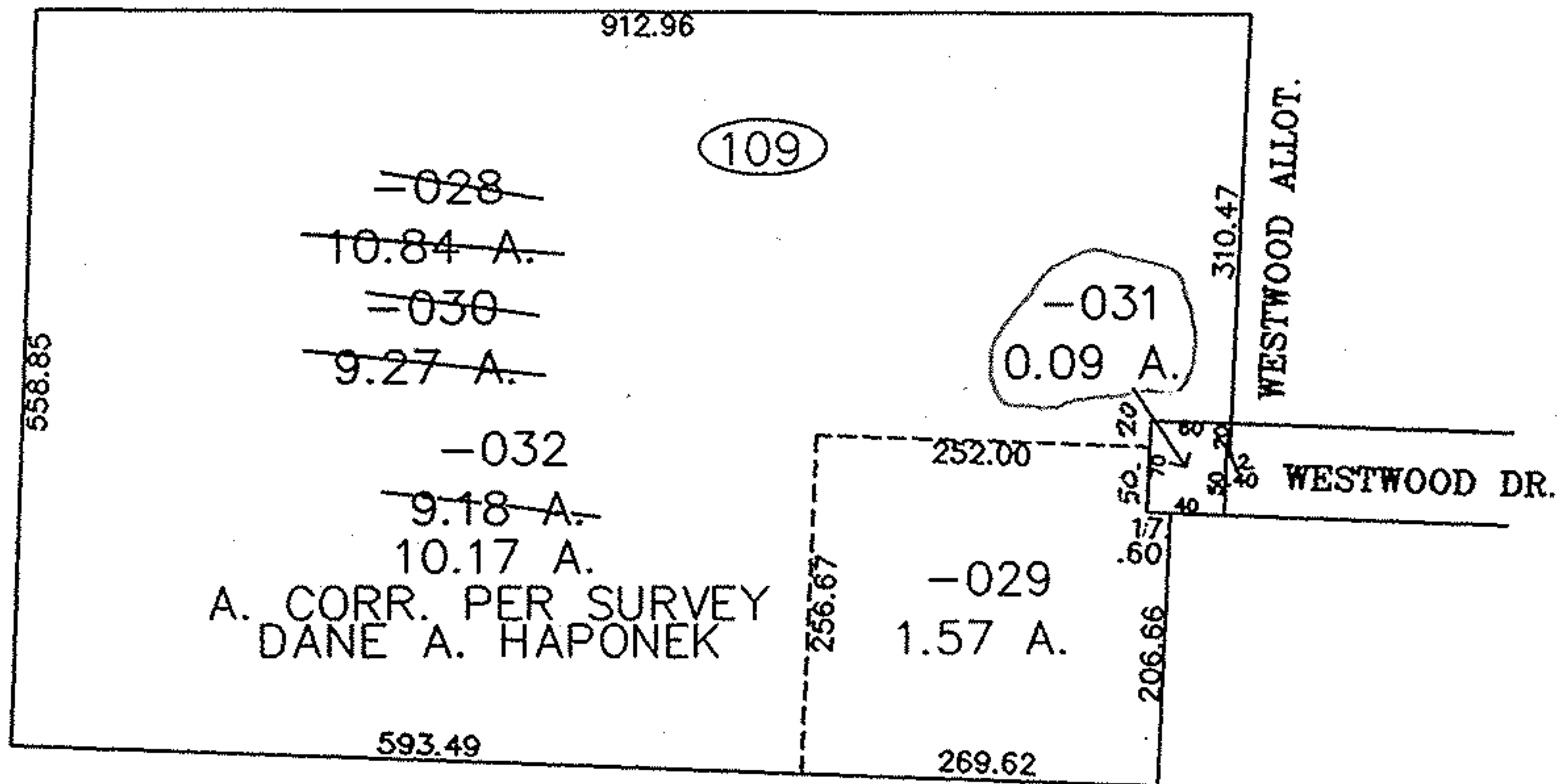
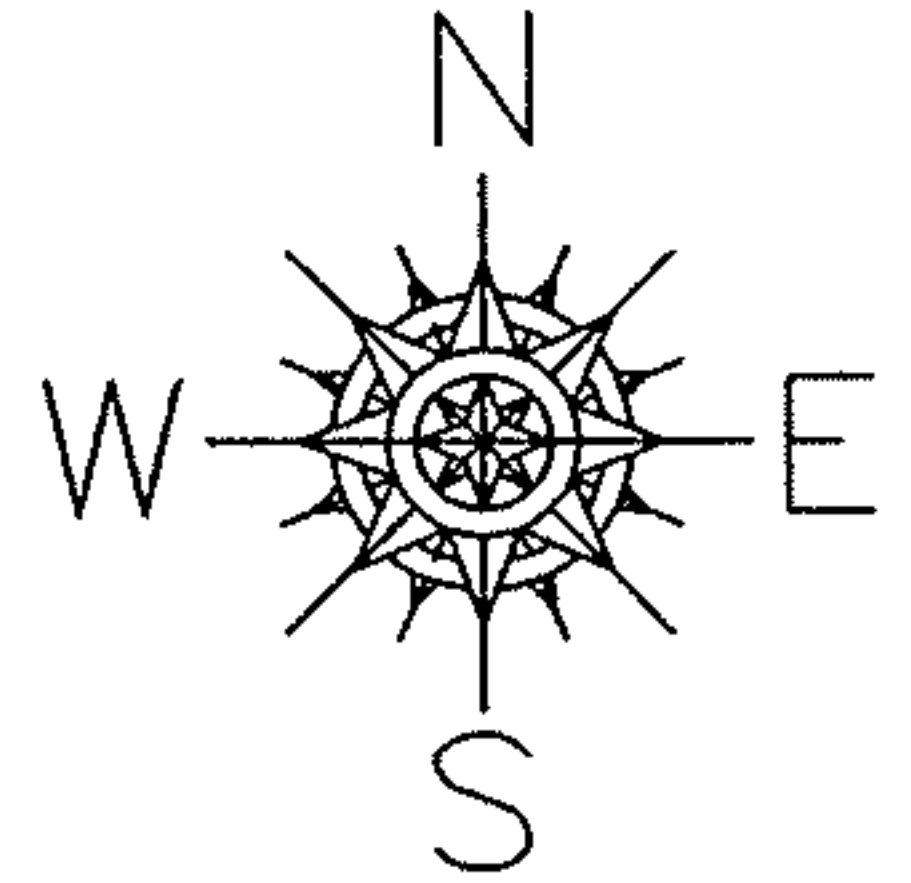


PARENT PARCEL: 07-00-027-109-028

CHILD PARCEL: 07-00-027-109-029 thru -032

STARTING POINT: RIGHT-A-WAY LINE OF WESTWOOD DR. & N.W. CORNER OF S/L 27

NO. 00715



SPLITS/DEEDS PROCESSED
 LORAIN COUNTY TAX MAP DEPARTMENT
 226 MIDDLE AVE. ELYRIA, OHIO

SURVEYED BY: DANE A. HAPONER
 CLOSURE: 0.01 : 10,000
 MAP PAGE(S): 7-00-027-D
 APPROVED BY: JAH DATE: 4-16-01
 SCALE: 1" = 200' PRIOR INSTRUMENT: DV 1420/36