

06-24-006-000-014,045

#19564

APPROVED
LORAIN CO.
MAP DEPT.
DATE 9-20-91
PAGE 6-130
BY C.E. FRANKS
VOID AFTER 19564

13.693 AC

[(2/3) 33.678 AC = 11.226 AC]

ELYRIA INDUSTRIAL RESOURCES CO.
D.V. 1386 P. 34 PCL. 2

(G.B.M. COMPANY 33.678 AC.)

RAY BIDINGER & J. WILLIAM McCRAY D.V. 1386 P. 31 PCL. 2

19.985 AC

22.452 AC

ROBERT J. MILLER
2.296 AC.
D.V. 1382 P. 852

RAY BIDINGER & J. WILLIAM McCRAY
D.V. 1386 P. 36

2.467 AC

ELYRIA INDUSTRIAL RESOURCES CO. 22.718 AC.
D.V. 1280 P. 523 PCL. # 2

(7.5249 AC.)

(2.3424 AC)

(1.139 A.)

(1.139 A.)

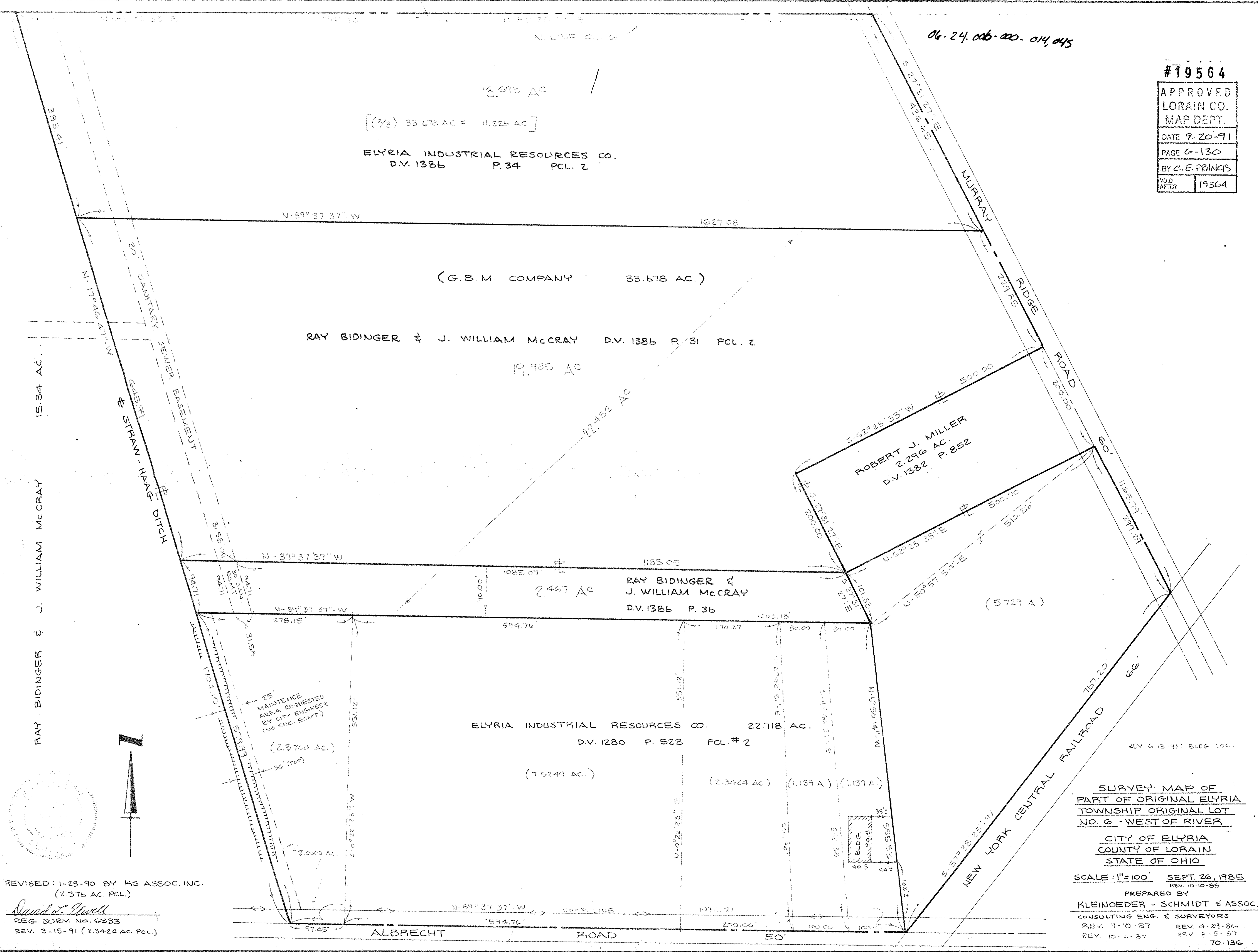
SURVEY MAP OF
PART OF ORIGINAL ELYRIA
TOWNSHIP ORIGINAL LOT
NO. 6 - WEST OF RIVER

CITY OF ELYRIA
COUNTY OF LORAIN
STATE OF OHIO

SCALE: 1"=100' SEPT. 26, 1985
REV. 10-10-85

PREPARED BY
KLEINOEDER - SCHMIDT & ASSOC.

CONSULTING ENG. & SURVEYORS
REV. 9-10-87 REV. 4-29-86
REV. 10-6-87 REV. 8-5-87
70-136



REVISED: 1-23-90 BY KS ASSOC. INC.
(2.376 AC. PCL.)

David L. Stowell
REG. SURV. NO. 6333
REV. 3-15-91 (2.3424 AC. PCL.)

