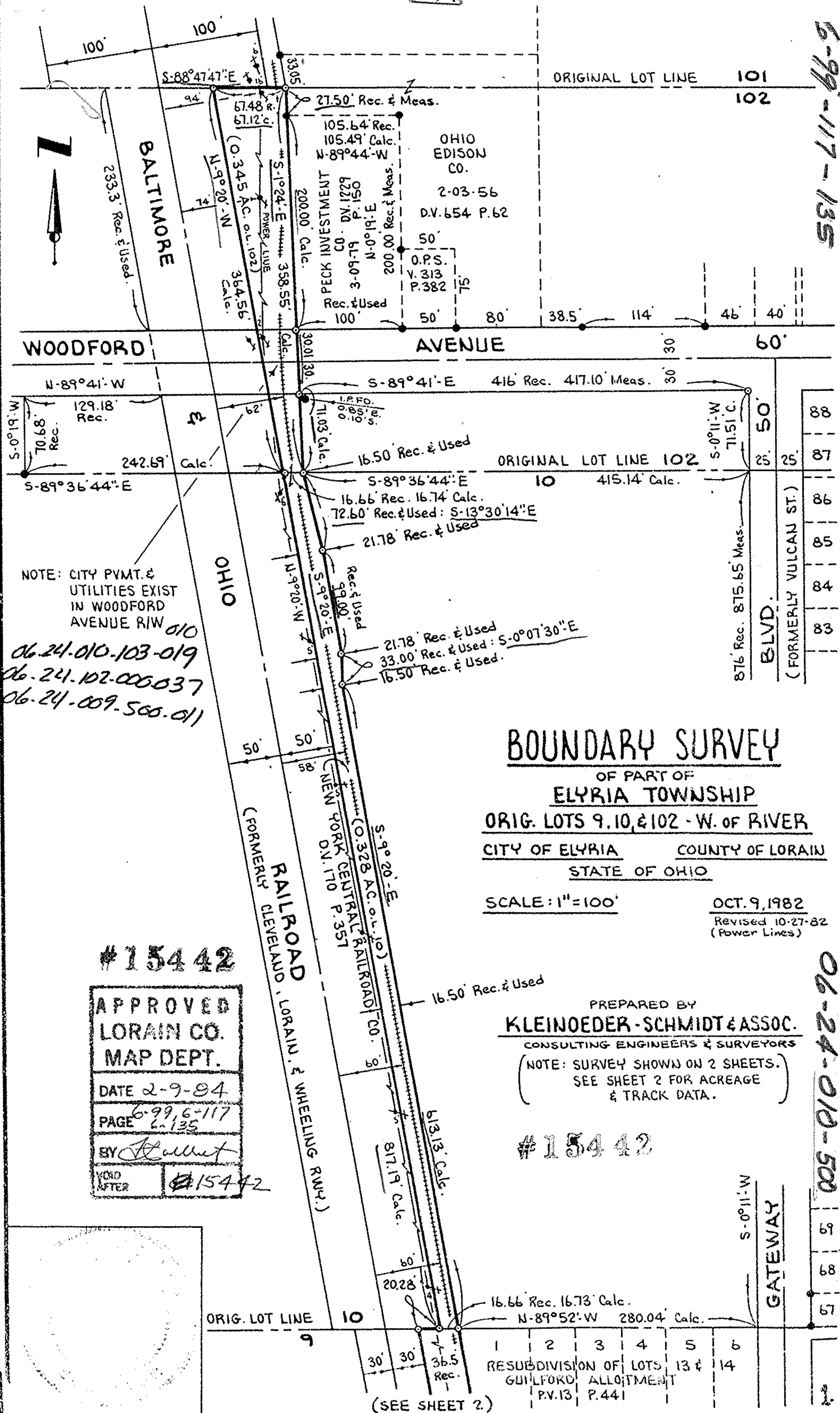


6-99-117-135

06-24-010-500-01



NOTE: CITY PVMT. & UTILITIES EXIST IN WOODFORD AVENUE R/W
 06-24-010-103-019
 06-24-102-000-037
 06-24-009-500-011

BOUNDARY SURVEY

OF PART OF
ELYRIA TOWNSHIP
 ORIG. LOTS 9, 10, & 102 - W. OF RIVER
 CITY OF ELYRIA COUNTY OF LORAIN
 STATE OF OHIO

SCALE: 1" = 100'
 OCT. 9, 1982
 Revised 10-27-82
 (Power Lines)

PREPARED BY
KLEINOEDER-SCHMIDT & ASSOC.
 CONSULTING ENGINEERS & SURVEYORS

(NOTE: SURVEY SHOWN ON 2 SHEETS.
 SEE SHEET 2 FOR ACREAGE
 & TRACK DATA.)

#15442

#15442

APPROVED	
LORAIN CO.	
MAP DEPT.	
DATE	2-9-84
PAGE	6-99, 6-117 6-135
BY	<i>[Signature]</i>
VOID AFTER	#15442

RESUBDIVISION OF LOTS 13 & 14
 GUILFORD ALLOTMENT
 P.V.13 P.441

(SEE SHEET 2.)