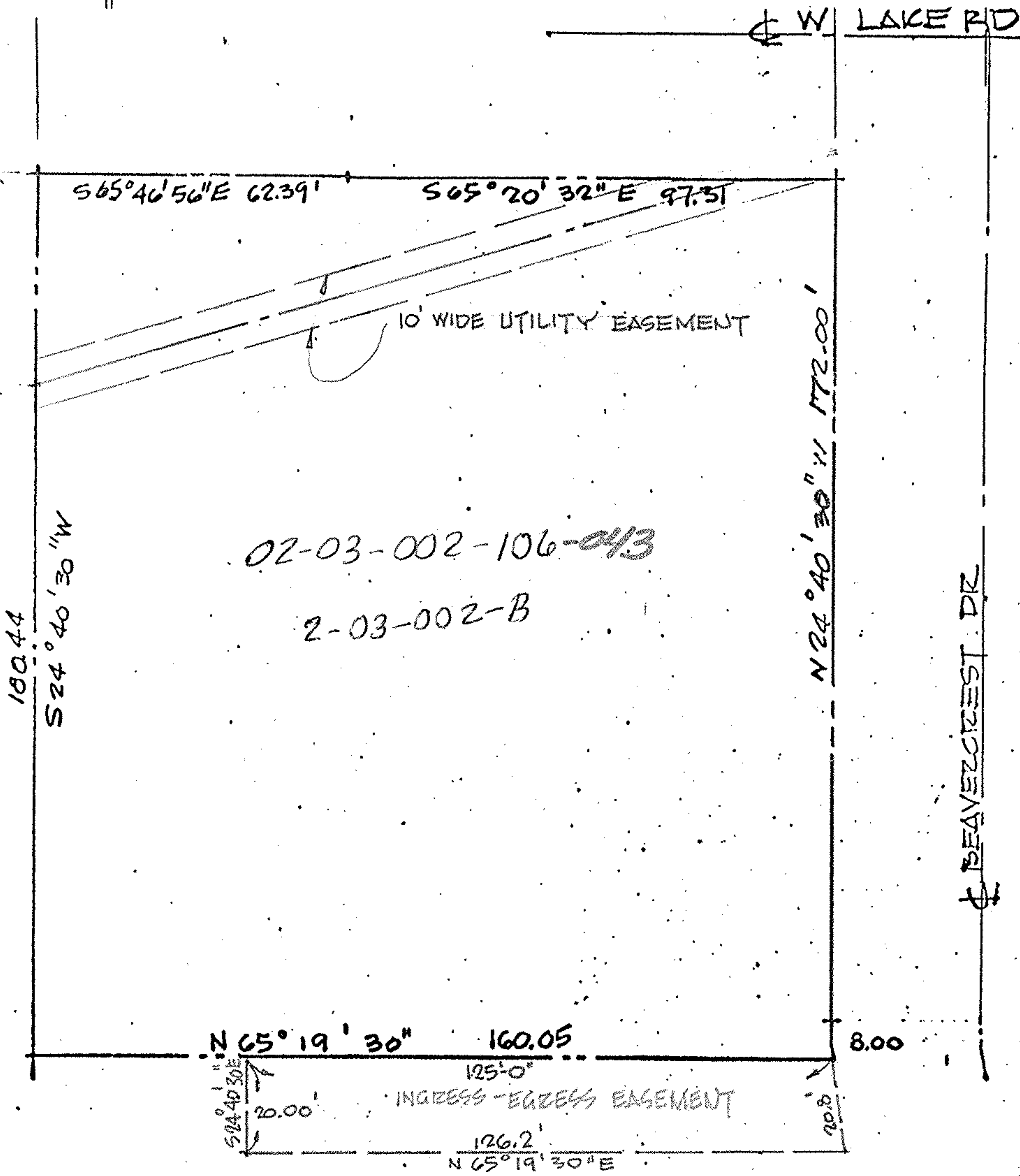


2-03-002-B



02-03-002-106-013

2-03-002-B

SITE PLAN
1" = 30'-0"



APPROVED BY THE LORAIN CITY PLANNING COMMISSION..... NO PLAT REQUIRED

Tony Rodgers
SECRETARY LORAIN CITY PLANNING COMMISSION

Situated in the City of Lorain, County of Lorain, and State of Ohio, and known as part of Original Lot No. 2, Tract No. 3 of Black River Township, now the City of Lorain, and more definitely described as follows:

Beginning at the intersection of the west line of Beavercrest Drive and the south line of Lake Road or West Erie Avenue; Thence S 65° 20' 32" W along the south line of Lake Road, a distance of 97.31 feet to a point; Thence S 65° 46' 56" W along the South line of Lake Road a distance of 62.39 feet to a point; Thence S 24° 40' 30" E a distance of 180.44 feet to a point; Thence N 65° 19' 30" E a distance of 160.05 feet to a point of intersection with the west line of Beavercrest Drive; Thence in a northerly and westerly direction following the arc of a curve along the west line of Beavercrest Drive a distance of 8.00 feet to a point; Thence N 24° 40' 30" W along the west line of Beavercrest Drive a distance of 172.00 feet to the principal place of beginning and containing with its' bounds 0.661 acres but subject to all legal highways.