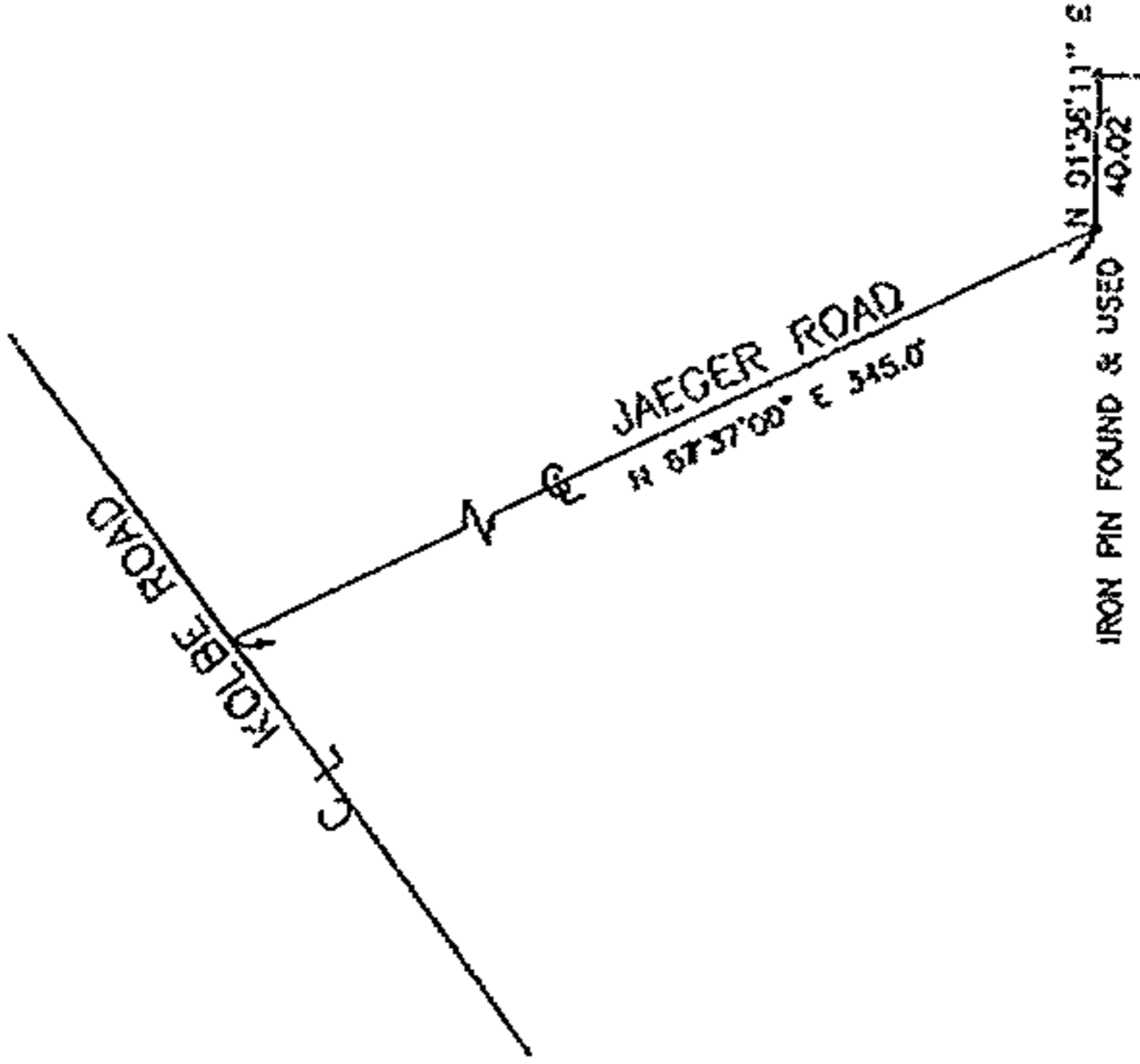


02-02-010-000-039



Scale 1" = 100'

- IRON PIN OR PIPE FOUND
- IRON PIN SET OR TO BE SET

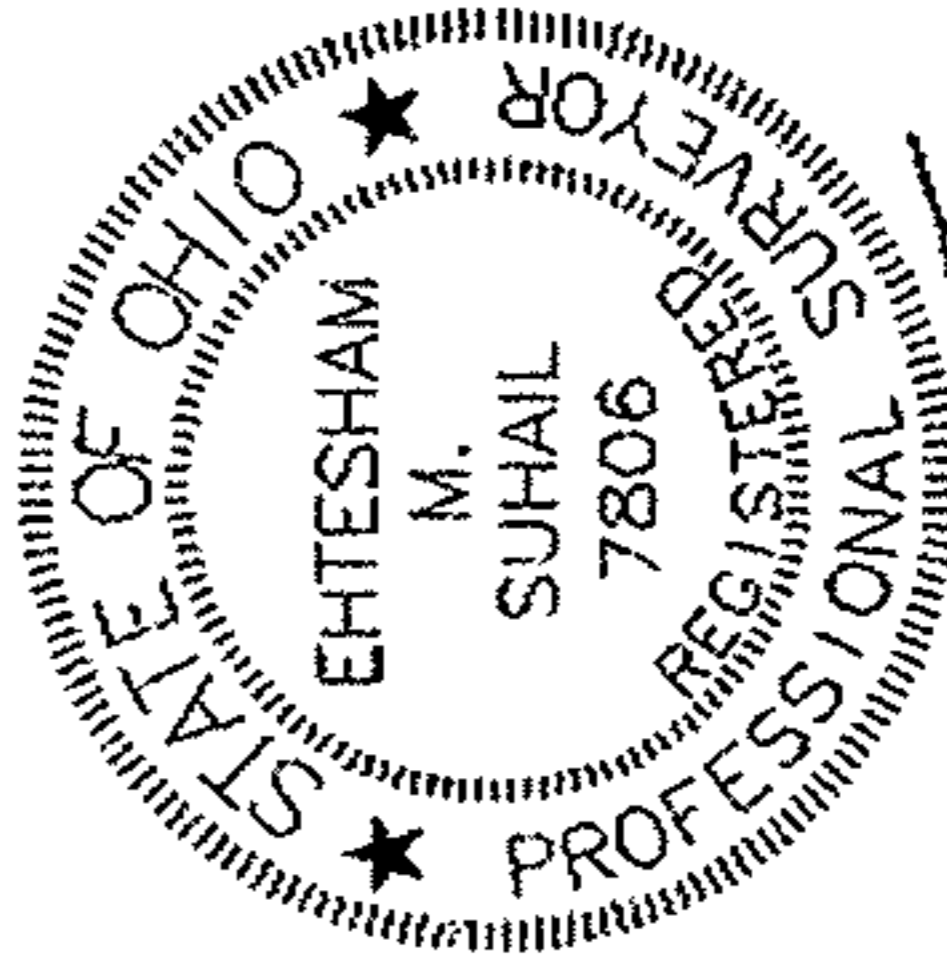
**APPROVED**

AS TO DESCRIPTION ONLY

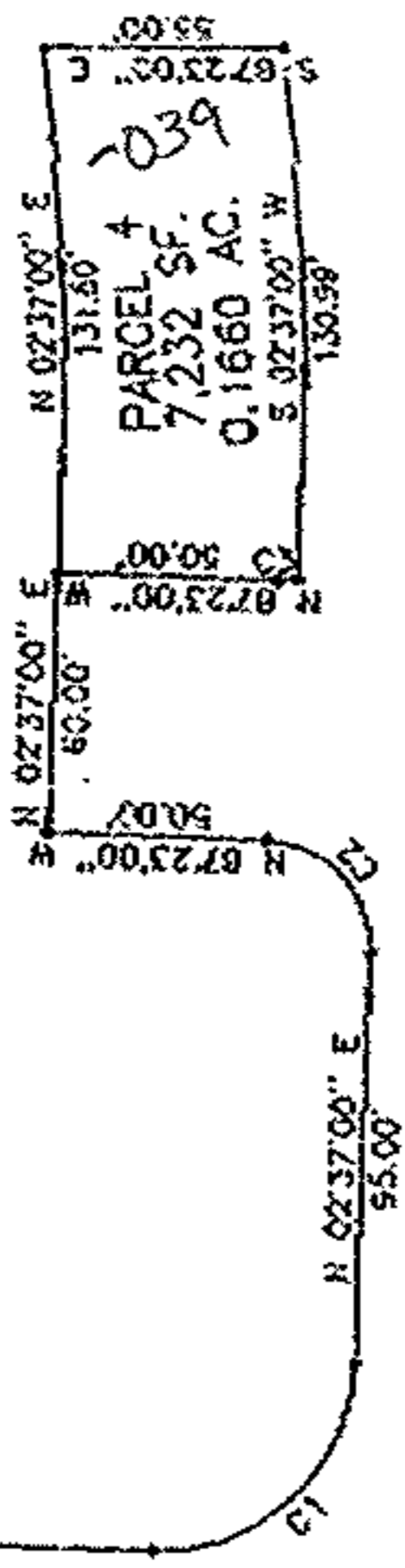
Date: October 10, 2000

Per: Kimberly Hosker  
 City of Lorain  
 Engineering Dept.

NUMBER	LC	T	R	L	LC
C1	50'00"00"	N 47°37'00" E	42.00	45.00	70.69 63.84
C2	50'00"00"	N 42°23'00" W	25.00	25.00	39.27 25.35
C3	11'32'15"	S 86°50'53" W	2.53	25.00	5.03 5.03



EHTESHAM M. SUHAIL



APPROVED BY THE LORAIN CITY PLANNING  
 COMMISSION..... NO PLAT REQUIRED

*William E. Sells* 10-11-00  
 SECRETARY LORAIN CITY PLANNING COMMISSION

DRAWN BY:	RN	DATE:	OCT. 05, 2000
CHECKED BY:	HS	DRAWING NO.:	PLAT 4
JOB NO.:	99165	SHEET	1 of 1

**Suhail & Suhail, Inc.**  
 Consulting Engineers & Surveyors

25000 Great Northern Corporate Center  
 Suite 300

North Olmsted, Ohio 44070

(440) 734-1826 Fax: (440) 734-2940