

02-02-010-000-038



Scale 1" = 100'

KOLBE ROAD

N 67° 37' E
E 345.0'

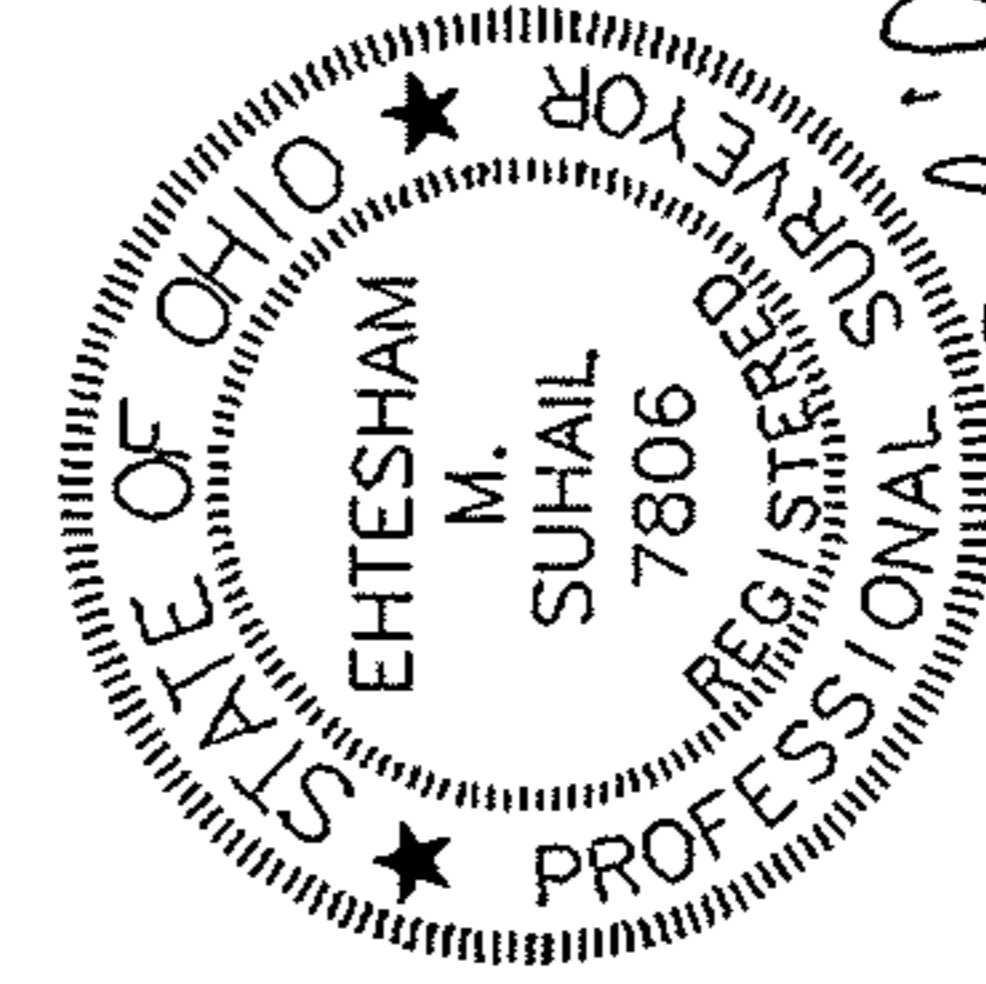
JAEGER ROAD

IRON PIN FOUND & USED

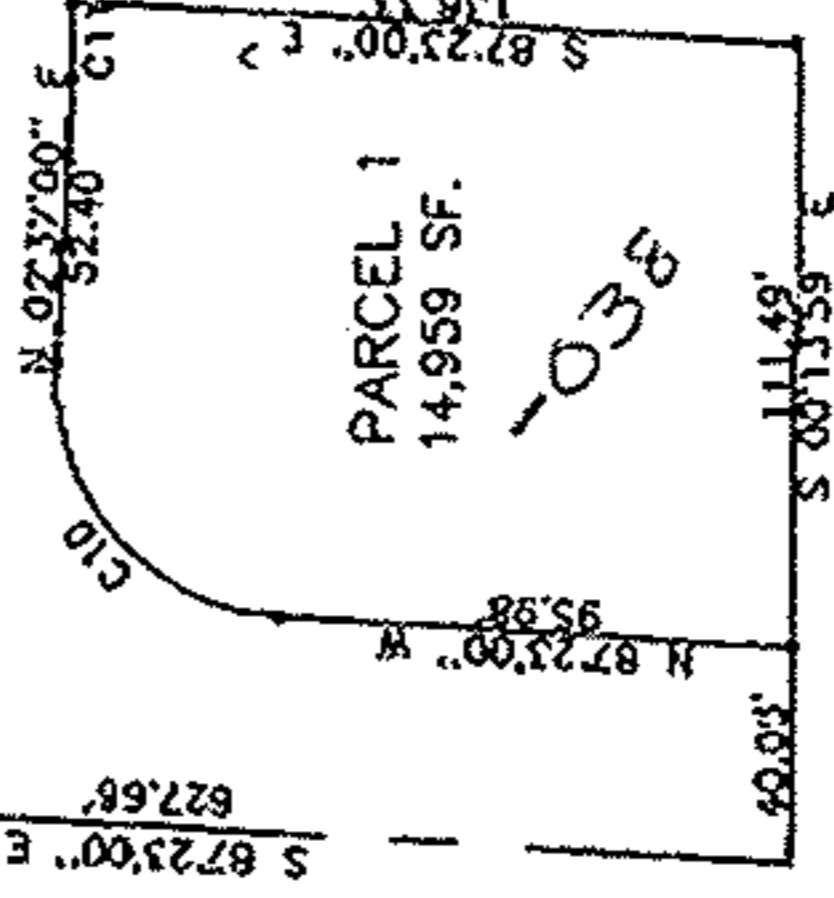
NUMBER	IC	CO	R	L	LC
C10	90°00'00"	N 42°23'00" W	45.00	70.68	63.64
C11	06°03'52"	N 01°01'59" W	130.00	13.99	13.98

- IRON PIN SET OR TO BE SET
- IRON PIN FOUND

APPROVED BY THE LORAIN CITY PLANNING COMMISSION..... NO PLAT REQUIRED



EHTESHAM M. SUHAIL



William 10-4-2000
SECRETARY LORAIN CITY PLANNING COMMISSION

APPROVED

AS TO DESCRIPTION ONLY

Date *September 20, 2000*
City of Lorain

per *Ehtesham M. Suhail*
Engineering Dept.

DRAWN BY: RN	DATE: SEP. 21, 2000
CHECKED BY: HS	DRAWING NO.: PLAT 1
JOB NO.: 99165	SHEET 1 OF 1

Suhail & Suhail, Inc.
 Consulting Engineers & Surveyors
 25000 Great Northern Corporate Center
 Suite 300
 North Olmsted, Ohio 44070
 (440) 734-1986 Fax: (440) 734-2940

3