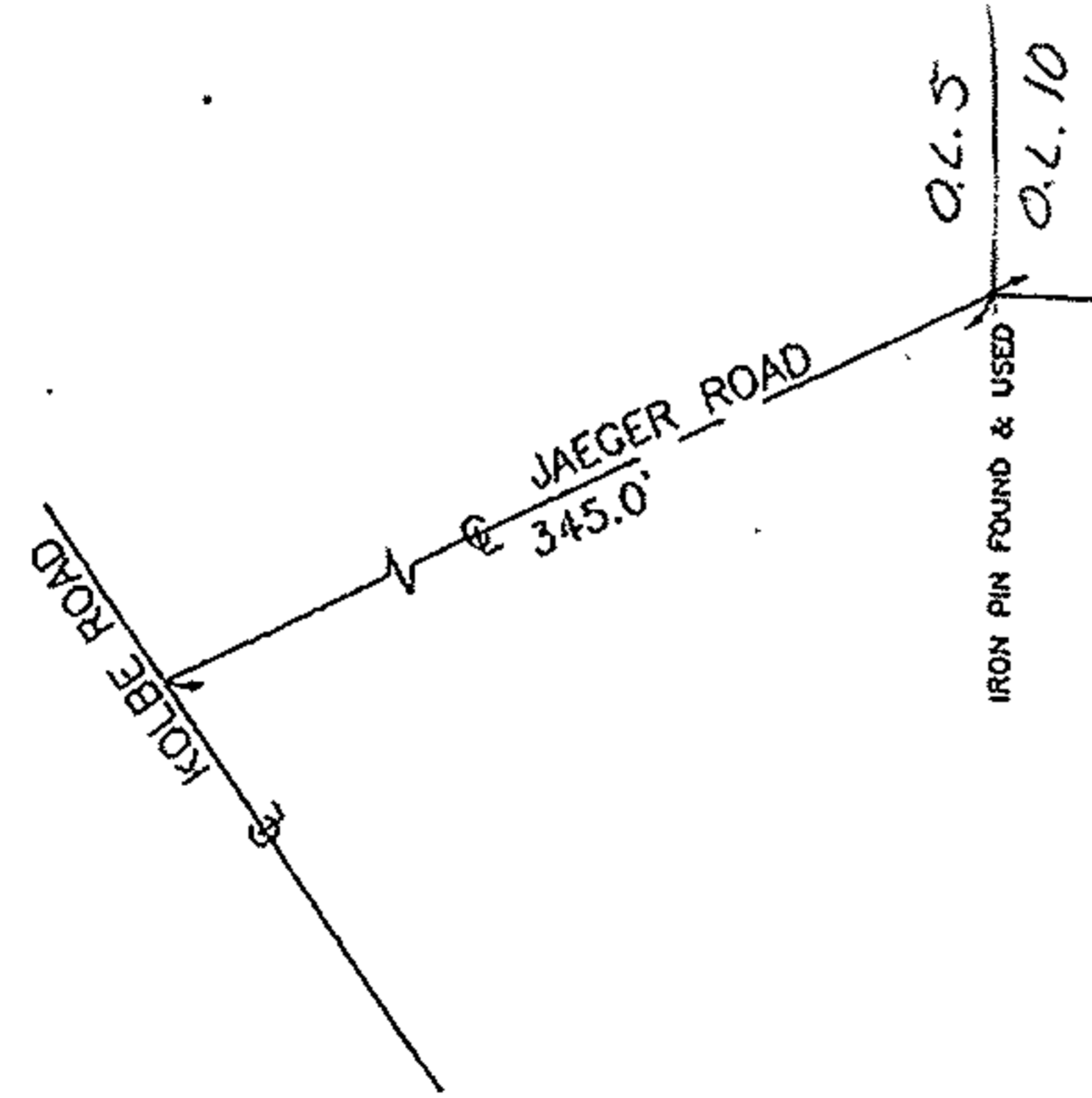


02-02-010-00-037

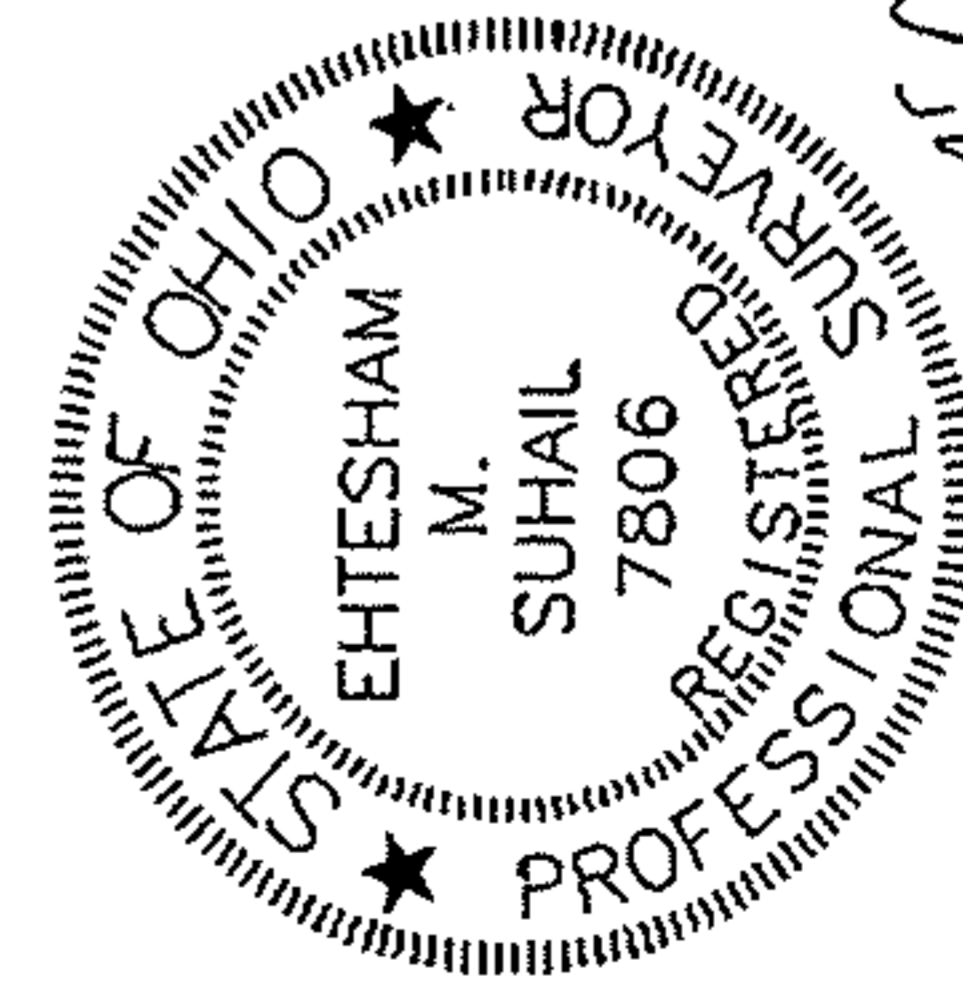
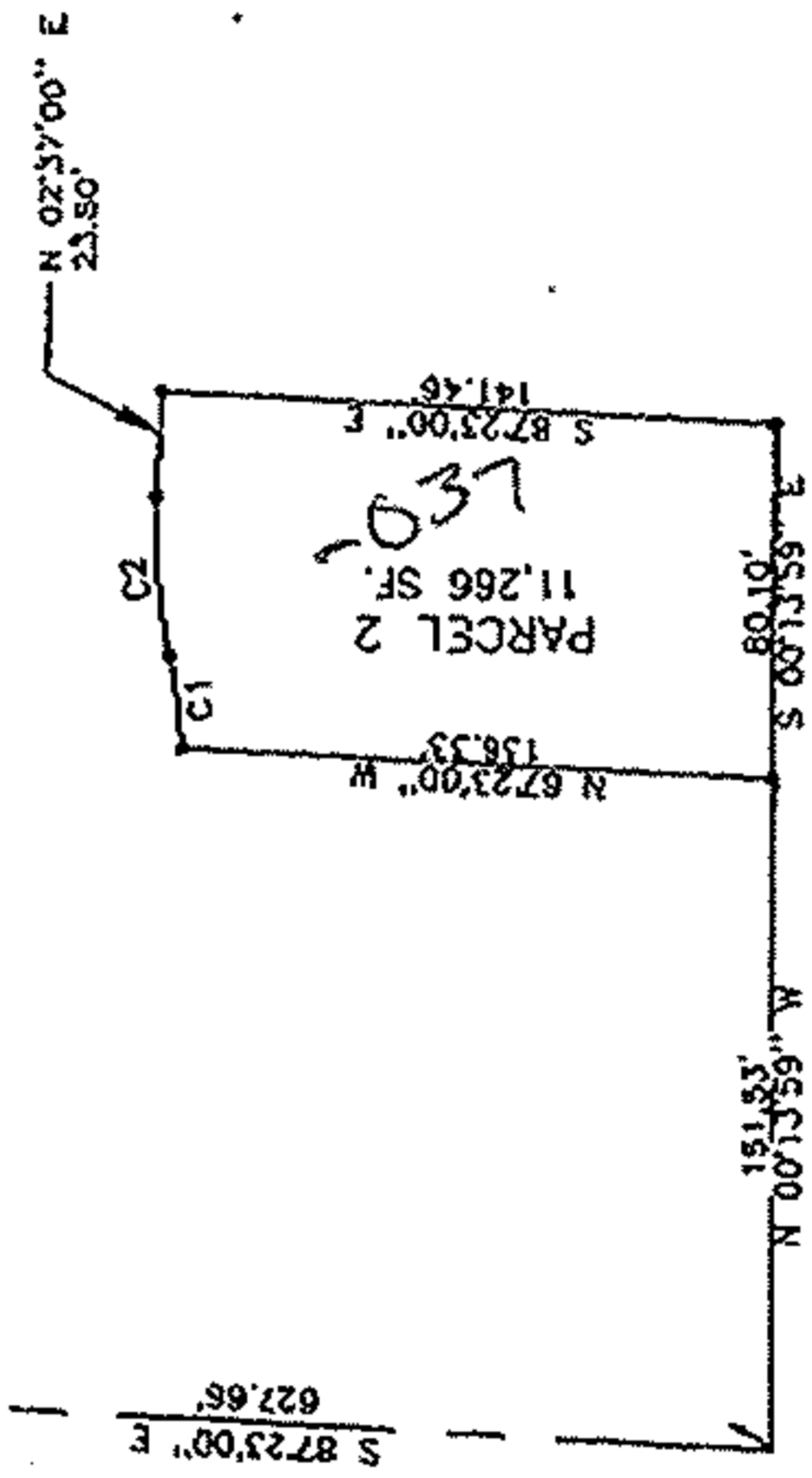


Scale 1" = 100'

- IRON PIN OR PIPE FOUND
- IRON PIN SET OR TO BE SET



NUMBER	ICD	R'	L'	LC'
C1	N 09°12'55"	W 130.00	20.91	20.09
C2	N 15°56'31"	W 130.00	36.18	38.07



**APPROVED**

AS TO DESCRIPTION ONLY

Date September 28, 2000

Per Ehtesham M. Suhail  
 City of Lorain  
 Engineering Dept.

EHTESHAM M. SUHAIL

APPROVED BY THE LORAIN CITY PLANNING COMMISSION  
 COMMISSION ..... NO PLAT REQUIRED

*William C. ...*  
 SECRETARY LORAIN CITY PLANNING COMMISSION

DRAWN BY: RN	DATE: SEP. 21, 2000
CHECKED BY: HS	DRAWING NO.: PLAT 2
JOB NO.: 99165	SHEET 1 OF 1

**Suhail & Suhail, Inc.**  
 Consulting Engineers & Surveyors

25000 Great Northern Corporate Center  
 Suite 300  
 North Olmsted, Ohio 44070  
 (440) 734-1986 Fax: (440) 734-2940

2