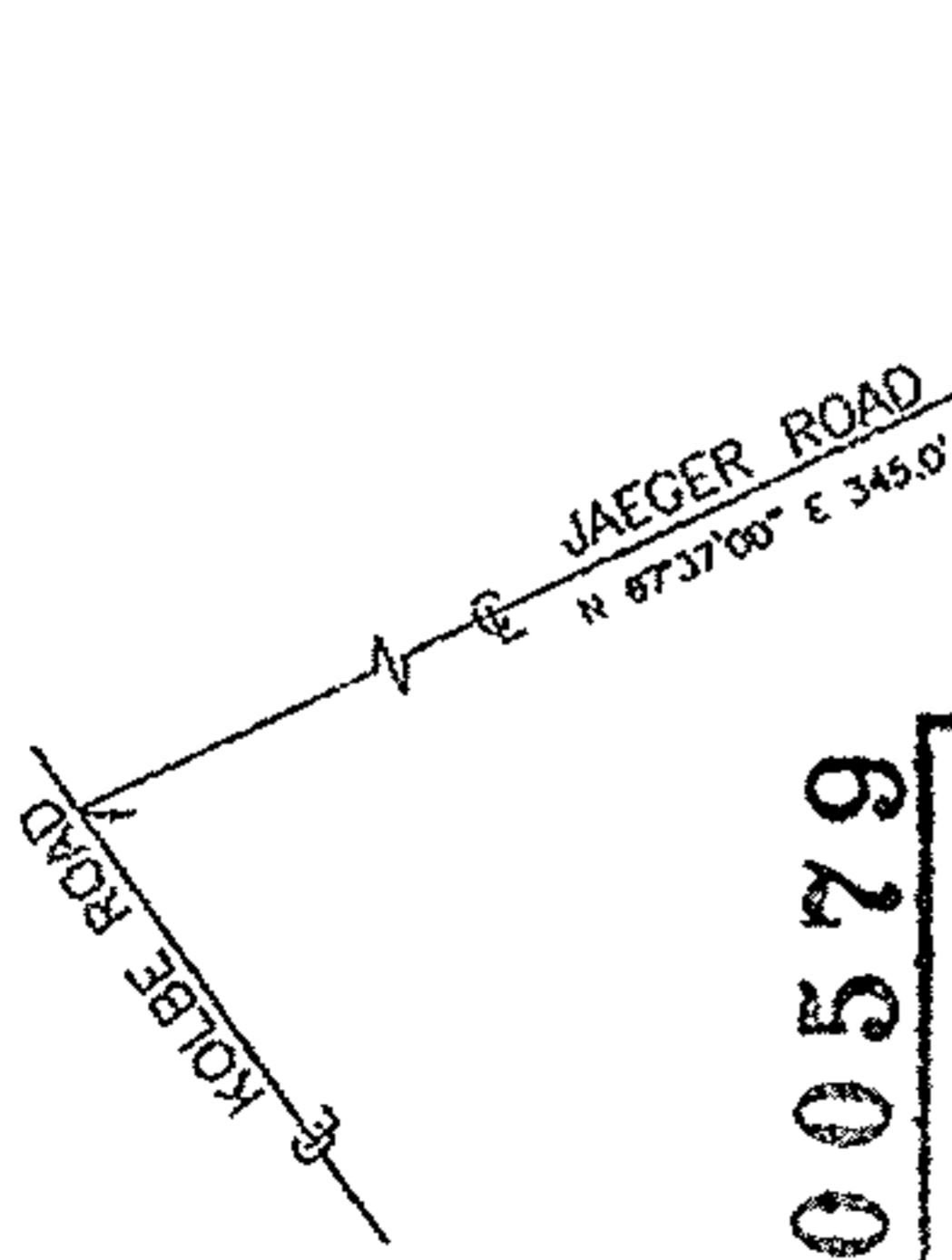


02-02-010-000-036-110-040



Scale 1" = 100'

#00579

APPROVED  
 LORAIN CO.  
 MAP DEPT.  
 DATE 10/12/00  
 BY 2-02-010-A  
 T. SPILLMAN  
 00579

- IRON PIN OR PIPE FOUND
- IRON PIN SET OR TO BE SET

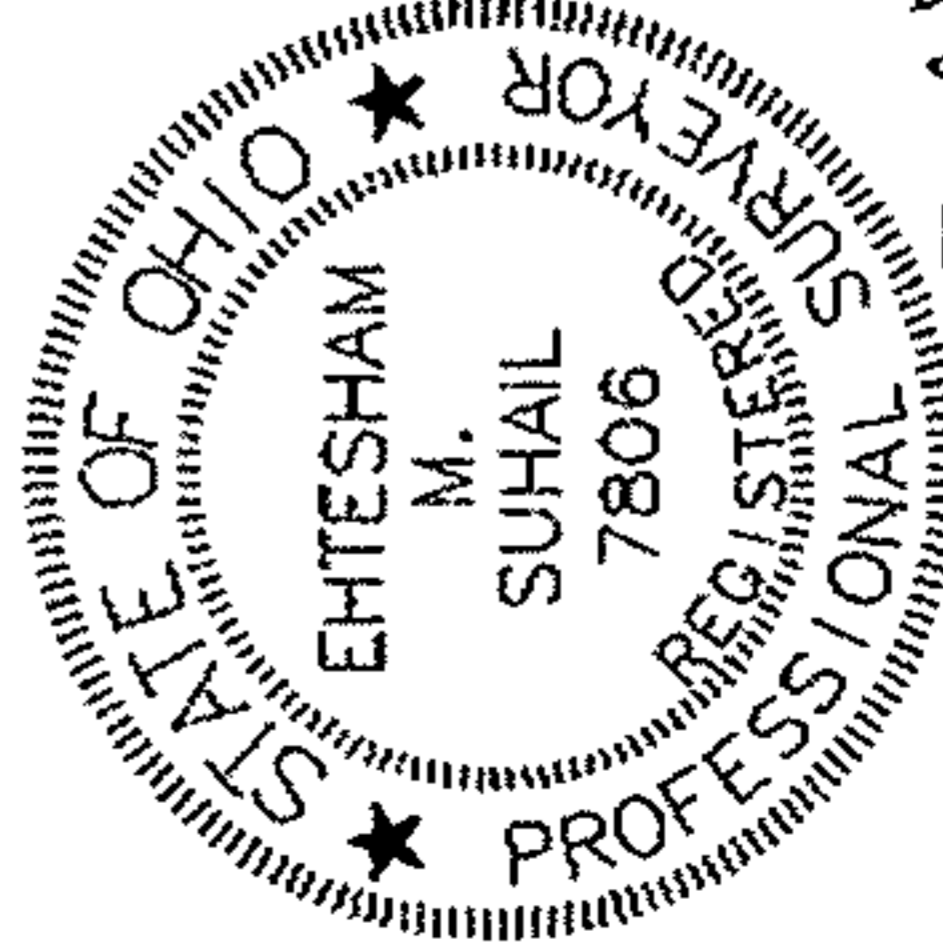
NUMBER	IS	CO	T	R	L	LC	
C3	90°00'00"	N 42°37'00"	W	45.00	45.00	70.69	63.64
C4	15°22'48"	N 05°38'27"	W	17.55	130.00	34.90	34.73
C5	15°56'51"	N 03°21'25"	W	18.21	130.00	36.18	35.07
C6	90°00'00"	S 47°37'00"	W	25.00	25.00	39.27	35.36
C7	90°00'00"	S 42°23'00"	E	25.00	125.00	39.27	35.36
C8	90°00'00"	S 47°37'00"	W	45.00	145.00	70.69	63.64

APPROVED

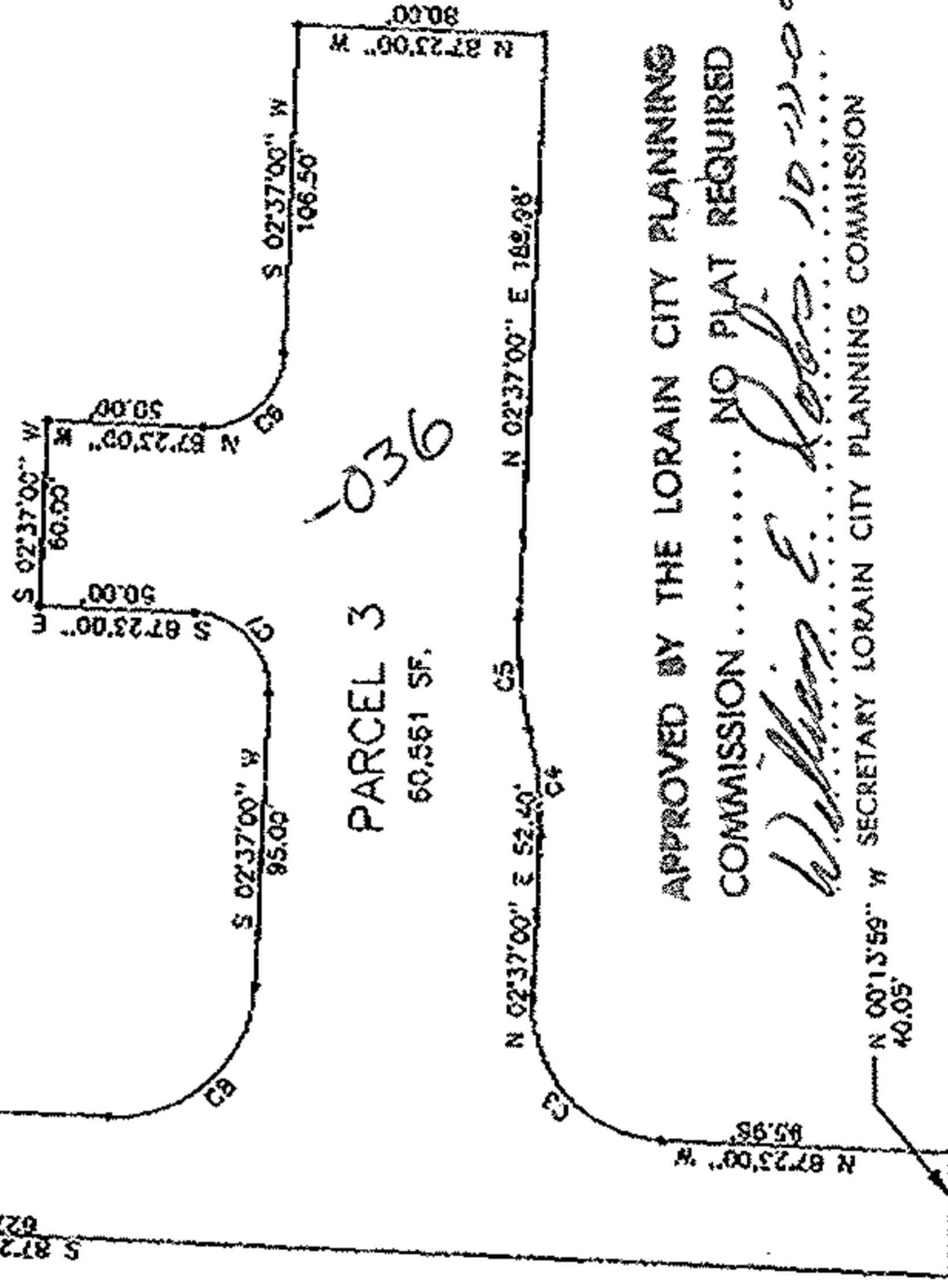
AS TO DESCRIPTION ONLY

Date October 10, 2000

Per *Ehtesham M. Suhail*  
 City of Lorain  
 Engineering Dept.



EHTESHAM M. SUHAIL



APPROVED BY THE LORAIN CITY PLANNING  
 COMMISSION..... NO PLAT REQUIRED

*William E. Robb*  
 SECRETARY LORAIN CITY PLANNING COMMISSION

DRAWN BY: RN	DATE: OCT. 05, 2000
CHECKED BY: HS	DRAWING NO.: PLAT 3
JOB NO.: 99165	SHEET 1 OF 1

**Suhail & Suhail, Inc.**  
 Consulting Engineers & Surveyors  
 25000 Great Northern Corporate Center  
 Suite 300  
 North Olmsted, Ohio 44070  
 (+40) 734-1986 Fax: (+40) 734-2940