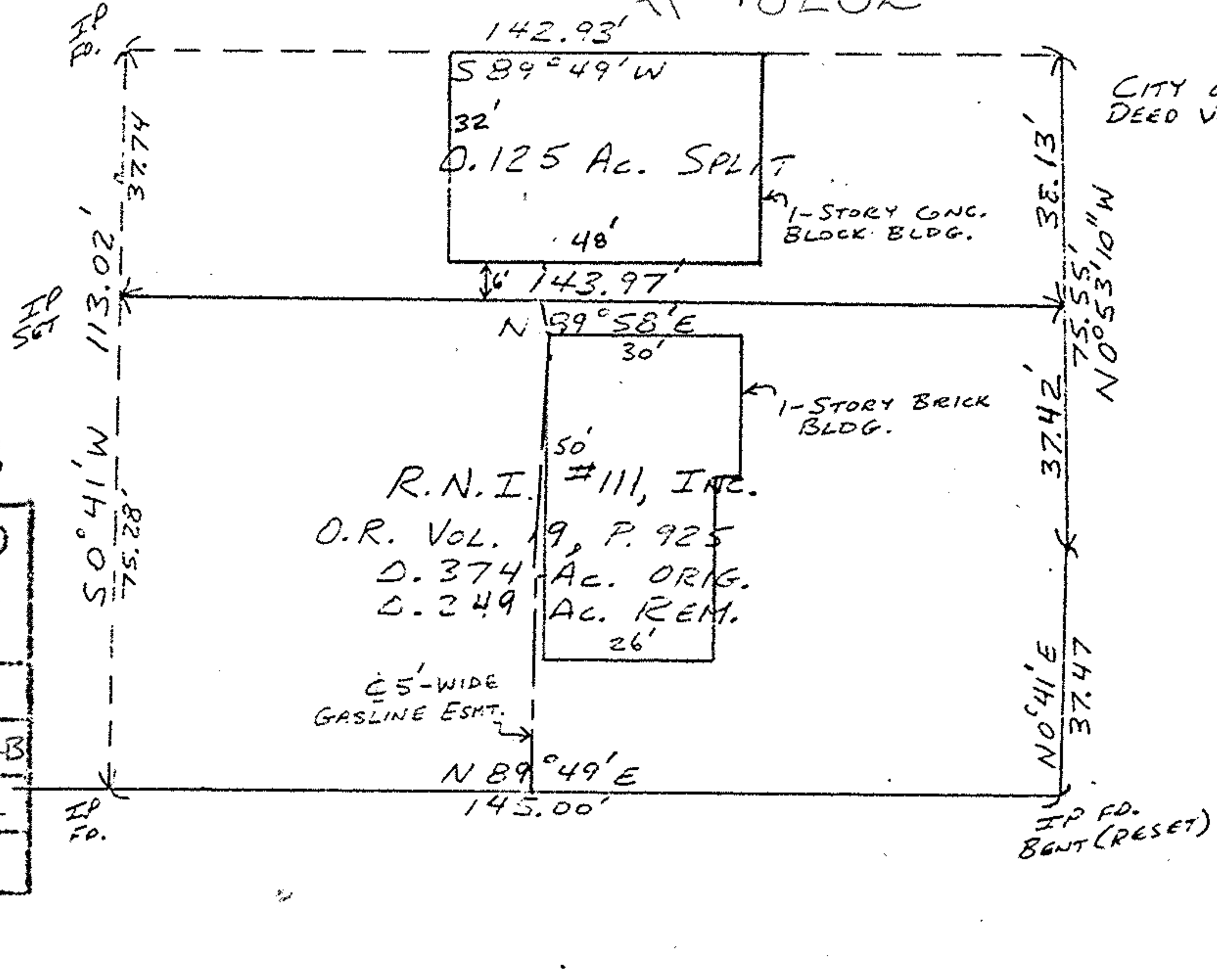
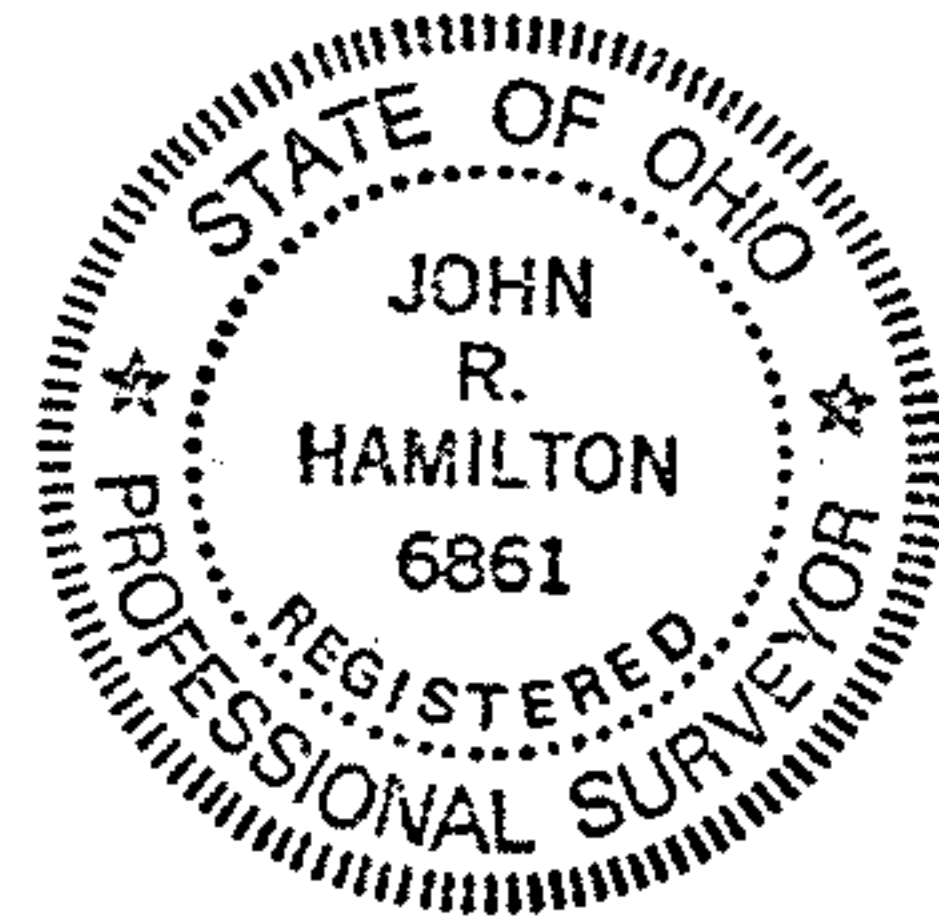


18252



CITY OF LORAIN R/W DEED VOL. 1063, P. 821

NORTH SCALE 1"=30'



#18252

APPROVED
LORAIN CO.
MAP DEPT.

DATE 12-16-88

PAGE 2-02-015-B

BY T. McMain

VOID AFTER 18252

W. 34th St. N89°49'E

02-02-015-105-047

PART OF BLOCK B OF WILLOW CREEK SUR. #2
PLAT VOL. 15, P. 5

MAP OF SURVEY OF 0.125 AC. SPLIT
FOR JOHN RITENAUER
C.L. 15-TRACT 2-BLACK RIVER TWP.
CITY OF LORAIN
9/88 SCALE 1"=30'
JOHN R. HAMILTON
REG. SURV. #6861
REV. 11/80 BLDG. APPROD