

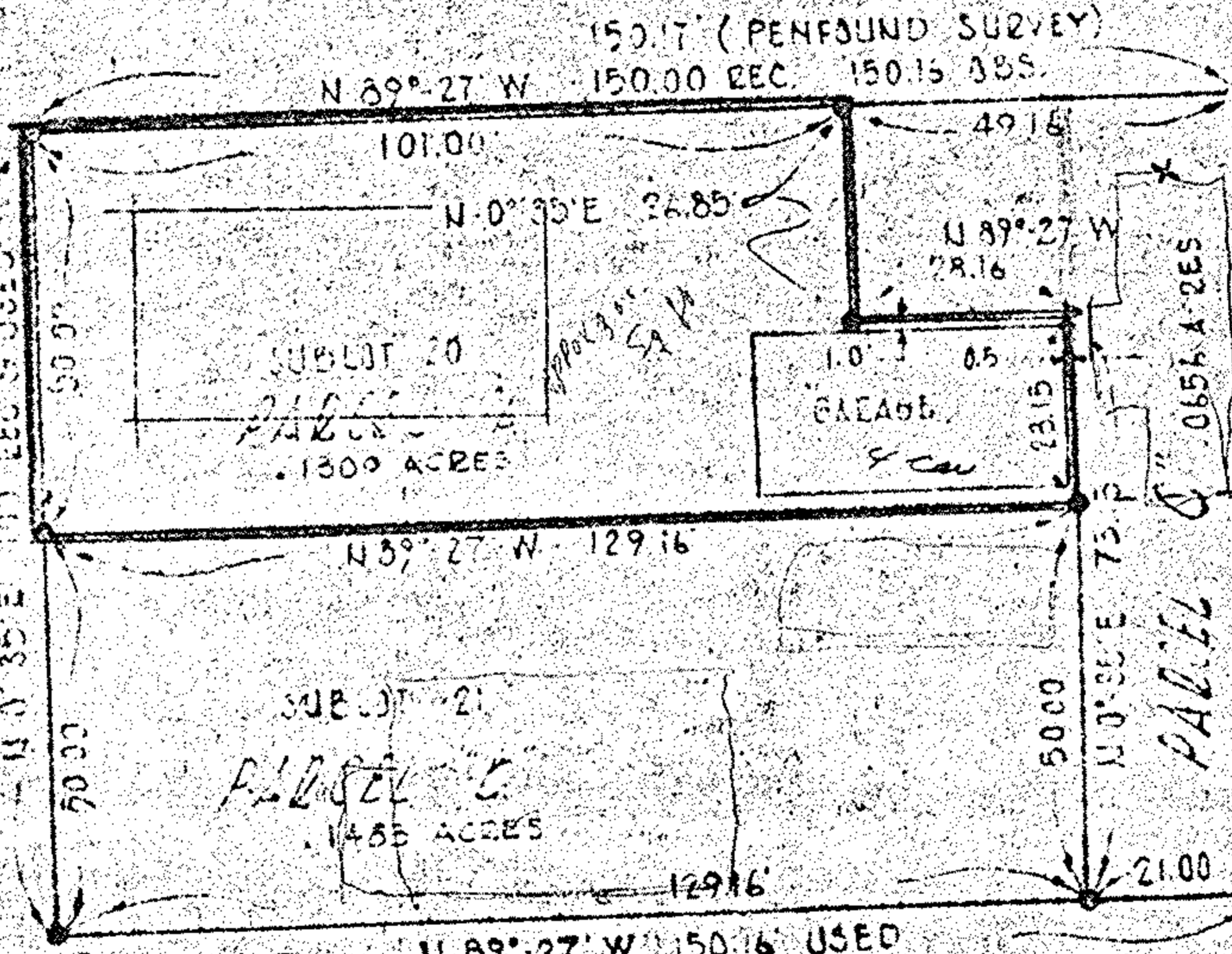
JAFFER, HURA & ASSOCIATES, INC.

ENGINEERS AND SURVEYORS

4370 OBERLIN AVE.
LORAIN, OHIO

2-02-025-B

WEST 13TH STREET



14TH ST.

○ = IRON PIN FD.
● = IRON PIN SET

DRILL HOLE IN CORNER
J.B.M. VIII P 29

ORIGINAL LOT	25 TR 2	DATE	11-15-71
TOWNSHIP	BLACK RIVER	SCALE	1" = 30'
CITY OF	LORAIN	FIELD BOOK	
COUNTY OF	LORAIN	DRAWN BY	JCH
STATE OF	OHIO	CHECKED BY	JFS