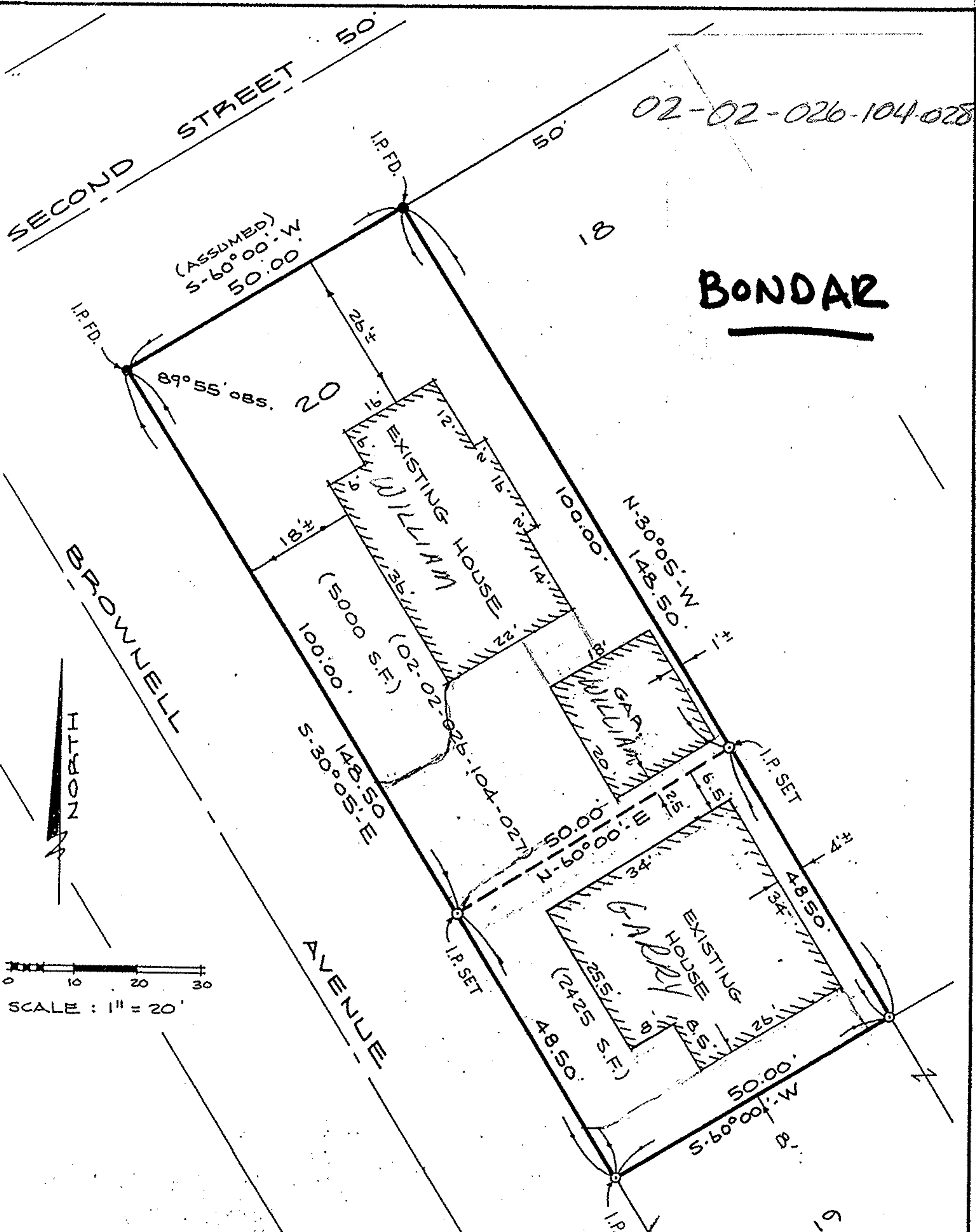


02-02-026-104-028



BONDAR

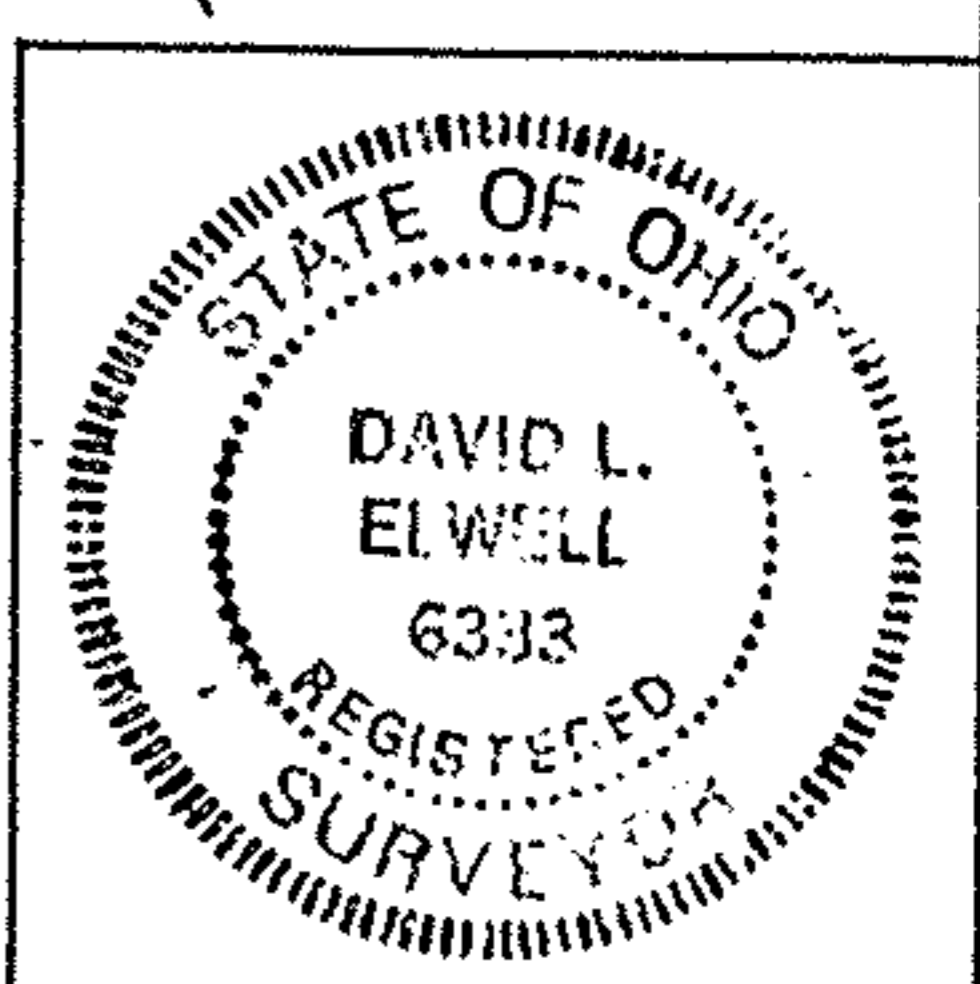
SURVEY MAP

SUBLOT 20 - BLOCK 2
 HOGAN'S FIRST ADDITION
 P.V. 3 P. 13
 CITY OF LORAIN
 COUNTY OF LORAIN
 STATE OF OHIO

PREPARED BY
KS ASSOCIATES INC.
 ENGINEERS SURVEYORS
 ELYRIA OHIO

David L. Elwell
 REG. SURV. No. 6333
 7-7-89
 Rev. 7-29-89 REV. 8-31-89

#18824
 APPROVED
 LORAIN CO.
 MAP DEPT.
 DATE 2-5-90
 PAGE 2-02-026 A
 BY CAROLYN FRANCIS
 VOID AFTER #18824



89-342