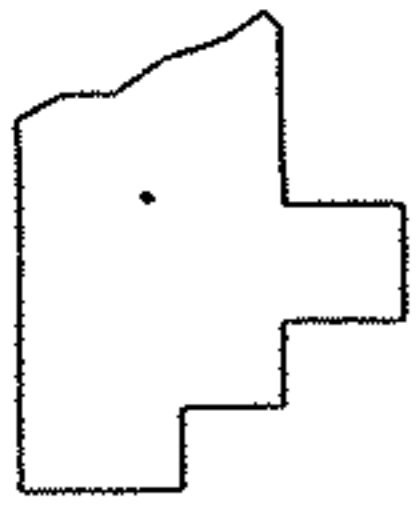
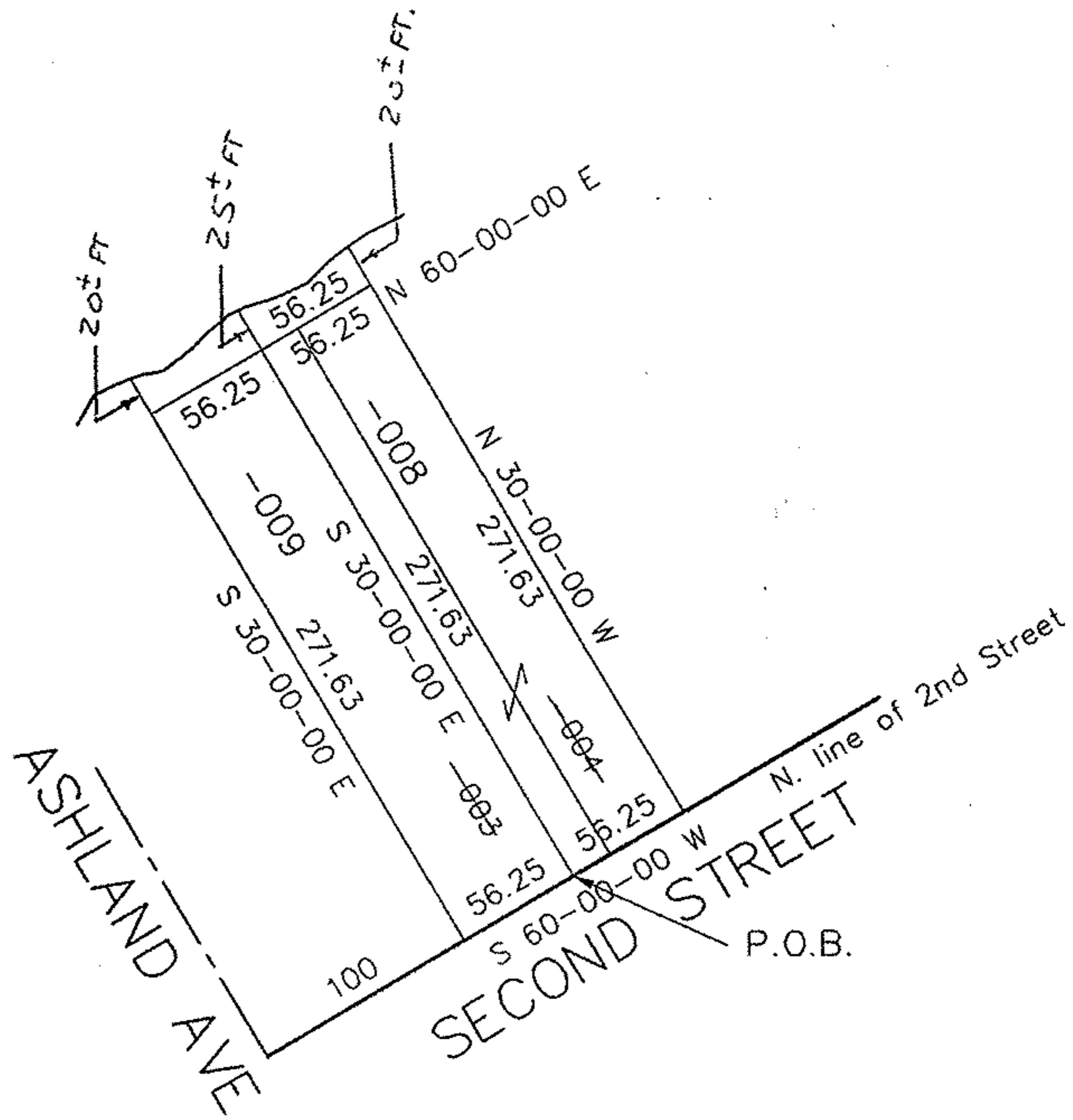
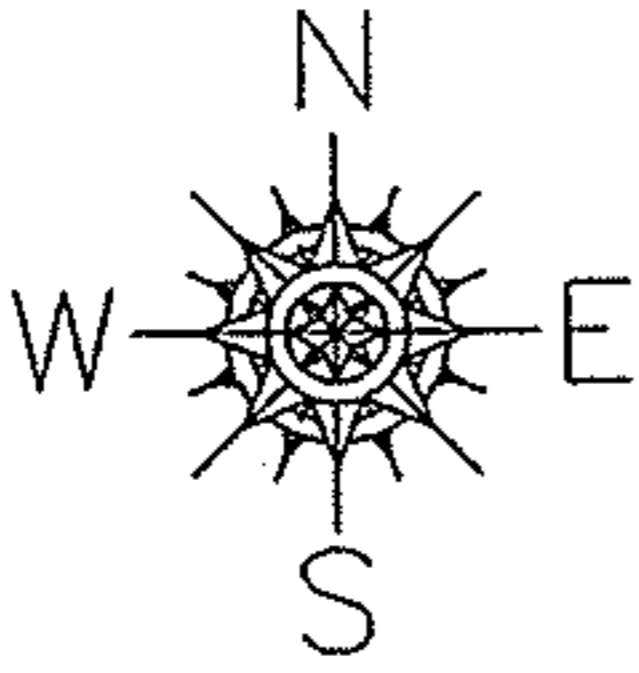


PARENT PARCEL: 02-02-027-102-003, 004

CHILD PARCEL: 02-02-027-102-008

STARTING POINT: 156.25 NLY OF E. line Ashland Ave. & N. line of 2nd Street

NO. 22126



SPLITS/DEEDS PROCESSED
 LORAIN COUNTY TAX MAP DEPARTMENT
 226 MIDDLE AVE. ELYRIA, OHIO

SURVEYED BY: Thomas A. Simon
 CLOSURE: 0.00 : 10,000
 MAP PAGE(S): 02-02-026-A
 APPROVED BY: kac DATE: 3-26-97
 SCALE: 1" = 100 PRIOR INSTRUMENT: _____