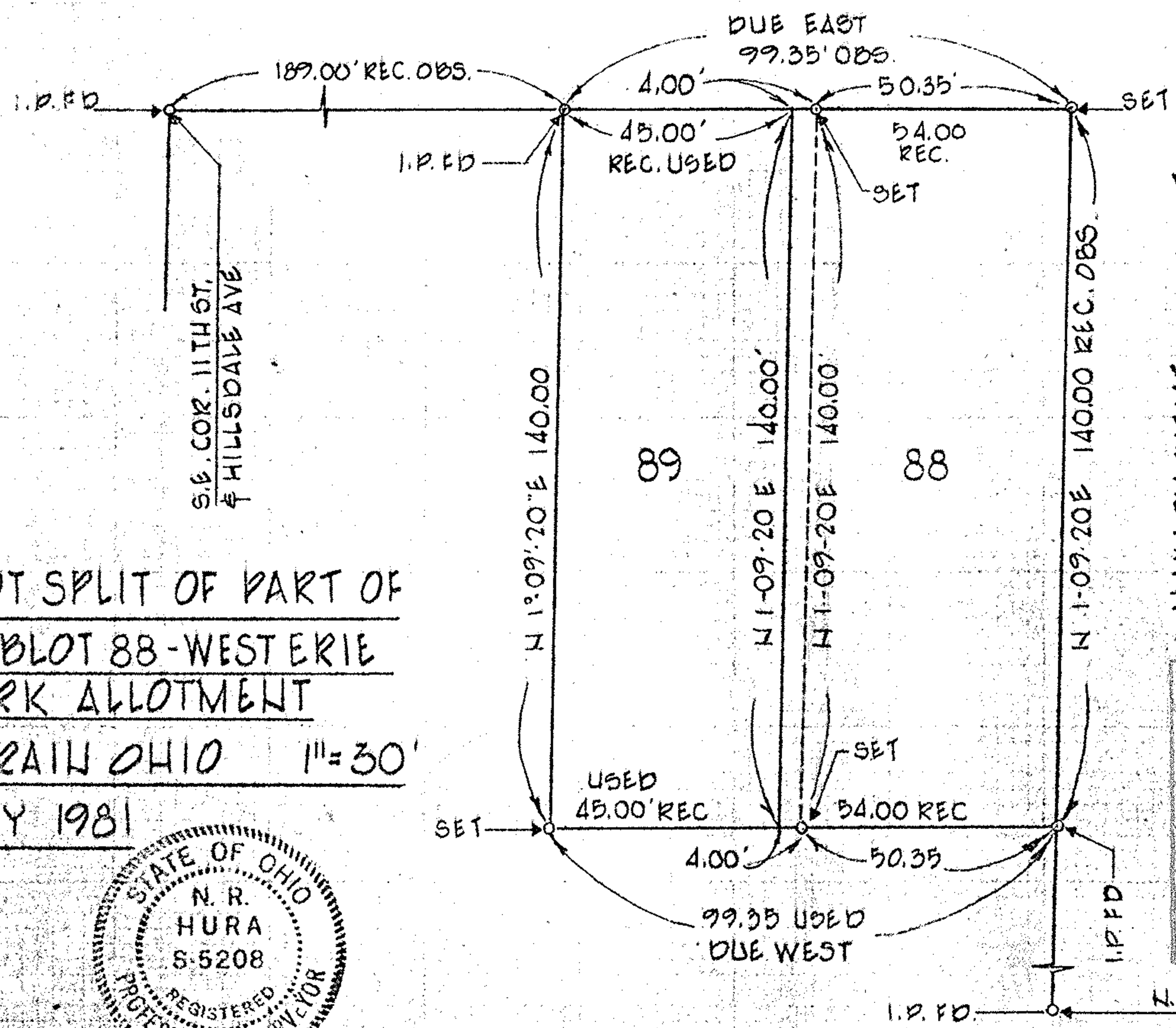


2-02-029

14220

020-1708-005
- 006

WEST 11TH STREET 66'



LOT SPLIT OF PART OF
SUBLOT 88 - WEST ERIE
PARK ALLOTMENT

LORAIN OHIO 1" = 30'

MAY 1981



HAWTHORNE AVENUE

14220

APPROVED	
LORAIN CO. MAP DEPT.	
DATE 6-1-81	
PAGE 2-02-029	
BY:	<i>J. Lambert</i>
VOID AFTER	14220

N.W. COR. 12TH ST.

