

# IKS ASSOC. Inc.

CONSULTING ENG. & SURVEYORS  
424 MIDDLE AVE. ELYRIA, OHIO

# SURVEY

Sublot(s) PART OF 186

Subd'n ALTERED PLAT OF HIGHLAND  
BLVD SUB. (P.V. 12 P. 11) - P.V. 13 P. 14

Township BLACK RIVER

Tract 1

Orig. Lot(s) 6

Sec. \_\_\_\_\_

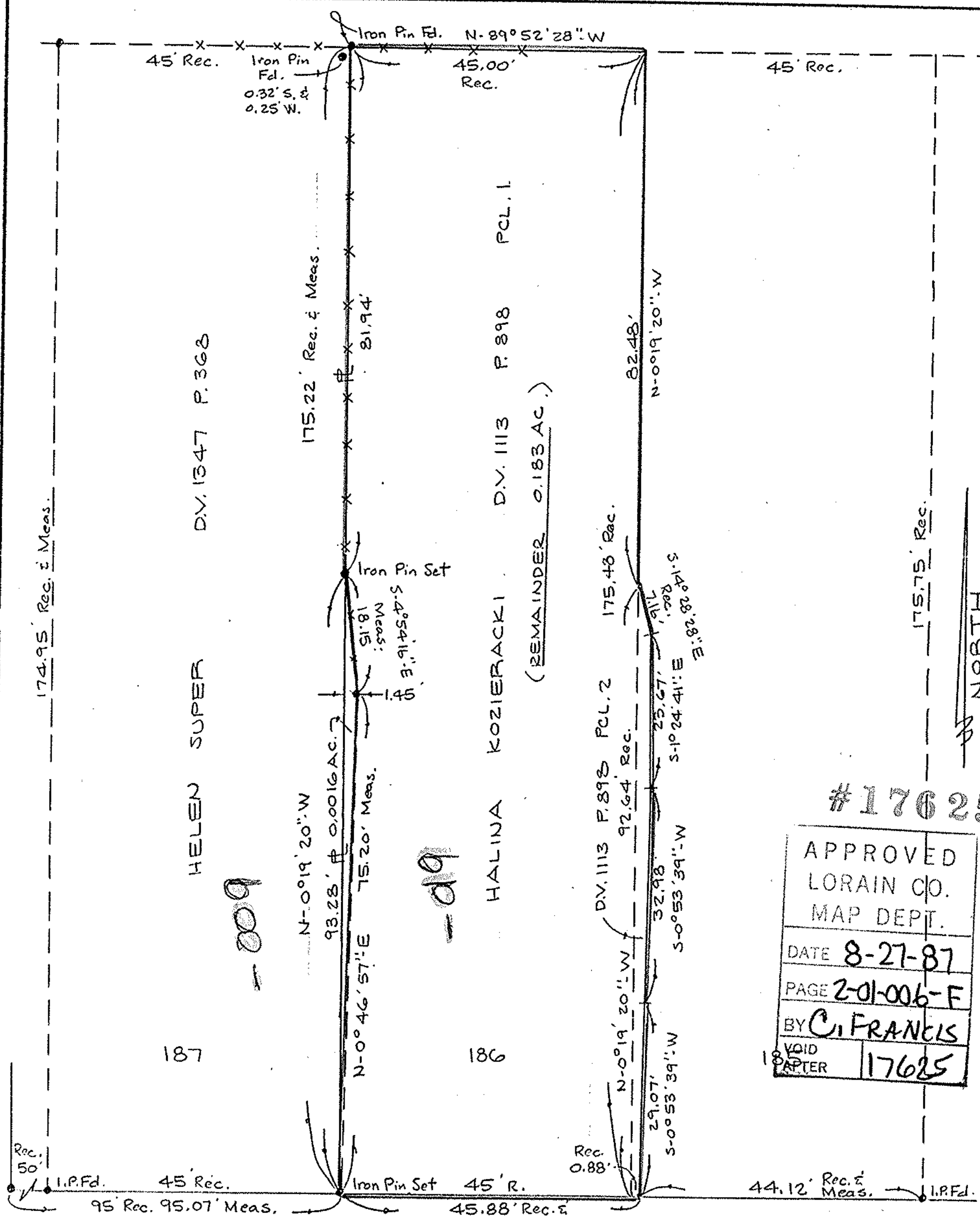
County of LORAIN

State of Ohio

Corporation CITY OF LORAIN

111422

110100-000-164-009019



#17625

APPROVED LORAIN CO. MAP DEPT.	
DATE	8-27-87
PAGE	2-01-006-F
BY	C. FRANKS
VOID AFTER	17625

**HIGHLAND  
APPROVED**  
AS TO DESCRIPTION ONLY.

Date 8-13-87  
City of Lorain  
Per Lowell H. Kressel  
Engineering Dept.

APPROVED BY THE LORAIN CITY PLANNING  
COMMISSION 8-13-87  
*[Signature]*  
SECRETARY LORAIN CITY PLANNING COMMISSION