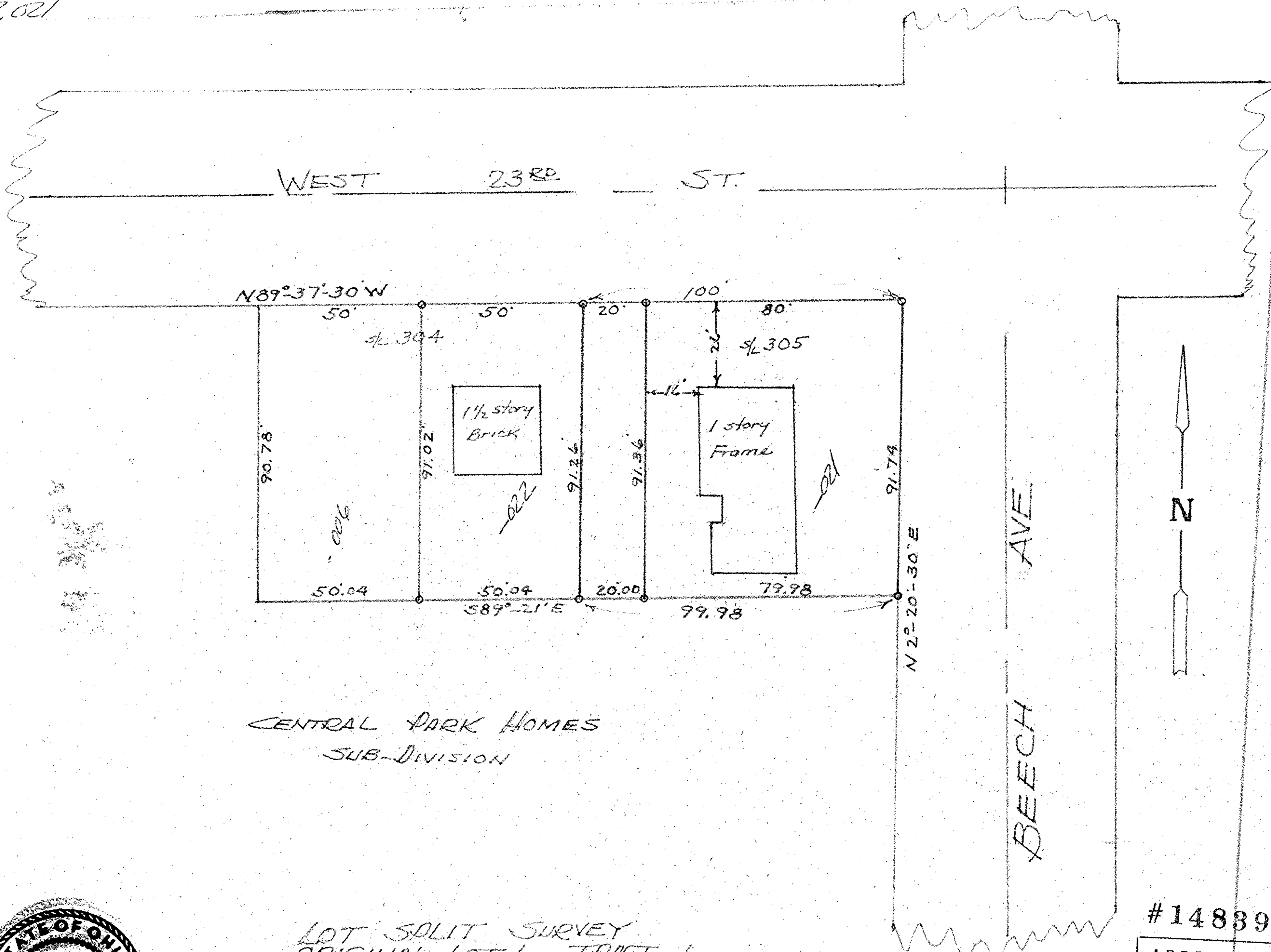


Parcel # 02-01-006-154-008-021
 Map page # 02-01-006-F



CENTRAL PARK HOMES
 SUB-DIVISION

LOT SPLIT SURVEY
 ORIGINAL LOT 6 = TRACT 1
 BLACK RIVER TOWNSHIP
 STANG'S 2ND SUB-DIVISION
 SUB LOT 305 P.P. 2-01-006-154-008
 SCALE 1"=30' 3 SEPT 1982



APPROVED BY THE LORAIN CITY PLANNING COMMISSION
 SECRETARY LORAIN CITY PLANNING COMMISSION
Robert Williams

APPROVED
 AS TO DESCRIPTION ONLY
 Date 29-Sept-1982
 City of Lorain
 Per Patrick M. Shannon
 Engineering Dept.

#14839

APPROVED LORAIN CO. MAP DEPT.	
DATE	
PAGE	
BY	
VOID AFTER	