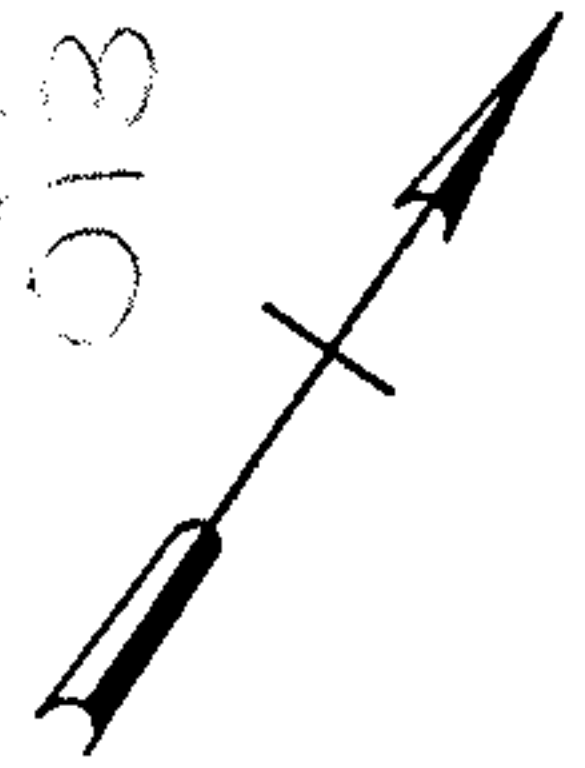


513



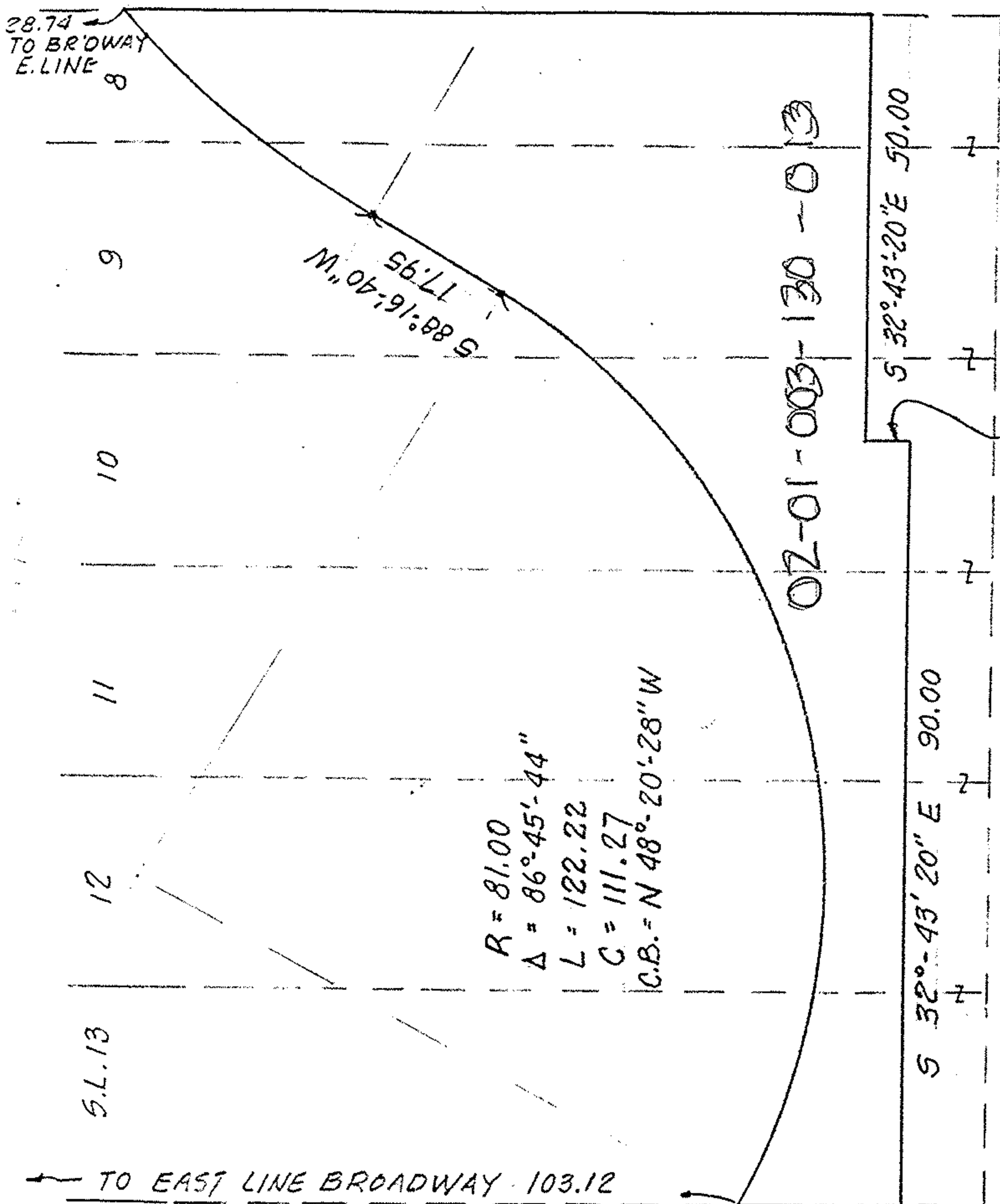
1" = 20'

R = 129
Δ = 16°-35'-48"
L = 37.37
C = 37.24
C.B. = N 83°-25'-26" W

800- ← → 600-

N 57°-16'-40" E 88.26

28.74
TO BR'DWAY
E. LINE



S 88°-16'-40" W
77.95

R = 81.00
Δ = 86°-45'-44"
L = 122.22
C = 111.27
C.B. = N 48°-20'-28" W

02-01-003-130-013

S 32°-43'-20" E 50.00

S 32°-43' 20" E 90.00

N 57°-16'-40" E 5.00

S.L. 13

12

11

10

9

TO EAST LINE BROADWAY 103.12

N. LINE 13TH ST.

S 57°-16'-40" W 19.08

13TH ST. 66'

PART of
SUBLOTS "8 thru 13 in BLOCK 22 of
SELAH CHAMBERLAIN TRUSTEES SUBDIVISION
PLAT VOL. 2 PAGE 11
PART of ORIG. BLACK RIVER TWP. LOT 3-TRACT 1
NOW in CITY of LORAIN , OHIO
PART of P.P. No. 02-01-003-130-008
TAX MAP PAGE 02-01-003-C

PREPARED FROM DESCRIPTION
FURNISHED BY HIGHWAY PLAN

THIS IS NOT A PLAT OF SURVEY:
FOR: ATTORNEY DAN COOK

K. E. MCCARTNEY & ASSOCIATES

APR. 27, 1988

#881988

CB-M/5C.